

# WALTHERS™

# FLYER

Your Number One Resource for Model Railroad Product Information

## NEWEST NAME TRAIN REVEALED

*Details on pages 14 & 15*

## MUST-HAVE SUPER CHIEF CAR

*All-New Regal Series 4-4-2 Sleeper*

## VERSATILE PROTO RS2s

*Coming Soon in HO and N*

ONLY IN  
THIS ISSUE  
*modeling*  
BACK TO SCHOOL SALE



**SEPTEMBER 2010**  
Sale Ends 10-31-2010

Find a Hobby Shop Near You! Visit [walthers.com](http://walthers.com) or call 1-800-487-2467

## WHAT'S INSIDE

## WELCOME



HO PRR Broadway Limited  
First Look! | pgs 14-15



HO Platinum Line™ 50' Double-Door Boxcar  
New Schemes & Numbers | pg 5



HO ACF 44-Seat Coach  
New Roadnumbers | pg 5

September marks the start of new things – a new school year, a new modeling season and more new Walthers™ products.

**NAME TRAIN AUTHORITY** – Don't miss out on our seventh complete name train, PRR's legendary Broadway Limited. Sneak a peek on pages 14-15.

**PROTO RS2** – Both HO and N Scale modelers will want to check out the new roadnames for these classic freight engines on page 4.

**SUPER CHIEF** – Our all-new “Regal” Series 4-4-2 Sleeper will come both a real-metal finish and a painted version as shown on page 5.

*Phil Walther*

## CONTENTS

Walthers™ New Flyer First Products	Pages 4 & 5
New Products from Walthers	Pages 6-9
New Arrivals at Walthers	Pages 10 & 11
Back to Modeling Sale	Pages 12 & 13
Walthers Name Trains	Pages 14-19
HO Scale	Pages 20-39, 42-54
Märklin & Trix Train Products	Page 55
Life-Like Racing Products	Pages 56 & 57
N Scale	Pages 58-64
Z, G & S Scale	Page 64
O, On30, HO <sub>n3</sub> & 1/50 Scale	Pages 65 & 66
All Scale	Pages 66-79



# Build Your Engine Servicing Facility Today!

## Cornerstone Series®

### Built-ups

### HO & N Motorized Turntables w/DCC

\$339.98 Each

933-2849 90' HO October Delivery

933-2850 130' HO November Delivery

933-2616 130' N November Delivery

- Now with DCC Programmable Address
- Fully Assembled & Ready To Use
- Easy DC or DCC Operation



## HO & N Scale Structures



### Modern Roundhouse

933-2900 HO Scale Kit Reg. Price: \$69.98 **Sale: \$53.98**

933-3260 N Scale Kit Price: \$64.98



### Modern Roundhouse 3 Add-On Stalls

933-2901 HO Scale Kit Price: \$54.98

933-3261 N Scale Kit Price: \$54.98



### Cinder Conveyor & Ash Pit

933-3181 HO Scale Kit Price: \$29.98

933-3816 N Scale Kit Price: \$24.98



### Sanding Tower & Drying House

933-3182 HO Scale Kit Reg. Price: \$31.98 **Sale: \$24.98**

933-3813 N Scale Kit Price: \$31.98



### HO Yard Office Built-up

933-2830 Assembled Price: \$34.98



### N Yard Office & Shed Kit

933-3822 Kit Price: \$51.98

Visit [walthers.com](http://walthers.com) to find more products for your Engine Servicing Facility.

# Flyer First

## Order Today!



### NEW SCHEMES & NUMBERS!

**NEW HO** PROTO 1000™ Alco RS-2  
January Delivery

\$99.98

- Five-Pole Skew-Wound Motor
- 14:1 Gear Ratio
- All-Wheel Drive & Electrical Pickup
- Dual-Machined Brass Flywheels
- Constant & Directional Lights
- Factory-Installed 9-Pin DCC Harness



920-35129 Green Bay & Western #302  
920-35130 Green Bay & Western #304



920-35131 NH #0505  
920-35132 NH #0512



920-35125 NYC #8214  
920-35126 NYC #8221



920-35127 PRR #4046  
920-35128 PRR #4048  
920-35133 Undecorated

### CLASSIC 50s FREIGHT POWER!

**NEW N** PROTO N™ Alco RS-2  
January Delivery

\$99.98

- New Schemes & Numbers
- All-Wheel Drive & Electrical Pickup
- Dual-Machined Brass Flywheels
- Heavy Die Cast Split-Frame Chassis
- Powerful Skew-Wound Motor
- DCC-Friendly Mechanism w/Clip-Fit Circuit Board



920-80080 Green Bay & Western #302  
920-80081 Green Bay & Western #304



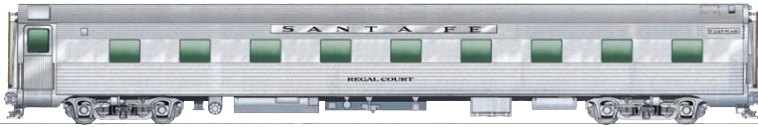
920-80082 NH #0505  
920-80083 NH #0512



920-80084 NYC #8214  
920-80085 NYC #8221



920-80086 PRR #4046  
920-80087 PRR #4048  
920-80088 Undecorated



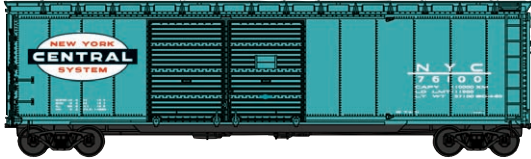
## THE CAR SUPER CHIEF FANS WANT!

**NEW HO** P-S "Regal" Series 4-4-2 Sleeper  
April 2011 Delivery

\$59.98

- Factory-Installed Grab Irons
- All-New Tooling

- Painted Plastic Car Matches Santa Fe Super Chief Train Introduced in 2004
  - Also used on PRR *Broadway Limited* in Transcontinental Service
  - Authentic Paint & Lettering
  - Proto MAX™ Metal Knuckle Couplers
  - RP-25 Metal Wheels
- 932-9009 ATSF



## FACTORY-INSTALLED GRAB IRONS!

**NEW HO** Platinum Line™  
50' Double-Door

**Boxcar**  
January 2011 Delivery  
\$29.98

- New Schemes & Roadnumbers
- Authentic 5/5 Dreadnaught End
- Correct Standard Car End Door
- Proto MAX Metal Knuckle Couplers
- RP-25 Metal Wheels



932-41651 ATSF #10300



932-41655 SOU #42000



932-41652 CB&Q #8224



932-41656 SP<sup>1</sup> #64999



932-41653 GTW #591263  
932-41654 NYC #76100



932-41657 UP<sup>1</sup> #161399

**Don't miss out on any of Walthers exciting new products. These Flyer Firsts are now available to order for the first time:**

**HO PRR Broadway Limited**  
Walthers Latest Name Train!  
See pages 14 & 15 for details.

**HO PROTO 1000™ Alco RS2**  
Green Bay & Western, NH, NYC,  
PRR, Undecorated

**N PROTO N™ Alco RS2**  
Green Bay & Western, NH, NYC,  
PRR, Undecorated

**HO P-S "Regal" Series**  
4-4-2 Sleeper  
ATSF Super Chief

**HO Platinum Line™**  
50' Double-Door Boxcar  
ATSF, CB&Q, GTW, NYC, SOU, SP<sup>1</sup>,  
UP<sup>1</sup>

**HO ACF 44-Seat Coach**  
GN, ATSF, CNW, Amtrak®, SP<sup>1</sup>, NP,  
PRR, DRGW<sup>1</sup>, C&O, Rock Island,  
UP<sup>1</sup>, NYC



## NEW ROADNUMBERS!

**NEW HO** ACF 44-Seat  
Coach  
January 2011 Delivery  
\$64.98

- Factory-Installed Grab Irons
- Prototypes in Santa Fe Service 1948-71
- Available for the First Time Without Antenna
- Proto MAX Metal Knuckle Couplers
- RP-25 Metal Wheels



932-6921 GN



932-6927 PRR



932-6922 ATSF



932-6928 DRGW<sup>1</sup>



932-6923 CNW



932-6929 C&O



932-6924 Amtrak®



932-6930 Rock Island



932-6925 SP<sup>1</sup>  
932-6926 NP



932-6931 UP<sup>1</sup>



932-6932 NYC

<sup>1</sup>Union Pacific licensed product

**Be the first to order -**

**they may be gone before you know it.**



**Reserve these new products at your hobby shop, or order before September 30, 2010.**

# NEW ARRIVALS

Items now in stock at participating hobby shops, or ready to ship from the Walthers warehouse. \

## NEW HO Platinum Line™ Sieco

**50' Pulpwood Flatcar**  
\$24.98 Each

- Now with **Factory-Installed Grab Irons**
- **New Roadnumbers**
- **Realistic Sloped Deck**
- **Great for 1960s & Later Layouts**
- **Proto MAX™ Metal Knuckle Couplers**
- **RP-25 Metal Wheels**
- **Matching Pulpwood Load #933-1130 (sold separately)**



932-41601 SOU #141070



932-41602 CSX #408299



932-41603 NS #111328  
932-41604 MEC #7534

## NEW HO Platinum Line™ Evans 4780 Cubic Foot Covered Hopper

\$29.98 Each

- Now with **Factory-Installed Grab Irons**
- **Etched-Metal Walkway Details**
- **Favorites for Hauling Grain & DDGs**
- **Perfect for Use with North American Ethanol Series Models**
- **Proto MAX Metal Knuckle Couplers**



932-41201 MKT/UP# #4102  
932-41202 MKT/UP# #4125  
932-41203 MKT/UP# #4147  
932-41204 SOO #125679  
932-41205 SOO #125716  
932-41206 SOO #125763



932-41207 CP #390260  
932-41208 CP #390262  
932-41209 CP #390266



932-41210 Dakota, Minnesota & Eastern #27087  
932-41211 Dakota, Minnesota & Eastern #27088  
932-41212 Dakota, Minnesota & Eastern #27095



932-41213 East Erie Commercial EEC #60102 (orange)  
932-41214 East Erie Commercial EEC #60201 (Oxide red)  
932-41215 East Erie Commercial EEC #60209 (Oxide red)



932-41216 Archer-Daniels-Midland UELX #30377  
932-41217 Archer-Daniels-Midland UELX #30402  
932-41218 Archer-Daniels-Midland UELX #65139

## NEW N Sieco 50' Platinum Pulpwood Flatcar

- \$14.98 Each
- **New Roadnames & Numbers**
  - **Realistic Sloped Deck**
  - **Great for 1960s & Later Layouts**
  - **Accumate® Knuckle Couplers**
  - **Matching Pulpwood Load #933-800 (sold separately)**



932-8908 SOU #141070  
932-8909 CSX #408299

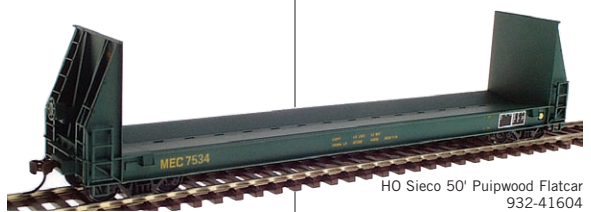


932-8910 NS #111328



932-8911 MEC #7534

*\*Union Pacific licensed product*



HO Sieco 50' Pulpwood Flatcar  
932-41604



N Sieco 50' Pulpwood Flatcar 932-8909



Evans 4780 Cubic Foot Covered Hopper  
933-1130



SceneMaster Botanicals

## NEW HO SceneMaster™ Botanicals™

\$6.99 Each

- **Amazing 3-D Realism!**
- **Laser-cut to Capture Ultra-Fine Details**
- **Printed on Tear-Resistant Paper**
- **Eight Plant Varieties**
- **Multiple Plant Bunches Per Pack**
- **Super-Easy Assembly**



433-1066 Cattails (16 Plants)



433-1067 Ferns (9 Plants)



433-1068 Hollyhocks (10 Plants)



433-1069 Lily Pads (2 Sheets)



433-1070 Dandelions (48 Plants)



433-1071 Sage (10 Plants)



433-1072 Virginia Creeper (12 Plants)



433-1073 Stinging Nettles (10 Plants)

# ADVANCE RESERVATIONS

Reserve now for future delivery  
(visit [walters.com](http://walters.com) for delivery updates).

**NEW HO M-O-W Pullman Heavyweight 36-Seat Diner**  
November Delivery  
\$59.98

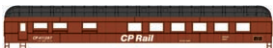
- Now with Factory-Installed Grab Irons
- Realistic M-O-W Scheme
- Perfect for Work Train Consists
- Interior Details
- Proto MAX™ Metal Knuckle Couplers



932-10170 ATSF #198629



932-10171 BN #968018



932-10172 CP #411297



932-10173 MOW #4001  
932-10174 PRR #492197



932-10175 UP# #906206

**NEW HO M-O-W ACF Heavyweight 70' Baggage Car**  
January 2011 Delivery  
\$59.98

- Now with Factory-Installed Grab Irons
- Realistic M-O-W Scheme
- Perfect for Work Train Consists
- Interior Details
- Proto MAX Metal Knuckle Couplers



932-10527 ATSF #190090



932-10528 BN #976184



932-10529 CP #404910

<sup>1</sup>Union Pacific licensed product



932-10530 MOW #2010



932-10531 PRR #492457  
932-10532 UP# #903659

**NEW HO N Freight Car Loads**

- September Delivery
- Prepainted
  - Easy Drop-In Fit

### HO Scale



933-1130 Pulpwood Load  
\$12.98

- Fits Sico Pulpwood Car (932-5780 series)



933-1131 Pulpwood Load  
\$12.98

- Fits Canadian Bulkhead Flatcar (932-40050 series)



933-1132 Scrap Load pkg(2)  
\$12.98

- Fits AAR Mill Gondola (932-41900 series)



933-1133 Rip Rap Load pkg(2)  
\$11.98

- Fits Difco® Dump Car (932-7900 series)

### N Scale



933-800 Pulpwood Load  
\$11.98

- Fits Sico Pulpwood Car (932-8900 series)



933-801 Aggregate Load pkg(2)  
\$9.98

- Fits Greenville 2-Bay Hopper (932-50100 series)



933-802 N Rip Rap Load pkg(2)  
\$9.98

- Fits Difco Dump Car (932-8600 series)



M-O-W Pullman-Standard Heavyweight  
36-Seat Diner 932-10174



M-O-W Pullman-Standard Heavyweight  
70' Baggage Car 932-10532



SW8/900 photo  
courtesy of Diesel Era magazine

**NEW HO PROTO 2000® EMD SW8/900**

March 2011 Delivery  
Sound & DCC \$239.98  
Standard DC \$159.98

- New Roadnames & Numbers
- Prototype-Specific Detailing
- 5-Pole Skew-Wound Motor
- Machined Brass Flywheels

### Canadian National



920-41480 #7158 w/Sound & DCC

920-41481 #7165 w/Sound & DCC

920-48480 #7158 Standard DC

920-48481 #7165 Standard DC

### Conrail



920-41482 #8608 w/Sound & DCC

920-41483 #8611 w/Sound & DCC

920-48482 #8608 Standard DC

920-48483 #8611 Standard DC

### Rock Island



920-41484 #816 w/Sound & DCC

920-41485 #821 w/Sound & DCC

920-48484 #816 Standard DC

920-48485 #821 Standard DC

### Lehigh Valley



920-41486 #128 w/Sound & DCC

920-41487 #250 w/Sound & DCC

920-48486 #128 Standard DC

920-48487 #250 Standard DC

# ADVANCE RESERVATIONS

Reserve now for future delivery  
(visit [walthers.com](http://walthers.com) for delivery updates).

**NEW HO** **Platinum Line™**  
Trinity 30,145-  
Gallon Tank Car  
September Delivery  
\$39.98 Each

- Now with **Factory-Installed Grab Irons**
- Etched Metal Walkway Details
- Used to Haul Ethanol Coast to Coast
- RP-25 Metal Wheels
- Proto MAX Metal™ Knuckle Couplers



932-41151 North American Ethanol #301002  
932-41152 North American Ethanol #301017  
932-41153 North American Ethanol #301035



932-41154 Global Ethanol TILX #192179  
932-41155 Global Ethanol TILX #192225  
932-41156 Global Ethanol TILX #192262



932-41157 Renewable Products Marketing Group NATX #302182  
932-41158 Renewable Products Marketing Group NATX #302245  
932-41159 Renewable Products Marketing Group NATX #302373  
932-41160 Abengoa Bioenergy GATX #203658  
932-41161 Abengoa Bioenergy GATX #203669  
932-41162 Abengoa Bioenergy GATX #203687



932-41163 Midwest Ethanol Transport MWTX #112616  
932-41164 Midwest Ethanol Transport MWTX #112704  
932-41165 Midwest Ethanol Transport MWTX #112747



932-41166 TILX #319527  
932-41167 TILX #319482  
932-41168 TILX #319540  
932-41150 Undecorated

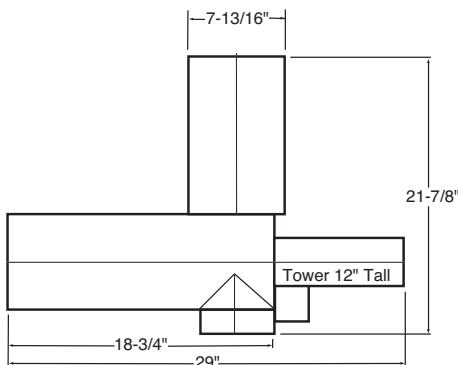


Los Angeles Union Passenger Terminal  
933-3390

**NEW HO** **Cornerstone®**  
Los Angeles Union  
Passenger Terminal - Kit  
November Delivery

- Perfect for UP *City & ATSF Super Chief* Trains!
- Based on LA Station Still in Use Today
- Sized to Fit Most Layouts
- Architectural-Grade Board & Plastic Construction
- Lasercut Precision Parts
- Ornate Details

933-3390 Los Angeles Union Passenger Terminal  
29 X 21-7/8 x 12" \$199.98



**NEW HO** **Cornerstone**  
Station  
Platforms - Kit  
November Delivery

- Durable Plastic Molded in Color
  - LED Lighting
  - Wiring Included
  - Parts For 4 Sections
- 933-3391 Station Platforms  
11-3/4 x 2/14 x 2/5/8" each  
section \$39.98



Station Platforms 933-3391



Trinity 30,145-Gallon Tank Car  
920-41160

# ADVANCE RESERVATIONS

Reserve now for future delivery  
(visit [walthers.com](http://walthers.com) for delivery updates).

- NEW HO Cornerstone® Main Street USA**  
Delivery Starting in December
- Easy-to-Build Plastic Kits Molded in Colors
  - Finely Detailed
  - Colorful Decals for Multiple Businesses
  - Designed to Work With Cornerstone Street System
  - Mix & Match or Use Separately
  - Fit Any Era

933-3460 Thompson Bros. Paint 3-1/2 x 6 x 7-1/4" \$39.98

933-3466 Argosy Booksellers 4-3/4 x 8-1/2 x 7-1/4" \$39.98

933-3462 Magnolia Hotel 3-1/2 x 6-1/8 x 6-3/4" \$34.98

933-3463 Cristie's Pet Supply 3-1/2 x 6-1/8 x 6-1/8" \$34.98

933-3468 Perfect Perk Café 3-1/8 x 5-1/2 x 4-1/2" \$34.98

933-3469 Village Pizza 3-1/8 x 5-1/2 x 4-3/4" \$34.98

933-3464 Simmons Five & Dime 7-1/8 x 5-1/2 x 3" \$29.98

933-3465 Glover Park Hardware 7-1/8 x 5-1/2 x 2-7/8" \$29.98



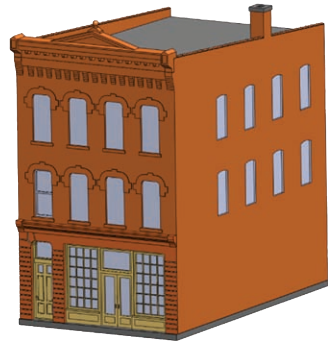
Thompson Bros. Paint 933-3460



Argosy Booksellers 933-3466



Magnolia Hotel 933-3462



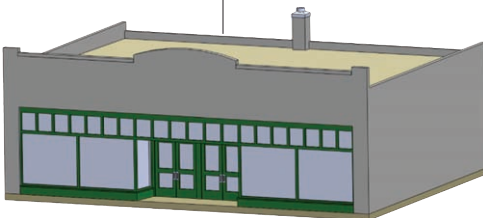
Cristie's Pet Supply 933-3463



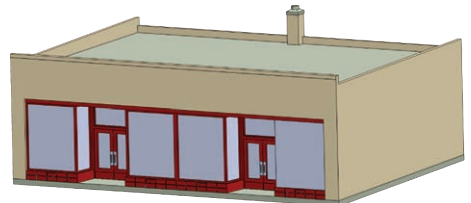
Perfect Perk Café 933-3468



Village Pizza 933-3469



Simmons Five & Dime 933-3464



Glover Park Hardware 933-3465

# NEW AT WALTHERS

**NEW**

**Rylies Animated Neon Billboard**  
Micro Structures 502-8881 Rylies Radio Repair  
Reg. Price: \$32.95  
Sale: **\$29.98**



**NEW N** **Sam's Roadhouse - Kit**  
Blair Line 184-1003 Sam's Roadhouse  
Reg. Price: \$32.95  
Sale: **\$29.98**



**NEW HO** **Miniature Golf Players**  
Merten 447-2462 Miniature Golf Players  
Reg. Price: \$21.99  
Sale: **\$19.98**



**NEW HO** **Wall Lamp**  
Viessmann 769-6074 Wall Lamp  
Reg. Price: \$13.99  
Sale: **\$11.98**



**NEW N** **Ma & Pa's Trailer Heaven**  
Woodland Scenics® AutoScenes™ 785-5341 Ma & Pa's Trailer Heaven  
Reg. Price: \$17.99  
Sale: **\$13.98**

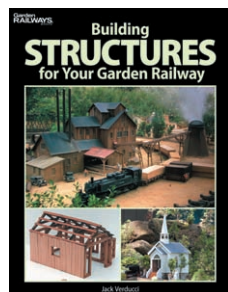


**NEW 1/50** **A-C HD21 Dozer**  
First Gear 283-503173 With Straight Blade & Drawbar  
Reg. Price: \$71.95  
Sale: **\$64.98**

**NEW** **Crest Smoke Fluid & Track Cleaner**  
Crest 227-29601 Smoke Fluid & Track Cleaner 4oz  
Reg. Price: \$5.00  
Sale: **\$3.98**



**NEW HO** **51' Heavyweight Flatcar w/2 20' Containers**  
Model Power 490-98305 TTX w/Sealand Containers  
490-98306 SOU w/ACL Containers  
490-98307 DRGW w/DRGW Containers  
Reg. Price: \$15.98  
Sale: **\$11.98**



**NEW** **Building Structures for Your Garden Railway**  
Kalmbach 400-12457 Building Structures for Your Garden Railway  
Reg. Price: \$21.95  
Sale: **\$19.98**



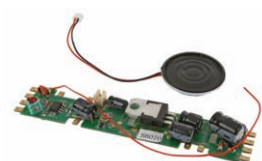
**NEW HO** **1936 Ford Fordor Sedan**  
Classic Metal Works Mini Metals 221-30260 Light Fast Maroon 221-30261 Tacoma Yellow  
Reg. Price: \$13.00  
Sale: **\$9.98**



**NEW HO** **H-4 2-6-6-2 Articulated w/Vanderbilt VC12 Tender**  
Bachmann Spectrum®  
**With DCC**  
160-82623 C&O #1397  
160-82624 C&O #1436  
160-82625 C&O #1439  
160-82621 Painted, Unlettered  
Reg. Price: \$375.00  
Sale: **\$259.98**  
**With DCC & Sound**  
160-84812 C&O #1343  
160-84813 C&O #1388  
160-84814 C&O #1432  
160-84815 C&O #1431  
160-84811 Painted, Unlettered  
Reg. Price: \$500.00  
Sale: **\$349.98**



**NEW HO** **Kiosk - Kit**  
Busch 189-1494 Kiosk  
Reg. Price: \$21.99  
Sale: **\$17.98**



**NEW HO** **DCC Sound & Control Decoder**  
MRC 500-1825 Fits Athearn SD45 for DC & DCC  
Reg. Price: \$89.98  
Sale: **\$69.98**



**NEW Z** **Pier & Building Kit**  
Micro Trains Line 489-79990929 Pier & Building Kit  
Reg. Price: \$44.95  
Sale: **\$39.98**



**NEW HO** **34' 14-Pipe Stack Load**  
JWD 372-11419 US Steel (black) 372-11420 US Steel (rusty black)  
Reg. Price: \$21.98  
Sale: **\$19.98**



**NEW** **UltraTech™ Technician's Mini-Plier Set**  
General Hardware 285-938 Technician's Mini-Plier Set  
Reg. Price: \$40.29  
Sale: **\$35.98**



**NEW G** **Livestock Car**  
LGB 426-45683 Colorado & Southern #7048 426-48680 SP  
Price: **\$149.98**



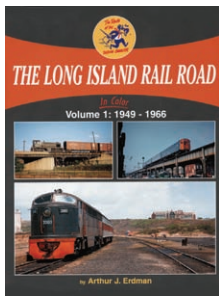
**NEW HO** **Shop Interior Equipment**  
Faller 272-180604 Shop Interior Equipment  
Reg. Price: \$14.99  
Sale: **\$12.98**



**NEW N** **GG-1**  
Kato 381-1372011 PRR #4889 381-1372012 PRR #4929  
Reg. Price: \$139.00  
Sale: **\$109.98**



**NEW HO** **Home Sweet Home - Assembled**  
Woodland Scenics Built-&-Ready® Landmark Structures™ 785-5036 Home Sweet Home  
Reg. Price: \$74.99  
Sale: **\$59.98**



**NEW** **The Long Island Rail Road in Color**  
Morning Sun  
484-1374 Vol. 1: 1949-1966  
Reg. Price: \$59.95  
Sale: **\$53.98**



**NEW** **N Split Level House - Assembled**  
Imx Perma-Scene™  
353-6344 Split Level House  
Reg. Price: \$15.00  
Sale: **\$12.98**



**NEW** **N EMD F3A**  
Kato  
381-1761204 WP #801A  
381-1761311 CB&Q #9962A  
381-1761312 CB&Q #9962C  
Reg. Price: \$135.98  
Sale: **\$69.98**



**NEW** **HO Velvet Freeze Grill - Kit**  
American Model Builders  
152-724 Velvet Freeze Grill  
Reg. Price: \$44.95  
Sale: **\$39.98**



**NEW** **Z PS2-CD Covered Hopper 4-Pack**  
American Z Line  
163-909171 NS #255538,  
255542, 255547 & 255561  
Price: **\$125.00**



**NEW** **HO Canoeists & Kayakers**  
Merten  
447-2500 Canoeists & Kayakers  
Reg. Price: \$10.99  
Sale: **\$9.98**



**NEW** **HO Spherical Water Tower - Kit**  
Railtown  
632-2906 Yellow  
w/Smiley Face  
Reg. Price: \$15.99  
Sale: **\$13.98**



**NEW** **Sun Kissed Tree**  
Woodland Scenics®  
Woodland Classics®  
785-3510 4 to 5"  
10.1 to 12.7cm  
Reg. Price: \$11.99  
Sale: **\$9.98**



**NEW** **ThrottlePack®**  
MRC  
500-1301 ThrottlePack  
Reg. Price: \$135.98  
Sale: **\$99.98**



**NEW** **HO Water Lilies**  
Noch  
528-14140 Water Lilies pkg(18)  
Reg. Price: \$9.99 Sale: **\$7.98**



**NEW** **HO 40' Trailmobile Flatbed**  
Lonestar  
437-5028 Construction Yellow  
Reg. Price: \$21.95  
Sale: **\$19.98**



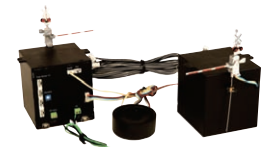
**NEW** **G Maintenance Car**  
LGB  
426-31553 Rhaetian Railways  
#X9079  
Price: **\$289.98**



**NEW** **G Forney Steam Loco**  
LGB  
426-25253 DRGW #252  
Price: **\$539.98**



**NEW** **Z ACF 3-Bay Hopper 4-Pack**  
American Z Line  
163-903012 UP Set #2 (UP Shield) #14068, 14079, 14085 & 14120  
163-903013 UP Set #1 (We Will Deliver)  
163-903021 BN Set #1 (BN Green) #481628, 481641, 481649 & 481689  
163-903022 BN Set #2 (BN Green) #458397, 458429, 481691 & 481700  
Price: **\$127.00**



**NEW** **HO Operating Crossing Gate**  
MTH  
507-8010001 With Sound & Flashing LEDs  
Price: **\$179.95**



**NEW** **HO Car Wash**  
Noch  
528-16524 Car Wash  
Reg. Price: \$31.99  
Sale: **\$26.98**



**NEW** **HO Raised Lookout - Kit**  
Busch  
189-1496 Raised Lookout  
Reg. Price: \$21.99  
Sale: **\$17.98**



**NEW** **N Family Fishing**  
Noch  
528-37802 Family Fishing  
Reg. Price: \$25.99  
Sale: **\$21.98**



**NEW** **HO Audi Set**  
Busch  
189-1606 A6, A4, A4 Avant pkg(3)  
Reg. Price: \$21.99  
Sale: **\$17.98**



**NEW** **HO ALCO RS-2**  
Model Power  
490-96845 CR  
Reg. Price: \$45.98  
Sale: **\$39.98**

All products featured in this catalog were in stock at press time. Because of increased demand for sale-priced items and limited quantities available, some may be out of stock following the printing of this catalog. You can find out if any item is available, or locate dealers who have recently ordered out of stock items by visiting [walthers.com](http://walthers.com). We reserve the right to correct errors, change prices and modify designs without notice and without obligation to previous purchasers. All rights reserved.

Prices and delivery dates shown were accurate at press time, for updates visit [walthers.com](http://walthers.com).

©2010 Wm. K. Walthers, Inc. All prices are listed in U.S. dollars. Prices subject to change without notice.

Select products are not shippable to California. CSX proprietary marks used by permission of CSX Transportation, Inc.

Accumate® couplers are made under license from Accurail, Inc.

Products bearing American Refrigerator Transit Company, ART, Chicago & North Western Railway, Chicago & North Western System, Chicago & North Western, CNW, C&NW, Denver & Rio Grande Western, DRGW, D&RG, D&RGW, Rio Grande, Katy Railroad, The Katy, Missouri-Kansas-Texas, MKT, M-K-T, Missouri Pacific Lines, Missouri Pacific, Mo-Pac, MP, Pacific Fruit Express Company, Pacific Fruit Express, PFE, Southern Pacific Rail Corporation, Southern Pacific Lines, Southern Pacific, SP, St. Louis Southwestern, SSW, Cotton Belt, Cotton Belt Route, Texas & Pacific, T&P, TP, Union Pacific Railroad Company, Union Pacific Railroad, Union Pacific, UP, Union Pacific Fruit Express, UPFE, Western Pacific & WP marks are made under trademark license from Union Pacific Railroad Company.

# Modeling BACK TO SCHOOL SALE

As the summer winds down, it's time to get back to your workbench and have some modeling fun. These products are just a sampling of what can be found to help get your projects back on track. More great items can be seen at [www.walthers.com/back2modeling](http://www.walthers.com/back2modeling).



**HO All-Purpose Maintenance Kit**  
Life-Like from Walthers™  
433-1418 All-Purpose Maintenance Kit  
Reg. Price: \$23.98  
Sale: \$12.98



**HO Track Cleaning Tank Car**  
Bachmann  
160-16301 MOW  
Reg. Price: \$37.00  
Sale: \$25.98



**The Chopper II**  
Northwest Short Line  
53-694 The Chopper II  
Reg. Price: \$44.95  
Sale: \$39.98

**Track Cutter**  
Xuron  
791-90028 Track Cutter  
Reg. Price: \$15.99  
Sale: \$12.98



For your back to modeling headquarters, visit [www.walthers.com/back2modeling](http://www.walthers.com/back2modeling)



**HobbyCal Inkjet/Bubble Jet Custom Decal Paper**  
Evans Designs. 8-1/2 x 11"  
266-P7 White pkg(5)  
Reg. Price: \$15.00  
Sale: \$12.98



**HO Deluxe Under Table Switch Machine**  
Atlas  
150-66 Deluxe Under Table Switch Machine  
Reg. Price: \$19.95  
Sale: \$15.98



**HO World's Greatest Hobby Track Pack**  
Kato. Fits a 4 x 8' area, and can easily be expanded.  
381-3103 World's Greatest Hobby Track Pack  
Reg. Price: \$205.00  
Sale: \$179.98



**HO #4/6 Cork Turnout pkg(2)**  
Itty Bitty Lines  
357-1500 Right Hand  
357-1501 Left Hand  
Reg. Price: \$5.95 Sale: \$4.98



**HO Roof Details**  
Walthers Cornerstone  
Modulars™  
933-3733 Roof Details  
Reg. Price: \$5.98 Sale: \$3.98



**HO 72' Centerbeam Flatcar Lumber Stack Load - Kit**  
Walthers  
933-1101 Georgia-Pacific  
933-1102 Slocan Group  
933-1103 Louisiana Pacific  
933-1106 High Cascade Lumber  
Reg. Price: \$9.98 Sale: \$7.98



**Colored Weathering Powders**  
A I M Products  
110-3100 Assortment pkg(8)  
Reg. Price: \$39.50  
Sale: \$34.98



*Car Sold Separately*

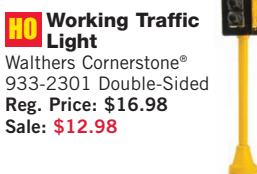
**HO Coil Steel Load**  
Chooch  
214-7235 Coil Steel Load  
Reg. Price: \$10.99  
Sale: \$9.98



**Steam Boiler Equipment Load**  
Chooch  
214-7280 40 Ton  
Reg. Price: \$14.99  
Sale: \$12.98



**HO End-of-Train Device**  
Tomar  
81-822 Red Lens  
Reg. Price: \$14.65  
Sale: \$12.98



**HO Working Traffic Light**  
Walthers Cornerstone®  
933-2301 Double-Sided  
Reg. Price: \$16.98  
Sale: \$12.98



**HO Modern Two-Lane Cantilever Style Grade Crossing Signal**  
Walthers Cornerstone Series  
933-2303 Modern Two-Lane Cantilever Style Grade Crossing Signal  
Reg. Price: \$39.98  
Sale: \$29.98



**HO Crossing Signal Controller**  
Walthers Cornerstone  
933-2307 Crossing Signal Controller  
Reg. Price: \$35.98  
Sale: \$27.98



**Grain of Wheat Bulb**  
Life-Like Products  
433-1217 14V DC pkg(2)  
Reg. Price: \$5.98 Sale: \$3.98



**Animated Neon Sign Kit w/6 Overlays**  
 Micro Structures  
 502-66811 Downtown Series #1  
 Reg. Price: \$26.95  
 Sale: \$23.98



**HO Electric Utility Pole Set**  
 Walthers Cornerstone  
 933-3101 Electric Utility Pole Set pkg(24)  
 Reg. Price: \$10.98  
 Sale: \$8.98



**HO Tobacco Plants**  
 Busch. Covers 3-3/8 x 3-3/8" 10 x 10cm  
 189-1221 56 1" 2.5cm Tall  
 Reg. Price: \$27.99  
 Sale: \$22.98



**HO Asphalt Country Road**  
 Busch  
 189-6033 Asphalt Country Road w/White Line Markings  
 Reg. Price: \$6.99 Sale: \$5.98



**NEW HO Asphalt Parking Lot**  
 Busch  
 189-9713 Asphalt Parking Lot (asphalt gray w/white markings)  
 Reg. Price: \$5.99 Sale: \$4.98



**HO Self-Adhesive Mini Grass Mat**  
 Busch. 15-5/8 x 10-5/8" 39 x 26.5cm  
 189-7293 Spring Green  
 Reg. Price: \$9.99 Sale: \$6.98

**Prepared Matte Medium**  
 Scenic Express  
 653-10 Prepared Matte Medium 16oz  
 Reg. Price: \$4.98  
 Sale: \$3.98



**PlasterWrap**  
 Scenic Express  
 653-60 PlasterWrap 8"x 15' Cloth  
 Reg. Price: \$6.49 Sale: \$5.98

**Water Effects**  
 Woodland Scenics  
 785-1212 Water Effects 8 fl.oz  
 Reg. Price: \$15.99  
 Sale: \$11.98



**HO Travelers**  
 Model Power  
 490-5779 Travelers  
 Reg. Price: \$8.98 Sale: \$6.98



**HO Loading Dock Workers**  
 Preiser  
 590-14147 Loading Dock Workers pkg(5)  
 Reg. Price: \$10.99  
 Sale: \$8.98



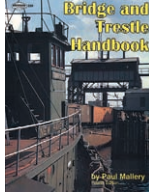
**HO Unpainted Seated Passengers**  
 Preiser  
 590-16349 Unpainted Seated Passengers pkg(36)  
 Reg. Price: \$13.99  
 Sale: \$11.98



**Walthers Exclusive HO 1950s PD 4103 Intercity Bus**  
 Classic Metal Works Mini Metals  
 221-32104 Greyhound (Blank Destination Sign)  
 Reg. Price: \$21.99  
 Sale: \$17.98



**HO 1950 Dodge Meadowbrook 4-Door Sedan**  
 Classic Metal Works Mini Metals  
 221-30229 Yellow Cab Co.  
 Reg. Price: \$13.00  
 Sale: \$9.98



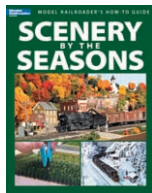
**Bridge & Trestle Handbook**  
 Carstens  
 205-99 Bridge & Trestle Handbook  
 Reg. Price: \$22.95  
 Sale: \$19.98



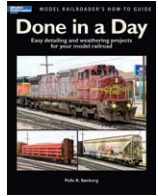
**How To Build Realistic Model Railroad Scenery**  
 Kalmbach  
 400-12216 How To Build Realistic Model Railroad Scenery  
 Reg. Price: \$24.95  
 Sale: \$21.98



**NEW The Allegheny Midland: Lessons Learned**  
 Kalmbach  
 400-12438 The Allegheny Midland: Lessons Learned  
 Reg. Price: \$21.95  
 Sale: \$19.98



**NEW Scenery by the Seasons**  
 Kalmbach  
 400-12455 Scenery by the Seasons  
 Reg. Price: \$21.95  
 Sale: \$19.98



**Done in a Day**  
 Kalmbach  
 400-12458 Done in a Day  
 Reg. Price: \$19.95  
 Sale: \$16.98



**Model Scenery Made Easy DVD**  
 Woodland Scenics  
 785-973 Model Scenery Made Easy DVD  
 Reg. Price: \$24.99  
 Sale: \$19.98



**SubTerrain: A How To Video**  
 Woodland Scenics  
 785-1400 SubTerrain: A How To Video  
 Reg. Price: \$24.99  
 Sale: \$19.98



**SubTerrain How-To Video**  
 Woodland Scenics  
 785-1401 SubTerrain How-To Video  
 Reg. Price: \$24.99  
 Sale: \$19.98



**SubTerrain How-To Manual**  
 Woodland Scenics  
 785-1402 SubTerrain How-To Manual  
 Reg. Price: \$8.99 Sale: \$6.98

## Leader of the Fleet!

**T**hundering over the great “broad way” between New York and Chicago, no finer train served the Pennsylvania than the Broadway Limited. Its exclusive clientele demanded — and received — the very best, from equipment to impeccable service.

Flagship of a Blue Ribbon fleet of luxury streamliners, the Broadway was the ultimate blend of luxury and speed. Based on the 1956 train and re-created in exacting HO Scale, Walthers seventh complete name train captures the magic of the Broadway at its very best.

The complete consist includes nine all-new cars and matching PROTO 2000® E8 diesels, all with the finest detail you expect from Walthers, the name train experts.

# BROADWAY LIMITED



Prototype photo from the collection of Dan Pope.

### Power for Pennsy's Finest — PROTO 2000® E8A Units

Handling the Blue Ribbon Fleet, Pennsy's 74 E8A units began arriving in 1949 and provided outstanding power and performance for years. Like their prototypes, Walthers E8s include Train Phone antenna, an improved five-chime air horn replica, nose lift rings and much more. Multiple unit numbers are available, and each is factory-finished in authentic paint, lettering and striping to match the cars. Choose Sound and DCC equipped, or Standard DC versions. Other features include:

- See-Through Air Intake Grilles
- Painted Metal Grab Irons, Handrails & Lift Rings
- Superb Paint & Lettering
- Five-Pole, Skew-Wound, High-Torque, High-Efficiency Can Motor
- Helical Gears with 12:1 Ratio for Smooth, Ultra-Quiet Running
- Easy Multiple-Unit Operation
- Proto MAX™ Metal Knuckle Couplers

### E8 A-A Sets

Fall 2011 Delivery\*

920-41360 #5804A & 5807A w/Sound & DCC \$499.98\*

920-41363 #5712A & 5713A w/Sound & DCC \$499.98\*

920-48360 #5804A & 5807A Standard DC \$349.98\*

920-48363 #5712A & 5713A Standard DC \$349.98\*

### E8A Units Only

Fall 2011 Delivery\*

920-41361 #5803A w/Sound & DCC \$259.98\*

920-41364 #5710A w/Sound & DCC \$259.98\*

920-48361 #5803A Standard DC \$179.98\*

920-48364 #5710A Standard DC \$179.98\*

### E7B Units Only

Fall 2011 Delivery\*

920-41362 #5840B w/Sound & DCC \$259.98\*

920-41365 #5848B w/Sound & DCC \$259.98\*

920-48362 #5840B Standard DC \$179.98\*

920-48365 #5848B Standard DC \$179.98\*



### **Nine All-New HO Models Include:**

- All Grab Irons Factory-Installed & Painted
- Prototypically Accurate Window Tinting
- Based on Equipment in Broadway Service 1956-68
- Authentic Paint, Lettering & Striping

- Car Name & Number Decals as Appropriate
- Superb Detail Inside & Out
- Proto MAX™ Metal Knuckle Couplers
- Correct Trucks with RP-25 Metal Wheels

### **First Car Arrives January 2011\* | \$64.98 Each (Unless Noted)**



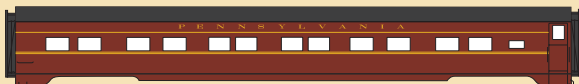
**BM70m Railway Post Office Baggage**  
August 2011 Delivery\*  
• Correct 3D-P1 6-wheel Trucks  
932-9700 Pennsylvania | 932-9701 Undecorated



**Budd "Inn" Series 21-Roomette Sleeper, Job #9667-024**  
January 2011 Delivery\*  
932-9630 Pennsylvania | 932-9631 Undecorated



**P-S "Creek" Series 12 Duplex 4 Bedroom Sleeper, Plan #4130, Lot #6792**  
\$69.98 Each | May 2011 Delivery\*  
932-9670 Pennsylvania | 932-9671 Undecorated



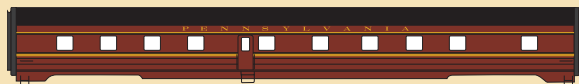
**P-S "Imperial" Series 4-4-2 Sleeper, Plan #9009, Lot #2982**  
July 2011 Delivery\*  
932-9690 Pennsylvania | 932-9691 Undecorated



**P-S "Harbor" Series 2 Bedroom Buffet Lounge, Plan #4141, Lot #6792**  
June 2011 Delivery\*  
932-9680 Pennsylvania | 932-9681 Undecorated



**Budd 68-Seat Full Diner #4610, 4614-4622, Job #9666-024**  
February 2011 Delivery\*  
932-9640 Pennsylvania | 932-9641 Undecorated



**Budd Kitchen-Dormitory #4611, 4615-4623, Job #9665-024**  
March 2011 Delivery\*  
932-9650 Pennsylvania | 932-9651 Undecorated



**P-S "Rapids" Series 10-6 Sleeper, Plan #4129, Lot #6792**  
April 2011 Delivery\*  
932-9660 Pennsylvania | 932-9661 Undecorated



**P-S "View" Series 2 Master Bedroom, 1 Bedroom Buffet Lounge Observation, Plan #4133, Lot #6792**  
\$69.98 Each | September 2011 Delivery\*  
932-9710 Pennsylvania | 932-9711 Undecorated

### **All First Edition Cars Include:**

- Certificate of Authenticity
- Special Equipment History

**SPECIAL LIMITED  
TIME OFFER!**

**Reserve the complete first edition train and receive:**

- Exclusive Broadway Limited Crew Figure Set by Preiser
- Exclusive Platform Sign & Wrought-Iron Fence Set
- Order must be placed by December 31 to qualify!

*Find a hobby shop near you — Call 1-800-487-2467  
or visit [walthers.com](http://walthers.com) for more information on the entire Broadway Limited!*

\*Delivery dates and prices shown were accurate at press time; for updates, visit your participating dealer, see the latest Walthers Flyer™ or visit [walthers.com](http://walthers.com).  
Sketches shown for illustration purposes only, actual colors and details may vary.

**WALTHERS™**



Name

# The Train Authority

Bringing your model railroading dreams to life since 1932.

[walthers.com/upcities](http://walthers.com/upcities)

Wm. K. Walthers, Inc., is a licensed supplier of products bearing Union Pacific trademarks.

# WALTHERS™

# 20<sup>TH</sup> CENTURY LIMITED

- Based on 1948 Train
- 9 Completely New Cars
- Authentic Paint & Lettering
- Superbly Detailed Inside & Out
- Proto MAX™ Metal Knuckle Couplers
- Matching PROTO 2000® E7 Diesels
- Certificate of Authenticity
- Special Equipment History



## Get the Entire Train!

### Here's What the Experts are Saying!

**"Walthers should be congratulated for finally getting the NYC two-tone grays right!"**

*Rich Stoving, Director, New York Central System Historical Society*

**"Based on actual paint samples in possession of NYCSHS members, the color of these new Walthers 1948 20th Century cars are nearly dead-on."**

*Terry Link, Owner, canadassouthern.com, NYC modeling Web site*

### HO PROTO 2000® EMD E7 Phase II Diesels



A-B Set w/Sound and DCC | 920-40993 #4024 & #4108 | 920-40995 #4025 & #4109 | \$499.98  
 A Unit w/Sound & DCC | 920-40994 #4028 | 920-40996 #4029 | \$259.98  
 A-B Set Standard DC | 920-47993 #4026 & #4110 | 920-47995 #4027 & #4111 | \$349.98  
 A Unit Standard DC | 920-47994 #4030 | 920-47996 #4031 | \$179.98

### HO New York Central 20th Century Limited | \$64.98 Each (Unless Noted)



60' "Full" Railway Post Office #5017-20 | 932-9317 NYC | 932-9460 Undecorated



"... Bridge" Series 4-4-2 Sleeper | 932-9311 NYC | 932-9340 Undecorated



"...River" Series 10-6 Sleeper | 932-9313 NYC | 932-9380 Undecorated



"...Shore" Series Club-Lounge | 932-9310 NYC | 932-9320 Undecorated



Kitchen-Dormitory #474-75 | 932-9318 NYC | 932-9480 Undecorated



68-Seat Full-Length Dining Car #400-03 | 932-9316 NYC | 932-9440 Undecorated



"Port..." Series 12 Double-Bedroom Sleeper | 932-9314 NYC | 932-9400 Undecorated



"...Bay" Series 22-Roomette Sleeper | 932-9315 NYC



"...Creek" Series 5 Double Bedroom Buffet-Lounge-Observation | \$69.98  
932-9312 NYC

See the 20th Century video online at [www.walthers.com/videos](http://www.walthers.com/videos)



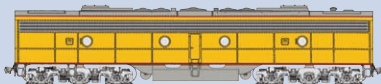
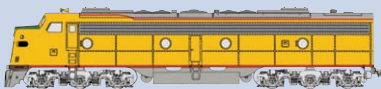
## UP<sup>+</sup> City Streamliners New Cars Now Arriving!

- Complete Consists for City of Los Angeles 1955-60, City of San Francisco 1955-60 & Challenger 1955-58
- Great Starting Point for: City of Portland 1955-59, City of Denver 1955-59, City of St. Louis 1955, 1958-60s, Combined City of Los Angeles/San Francisco 1960s & Combined City of Portland/Denver 1959-1960s
- Factory-Installed & Painted Grab Irons As Appropriate
- Prototypically Tinted Green Windows
- Authentic Paint & Lettering
- Car Name or Number Decals
- Correct Trucks w/RP-25 Metal Wheels
- Proto MAX™ Metal Knuckle Couplers
- Matching PROTO 2000® E8 Diesels in Sound & DCC or Standard DC Versions



Check out the complete Union Pacific<sup>+</sup> City series at your local hobby shop — visit [walthers.com](http://walthers.com) to find a store near you or for more information.

# Distinctive in Design



### PROTO 2000 EMD E8 Diesels December 2010 Delivery

#### A-B Sets

920-41350 #933 & 939B w/Sound & DCC \$499.98  
 920-41353 #937 & 946B w/Sound & DCC \$499.98  
 920-48350 #931 & 933B Standard DC \$349.98  
 920-48353 #938 & 938B Standard DC \$349.98

#### A Units Only

920-41351 #930 w/Sound & DCC \$259.98  
 920-41354 #940 w/Sound & DCC \$259.98  
 920-48351 #939 Standard DC \$179.98  
 920-48354 #934 Standard DC \$179.98

#### B Units Only

920-41352 #937B w/Sound & DCC \$259.98  
 920-41355 #948B w/Sound & DCC \$259.98  
 920-48352 #945B Standard DC \$179.98  
 920-48355 #936B Standard DC \$179.98



#### Imperial... Series 4-4-2 Sleeper

\$64.98 Each | In Stock  
 932-9490 UP | 932-9491 Undecorated



#### Placid... Series 11 Double-Bedroom Sleeper

\$64.98 Each | In Stock  
 932-9500 UP | 932-9501 Undecorated



#### Ocean... Series 5-2-2 Sleeper

\$64.98 Each | In Stock  
 932-9510 UP | 932-9511 Undecorated



#### City Series 5 Double Bedroom Buffet Lounge

\$64.98 Each | In Stock  
 932-9520 UP | 932-9521 Undecorated



#### 44-Seat Coach - #5450-5487

\$64.98 Each | In Stock  
 932-9530 UP | 932-9531 Undecorated



#### 48-Seat Diner - #4800-4817

\$64.98 Each | In Stock  
 932-9540 UP 932-9541 Undecorated



#### Cafe-Lounge - #5000-5006

\$64.98 Each | In Stock  
 932-9550 UP | 932-9551 Undecorated



#### Baggage-Dormitory - #6000-6008

\$64.98 Each | In Stock  
 932-9560 UP | 932-9561 Undecorated



#### Baggage - #5631-5663

\$64.98 Each | In Stock  
 932-9570 UP | 932-9571 Undecorated



#### Pacific... Series 10-6 Sleeper

\$64.98 | In Stock  
 932-9610 UP



#### Dome-Coach - #7000-7009

\$74.98 Each | September 2010  
 932-9580 UP | 932-9581 Undecorated



#### American... Series 6-6-4 Sleeper

\$64.98 | October 2010  
 932-9620 UP (Unskirted)



#### Dome-Diner - #8000-8009

\$74.98 | October 2010  
 932-9590 UP | 932-9591 Undecorated



#### Observation-Dome-Lounge - #9000-9014 (Mid Train Version)

\$74.98 Each | November 2010  
 932-9600 UP | 932-9601 Undecorated

# WALTHERS™

## The Legendary Super Chief is Back and Better than Ever!



Flashing across the desert floor the *Super Chief* rolls again in HO Scale — now with Walther's exclusive "stainless steel" finish, factory-installed grab irons and tinted windows — plus an all-new "Regal" 4-4-2 sleeper and matching PROTO 2000® Santa Fe 16 Class F3s!

Reserve your *Super Chief* today — call 1-800-487-2467 to find a shop near you or visit [walthers.com](http://walthers.com) for more information.

- New Real Metal Finish Simulates Stainless Steel
- ALL Grab Irons Factory Installed
- All-New "Regal" Series 4-4-2 Sleeper
- Prototypically Accurate Window Tinting



### All-new Tooling – first time in plastic!

P-S "Regal" Series 4-4-2 Sleeper  
932-9729 | \$64.98 | April 2011



Budd "Pine" Series 10-6 Sleeper  
932-9721 | \$64.98 | October 2010



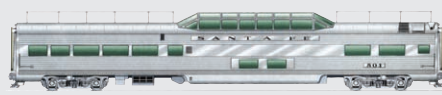
Budd 73' Baggage Car  
932-9722 | \$64.98 | November 2010



P-S 29-Seat Dormitory-Lounge  
932-9724 | \$64.98 | December 2010



P-S 36-Seat Diner  
932-9723 | \$64.98 | January 2011



P-S "Pleasure Dome" Bar-Lounge  
932-9726 | \$74.98 | February 2011



Budd 63' Railway Post Office  
932-9727 | \$64.98 | March 2011



P-S "Vista" Series Observation-Lounge  
932-9728 | \$69.98 | May 2011

## PROTO 2000 EMD F3 with Real Metal Finish

- Features Specific Details found on Santa Fe 16 Class F3 Locomotives:
  - \* Leslie 5-Chime Airhorn
  - \* Inertial Air Filter
  - \* "Can" Style Radio Antenna
  - \* "Stainless" Air Grilles
- 14:1 Gear Ratio for Easy Multiple-Unit Operations
- PROTO-Max™ Metal Knuckle Couplers

### A-B Sets

\$459.98 Sound & DCC | \$309.98 Standard DC  
920-41270 #34L & #34A w/Sound & DCC  
920-41271 #34C & #34B w/Sound & DCC  
920-48270 #36L & #36A Standard DC  
920-48271 #36C & #36B Standard DC

### A Units Only

\$259.98 Sound & DCC | \$169.98 Standard DC  
920-41272 #31L w/Sound & DCC  
920-41273 #31C w/Sound & DCC  
920-48272 #33L Standard DC  
920-48273 #33C Standard DC



Prices and delivery dates shown were accurate at press time; for updates, visit [walthers.com](http://walthers.com).  
Preproduction model photo and sketches shown for illustration purposes only, some colors and details may vary.



## HO EMD GP15-1

PROTO 1000™ from Walthers™. DCC-ready model features 14:1 gear ratio, five-pole skew-wound can motor and Proto MAX™ metal knuckle couplers.

920-35051 UP® #716 (Yard Scheme; Farr Air Filters)

920-35052 UP® #693 (Yard Scheme; Farr Air Filters)

920-35053 NS #1452 (black, white, Horse logo; Farr Air Filters)

920-35054 NS #1446 (black, white, Horse logo; Farr Air Filters)

920-35055 CSX #1545 (“Dark Future”; Farr Air Filters)

920-35056 CSX #1551 (“Dark Future”; Farr Air Filters)

920-35057 CR #1650 (blue, white, “Quality”; Inertial Air Filters)

920-35058 CR #1685 (blue, white, “Quality”; Farr Air Filters)

920-35059 BNSF #1478 (Standard Scheme; Internal Air Filters)

920-35060 BNSF #1496 (Patch Scheme; Internal Air Filters)

920-35061 BN #1385 (White Front; Internal Air Filters)

920-35062 BN #1386 (White Front; Internal Air Filters)

920-35063 CNW® #4404 (Traditional Yellow, green; Internal Filters)

920-35064 CNW® #4409 (Traditional Yellow, green; Internal Filters)

920-35065 California Northern #108 (Forest Green, white; Internal Air Filters)

920-35066 California Northern #112 (Forest Green, white; Internal Air Filters)

920-35070 Undecorated w/Internal Air Filters

**Reg. Price: \$99.98 Sale: \$69.98**



## NEW HO EMD E7 Phase I

PROTO 2000® from Walthers. Locomotives feature 12-wheel electrical pickup, correct bulldog nose and dual-machined brass flywheels.

**A-A Set Standard DC**

920-47987 SOU #2919 & #2922

920-47989 C&O #4514 & #4515

**Price: \$349.98**

**A Unit Standard DC**

920-47988 SOU #2918

**Price: \$179.98**



## HO ALCO FA-1

Walthers Trainline®

931-201 GN #310A (orange, green)

931-205 PRR #9600A

931-207 ATSF #202A

931-237 Spokane, Portland & Seattle

**Reg. Price: \$44.98 Sale: \$34.98**

Union Pacific licensed product



## HO EMD F3

PROTO 2000 from Walthers. Locomotives are equipped with helical gears, 14:1 gear ratio and five-pole skew-wound high-torque motor. Both A and B units are powered. Sound and DCC-equipped models can be operated on DC or DCC.

### A-B Set w/Sound & DCC

920-41231 CB&Q #160A & 160B

**Reg. Price: \$429.98 Sale: \$269.98**

### A Unit w/Sound & DCC

920-41232 CB&Q #160C

**Reg. Price: \$229.98 Sale: \$139.98**

### A-B Set Standard DC

920-48227 ATSF #201L & #201A

920-48228 ATSF #201C & #201B

920-48231 CB&Q #161A & #161B

920-48240 SP® #6104D & #6104C

920-48226 Undecorated

**Reg. Price: \$299.98 Sale: \$189.98**

### A Unit Standard DC

920-48232 CB&Q #161C

**Reg. Price: \$159.98 Sale: \$99.98**

920-48236 GN #259B

**Reg. Price: \$159.98 Sale: \$99.98**

### Save on B&O A Unit Too!

920-48230 B&O #84

**Reg. Price: \$159.98 Sale: \$139.98**

### B Unit Standard DC

920-48243 B&O #84X

**Reg. Price: \$159.98 Sale: \$139.98**



## NEW HO EMD F7A-B

PROTO 2000 from Walthers. Features 14:1 gear ratio, helical gears, five-pole skew-wound can motor and Proto MAX metal knuckle couplers. Both A and B units are powered.

920-40674 KCS #72D & 59C (red, black)

**Price: \$479.98**



## HO EMD E7A

PROTO 2000 from Walthers. Sound and DCC-equipped model features 12-wheel electrical pickup and dual machined brass flywheels.

920-40957 B&O #1422

**Reg. Price: \$249.98 Sale: \$219.98**



## HO Fairbanks-Morse H10-44

PROTO 2000 from Walthers. Features include prototype-specific detailing, five-pole skew-wound motor, heavy die cast chassis and RP-25 metal wheels.

### Sound & DCC

920-40794 DRGW® #122

920-40795 DRGW® #123

920-40796 N&W #2132

920-40797 N&W #2133

920-40798 UP® #1301

920-40799 UP® #1304

920-40800 Monon #18

920-40802 PC #8256 (ex-PRR Lettering w/PC Roadnumber)

920-40803 PC #8260 (ex-PRR Lettering w/PC Roadnumber)

920-40804 SLSF #274 (red, white)

920-40805 SLSF #279 (red, white)

920-40806 Wabash #382

920-40807 Wabash #383

920-40809 PRR #9089

920-40810 PRR #9095

**Reg. Price: \$249.98 Sale: \$169.98**

### Standard DC

920-47789 PRR #9187 (Brunswick Green, Buff, small engine number)

920-47794 DRGW® #120

920-47795 DRGW® #121

920-47796 N&W #2127

920-47797 N&W #2128

920-47798 UP® #1301

920-47799 UP® #1303

920-47800 Monon #18

920-47802 PC #8244 (ex-PRR Lettering w/PC Roadnumber)

920-47803 PC #8248 (ex-PRR Lettering w/PC Roadnumber)

920-47804 SLSF #270 (red, white)

920-47805 SLSF #273 (red, white)

920-47806 Wabash #380

920-47807 Wabash #381

920-47809 PRR #9083

920-47810 PRR #9087

920-47808 Undecorated Phase IIB Long Hood

**Reg. Price: \$159.98 Sale: \$109.98**



## HO USRA 2-8-2

PROTO 2000 Heritage Steam Collection from Walthers. Sound and DCC-equipped model features dual flywheels, 16-wheel drive and 24-wheel electrical pickup.

920-60201 Clinchfield #737

920-60204 DRGW® #3504

920-60205 N&W #2005

920-60206 N&W #2016

920-60209 Virginian #704

920-60210 Virginian #709

**Reg. Price: \$549.98 Sale: \$379.98**