



HO Structure Kit BUS MAINTENANCE GARAGE 933-3360

Thanks for purchasing this Cornerstone kit. Please take a few minutes to read these instructions and study the drawings before starting construction - if you're not sure how parts go together, test fit before gluing! All parts are styrene plastic so use compatible glue and paint to assemble and finish your model. If you wish to paint your model, wash all parts in warm water and plain dish soap, rinse thoroughly and allow to dry before painting. You may find it easier to assemble and paint larger parts as subassemblies, while smaller parts can be painted while on the sprues and touched up after installation.

Fast-growing American cities of the early 1800s often meant residents had a longer journey to get to work or to shop in downtown business centers. Borrowing an idea introduced in France, around 1829, enterprising New York businessmen modified stage-coaches for local use, creating the horse-drawn "omnibus." This required some sort of shelter for the horses and equipment, often a variation of barns used on local farms. While little better than walking, the idea caught on quickly, but as the average horse produces some 22 pounds of manure each day, and the number of horses in the city was often greater than the population, city fathers began looking at alternatives to the "horse problem." In many communities, electric streetcars provided an easy answer, running on their own tracks and capable of faster speeds. These too needed to be maintained, and as a salute to the old days, these larger facilities came to be known as "car barns." Cheaper to operate and able to go almost anywhere in town, it wasn't long before gas-powered buses took over. Their need for storage and specialized maintenance gave rise to purpose-built facilities, and as other city services such as the fire department and streets and sanitation made the switch to trucks, the municipal garage became a fixture in cities of every size. Today, specialized garages like your new model still serve big cities, but can also be found in small towns where school buses pick up kids living on country routes. You'll also see similar garage-style buildings used by volunteer fire departments and as satellite facilities by township, state and county highway departments. For additional vehicles, figures, scenery materials and more to complete your scene, see your local hobby dealer, visit us online at walthers.com, or check out the current Model Railroad Reference Book.

3-BAY GARAGE

1) Doors & Windows

Front Wall (2): Entry Door (22), PLEASE NOTE: Overhead Doors (3x 8) may be glued in place as shown or left off to model open doors.

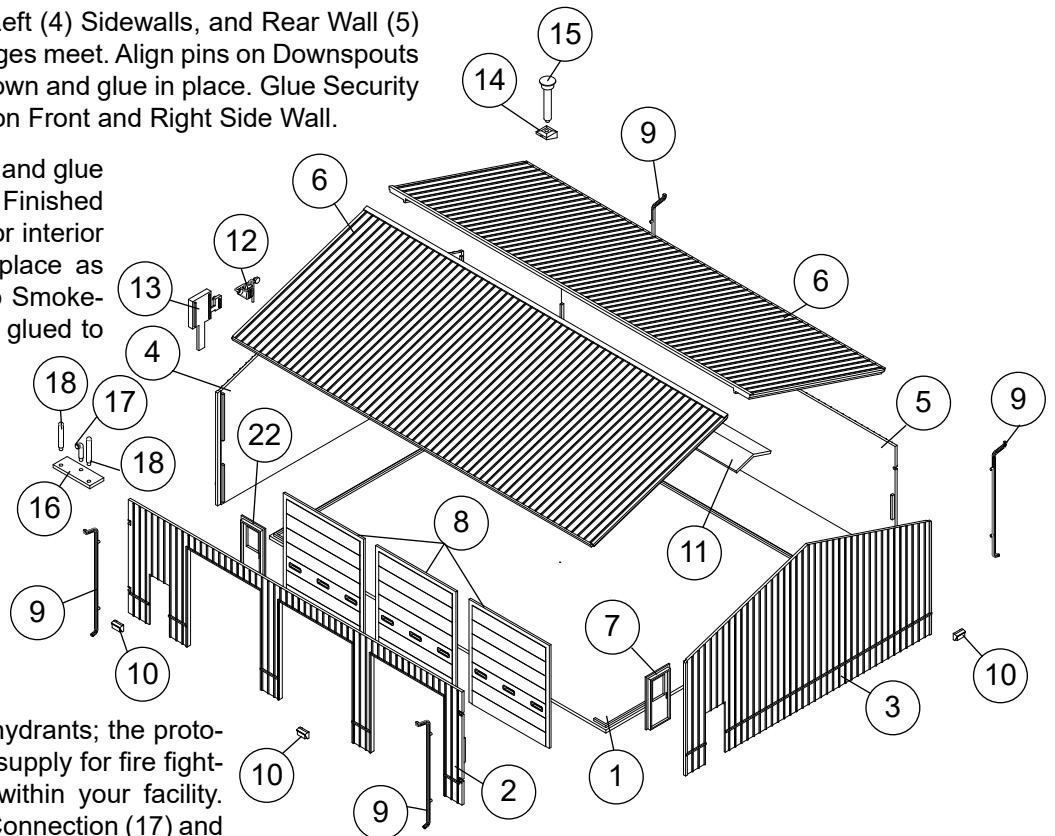
Right Wall (3): Entry Door (22).

Acetate is provided for glass; cut pieces slightly larger than windows or doors and glue to back with white glue.

2) Using raised ridges on Base (1), and tabs and slots molded on inside corners, glue Front (2), Right (3) and Left (4) Sidewalls, and Rear Wall (5) to base and at inside corners where edges meet. Align pins on Downspouts (4x 9) with openings in sidewalls as shown and glue in place. Glue Security Lights (10) to any convenient location on Front and Right Side Wall.

3) Using inset area on underside, align and glue Roof Brace (11) to Roof Halves (2x 6). Finished roof may be set in place to add lights or interior details (sold separately) or glued in place as desired. Glue Smokejack Base (14) to Smokejack (15); completed assembly can be glued to roof at any convenient location.

4) PLEASE NOTE: The small round pieces molded on the Gas Meter (12) simulate regulator valves - do not remove when cutting from sprues - Glue Gas Meter and Electrical Panel (13) to any convenient location.

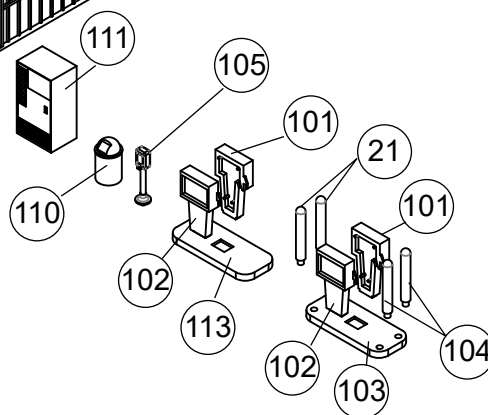
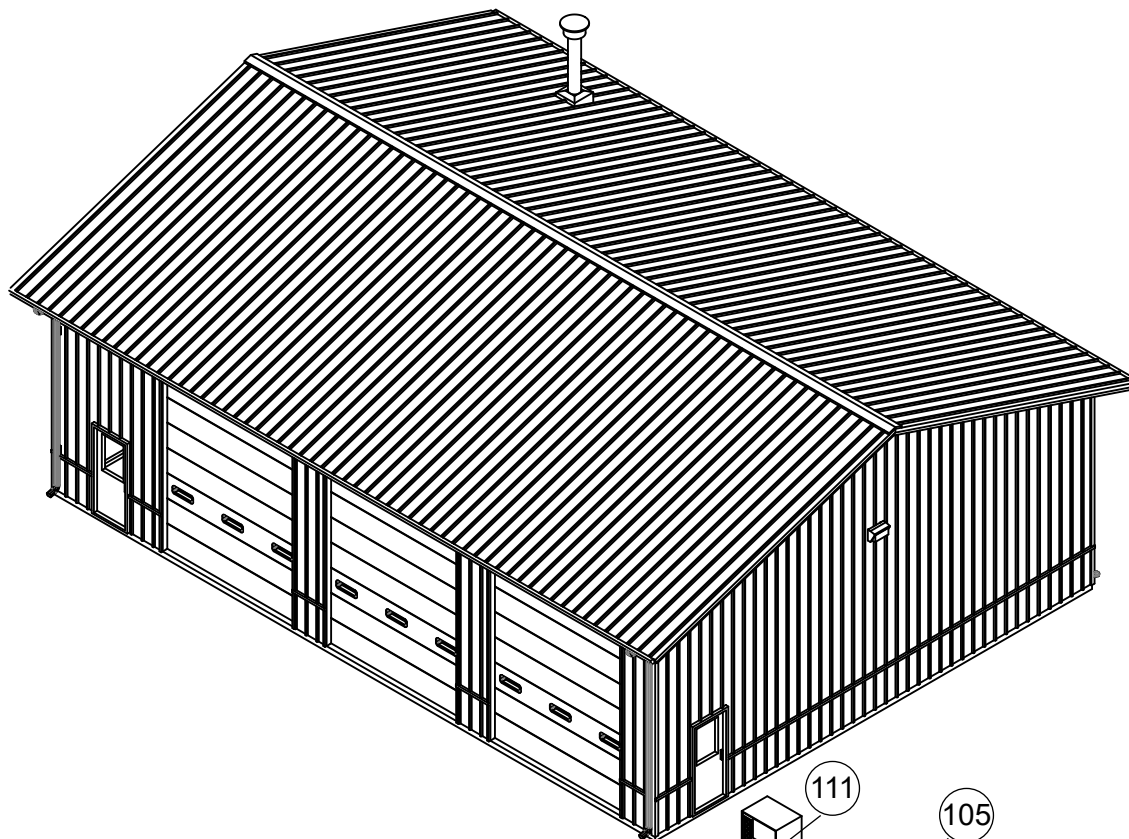


DRY HYDRANTS (STAND PIPES)

1) Parts are included to build two dry hydrants; the prototypes provide a connection to a water supply for fire fighting, and can be installed anywhere within your facility. Assemble both by gluing Dry Hydrant Connection (17) and Safety Posts (2x 18) to openings in Hydrant base (16).

Islands & Gas Pumps

PLEASE NOTE: Two styles of gas pump islands are provided; #103 represents a modern style with safety bollards, while #113 can be used for an earlier installation. Choose one and follow these instructions - Both versions: Glue Front (102) and Rear (101) Pump Halves together. Insert tab on bottom of Pump into opening in Base and glue in place. For #103 only, align pins on bottom of Bollards (4x 104) with openings in Base and glue where parts meet.



Accessories

Vending Machine (111), Wastebasket (110) and Air Compressor (105) may be installed at a convenient location as desired.

DECALING

1. After cutting out the decal, dip in water for 10 seconds, remove and let stand for 1 minute. Slide decal onto surface, position and then blot off any excess water.
2. Lightly brush Micro Sol on top. This will soften the decal, allowing it to conform to irregular surfaces. DO NOT TOUCH DECAL while wet!
3. When decal is thoroughly dry, check for any trapped air bubbles. Prick them with the point of a small pin or hobby knife blade and apply more Micro Sol.

For assistance with missing or damaged parts, please visit trains.walthers.com/parts-warranty, call 1-800-4-TRAINS M-F from 8:00 AM to 4:30 PM CT, or write to us at Wm. K. Walthers, Inc. 5601 W. Florist Ave, Milwaukee, WI 53218. Please be aware all inquiries are handled in the order received.