



# MACON'S HO Scale Structure Kit 933-3321



Thanks for purchasing this Cornerstone® Lasercut kit. Please take a minute to read these instructions carefully and study the drawings before starting. Kit components are wood, cardstock, plastic and metal. The approach to gluing, painting and finishing each material will vary slightly, so be sure to use compatible glues and paints to finish your model.

Whether it's a small industrial workshop, main street business or a current day farm stand selling in season produce, Macon's is a typical structure that can be located on the outskirts of a large city, out in the countryside or simply next to the tracks. It will fit any era from the 1930s up to the current day. In addition, the colors, weathering and signs will help define the age and purpose of the structure on your layout.

Although the kit comes complete with signs and metal details, a wide range of figures, vehicles and accessories are available to further complete your scene. See your dealer, check out the latest Walters HO Scale Reference Book or visit [walters.com](http://walters.com) for more ideas.



Two sets of signs are included with this kit. Use a straight-edge and a sharp hobby knife to remove them from this sheet. Apply white/wood glue to the back of the signs, position them, and apply slight pressure to affix them to the structure.

# Working With Laser-Cut Craftsman Kits

## Tools

A modeler's knife with a sharp #11 blade, a cutting mat, a single edged razor blade, a metal ruler, sanding sticks or files are all that is required for most kits. Clamping materials such as rubber bands, clothespins, small weights, and low-tack masking tape are also helpful in holding parts together while the glue dries.

## Adhesives

Wood glue is recommended for joining wood-to-wood or wood-to-paper. Use CA type glue for joining dissimilar materials, such as, wood to metal or plastic to wood.

Some of the parts have peel and stick adhesive applied on the back. After the backing is removed, use very light pressure when first positioning the part. This will allow you to reposition the part if necessary. Once you are satisfied with the positioning, press down firmly. Note: Use paint sparingly on these pieces as the moisture can soak through and cause the adhesive to lose its grip.

## Painting

### Wood

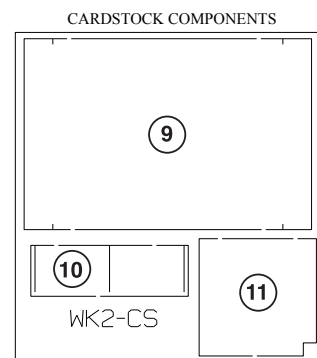
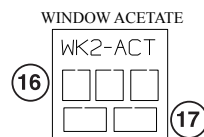
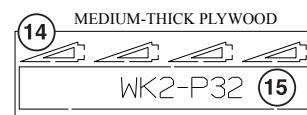
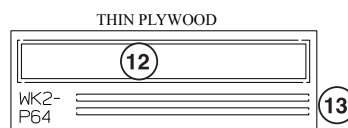
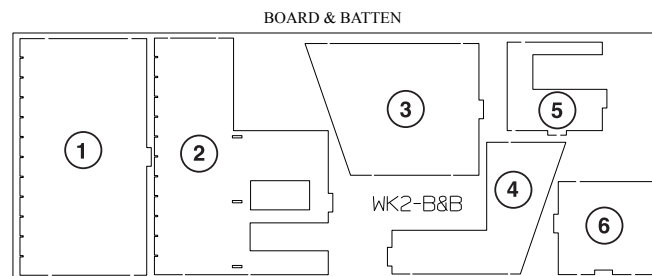
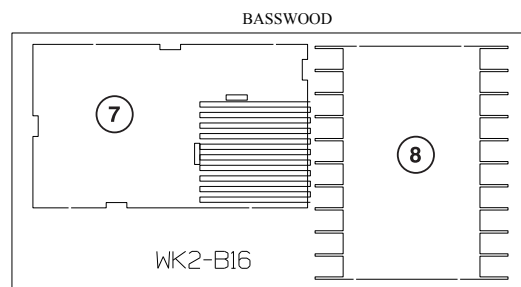
You can use solvent or water based paints to decorate your structure. However, if you decide to use water-based paint, we recommend priming both sides of the wood with a gray auto primer before applying the final colors. Doing this will help prevent warping of the wood due to the high water content. Note: On any surfaces that will remain bare wood or have a wood stain applied, mask those areas off before priming—loading docks or wood floors are examples of areas that would remain unpainted or stained.

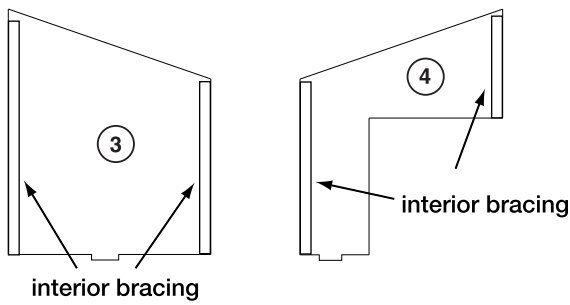
### Metal

After cleaning off parting lines, wash off parts and let dry. Then use an auto primer before final finishing with your paint of choice.

## PART LOCATOR DIAGRAM

(Not to Scale)

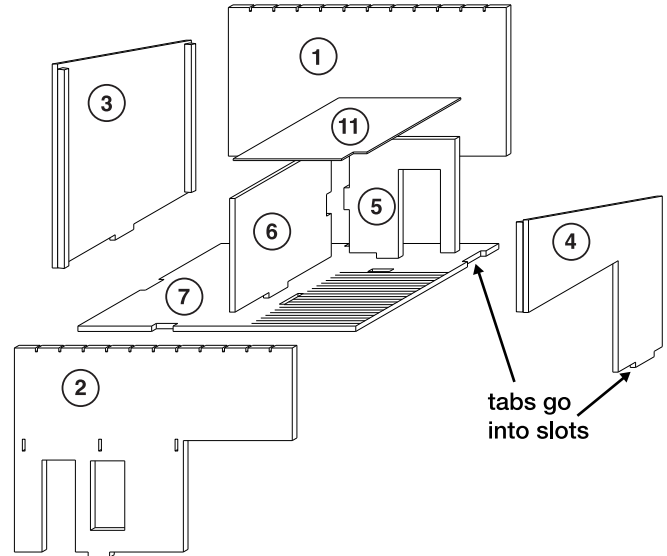
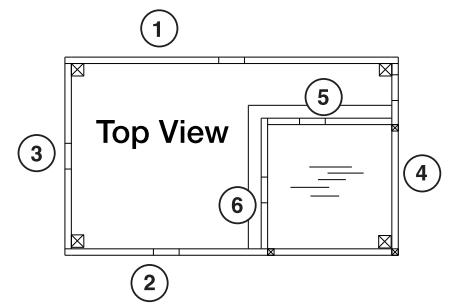




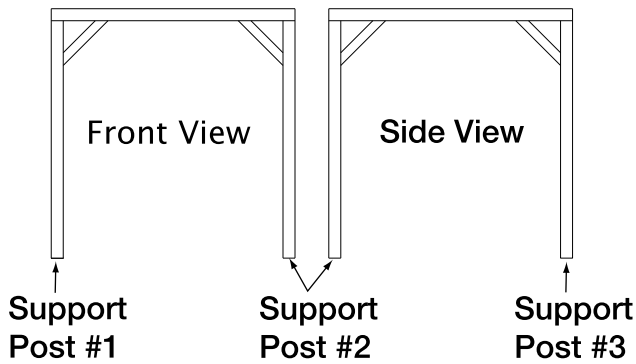
1. Cut interior bracing to fit flush with the edges of walls #'s 3 and 4 and glue in place.

2. Glue the walls (1, 2, 3, 4, 5, 6) together and to the floor (7) as shown. Put the tabs into the appropriate slots in the floor. Glue the ceiling (11) in place.

3. Following the full-size templates below, cut and glue together the supports from the 5/64" strip wood. When dry, glue in place.



### Building Support Templates

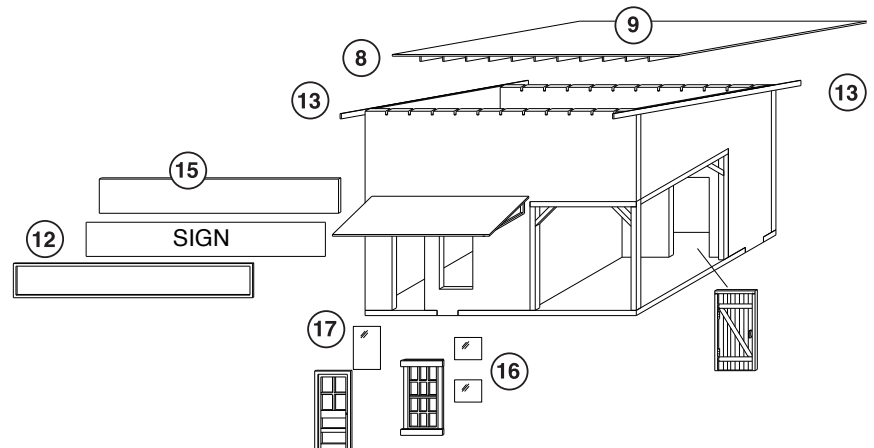
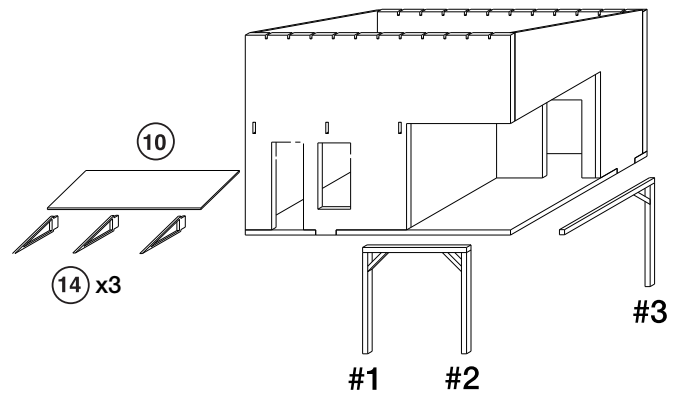


4. Glue the overhang supports (14) into the slots on the front wall (2). Add the "roofing paper" to the overhang (10) and trim to fit. Then glue the overhang in position on the supports.

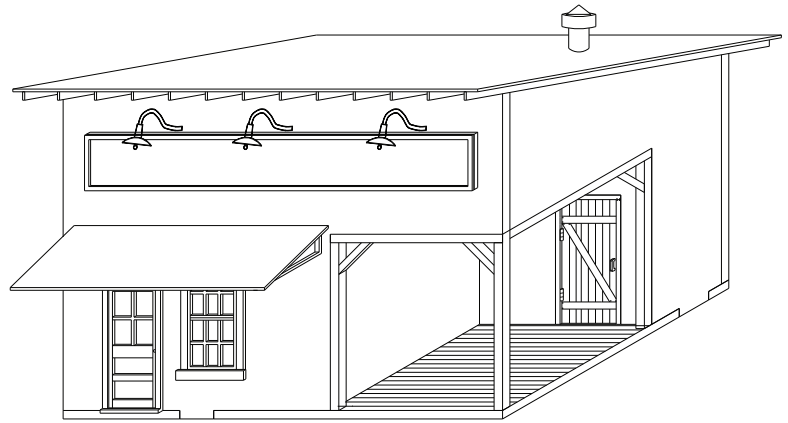
5. Glue the rafter section (8) to the underside of the roof (9). Add the "roofing paper" and trim to fit. Then glue the roof on top of the structure. Affix the trim (13) on the side walls below the roof.

6. Cut out paper sign and sandwich it between the sign board (15) and sign trim (12). Glue the finished sign onto the front wall.

7. Glue the window acetates (16) to the back of the window and the door acetate (17) to the back of the door. Then glue the two doors and window into the openings as illustrated.



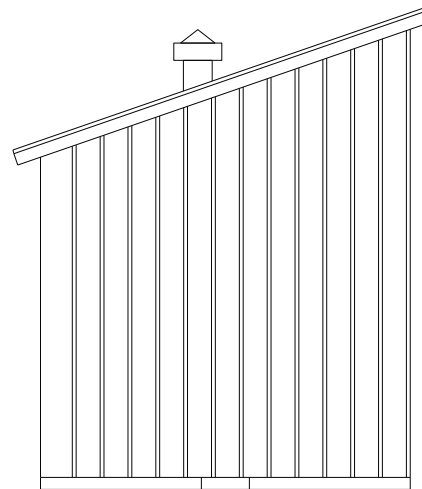
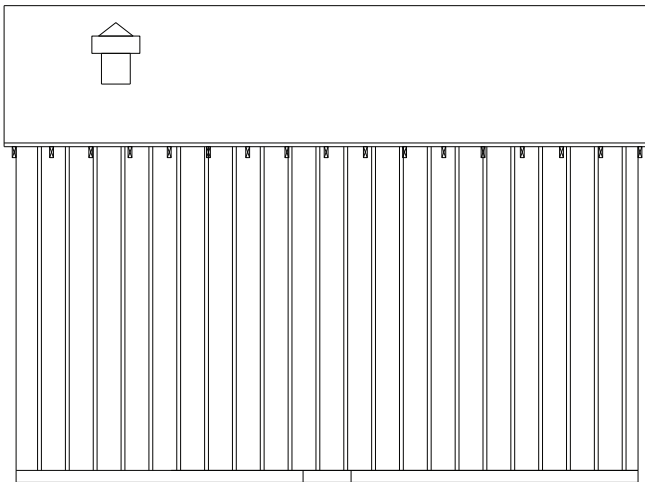
8. Using a #74 drill, drill holes above the sign where you wish to place the goose-neck lamps. Glue in place. Finally glue the roof vent on.



## FULL-SIZED SCALE DRAWINGS

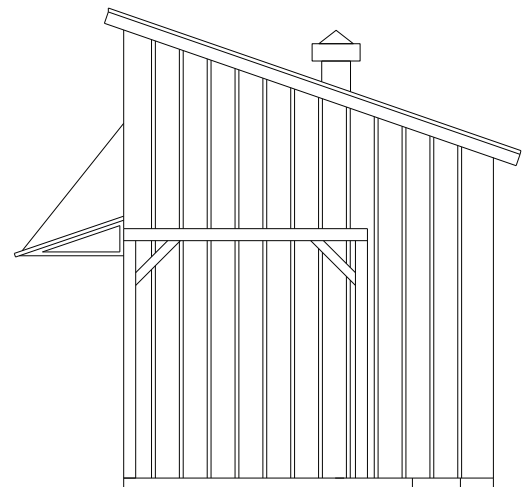
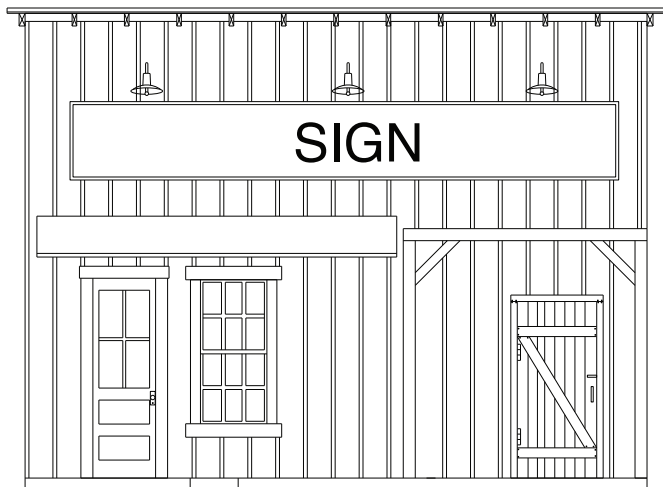
If you would like to paint your model in the same color scheme as shown in the photo, the colors are listed below.

**Tarpaper: Grimy Black**



**Siding, Rafter Ends & Roof Trim: Vermont Green**

**Sign & Edges: Earth**



**Floor, Top & Sides: Weathered Natural Wood**

**Doors, Windows, Supports & Roof Supports: Dirty White**