**NOTE:**

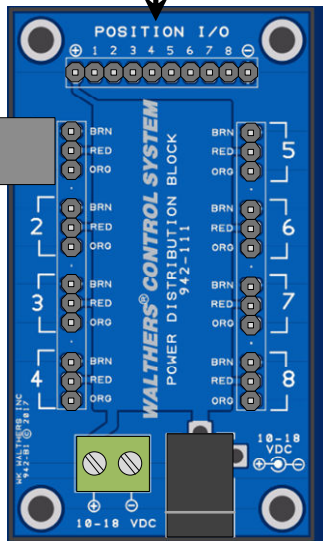
- 1) Mount Power Distribution Block in a location central to the switch machines you wish to connect.
- 2) Mount to benchwork using screws and spacers supplied. Drill pilot holes using #43 bit (from 942-140 Drill Set) if needed.

WALTHERS®

942-111 POWER DISTRIBUTION BLOCK ELECTRICAL CONNECTIONS

SWITCH MACHINE
POWER CABLE
(FOLLOW COLOR CODE)
USE EXTENSION CABLE
942-113 AS NEEDED
(UP TO 4)

OPTIONAL
POSITION I/O TO/FROM
DIGITAL CONTROL DEVICE



You may connect up to
16 switch machines to the
942-110 12V 2A Power Supply

ALTERNATE 10-18 V FILTERED
DC POWER INPUT
—— OR ——
INDEPENDENT
DCC POWER INPUT
—— OR ——
POWER OUTPUT TO
SECOND 942-111 POWER
DISTRIBUTION BLOCK

CABLE FROM 942-110
12V 2A DC POWER SUPPLY

For additional connection information see the Switch Machine Reference Guide at
walters.com/products/walters-control-system.