



# HO Structure Kit MERCHANT ROW VII 933-4044

Thanks for purchasing this Cornerstone kit. Please take a few minutes to read the instructions and study the drawings before starting construction - if you're not sure how parts go together, test fit before gluing! Most parts are styrene plastic so use compatible glue and paint to assemble and finish your model. You may find it easier to first assemble larger parts and paint them as subassemblies, while smaller parts can be painted on the sprues and touched up after installation. If you wish to paint your model, wash all parts in warm water and plain dish soap, rinse thoroughly and allow to dry before painting. Brick structures are usually natural "earth" colors, with light or dark mortar between each course of bricks. Many were painted a solid color in later years. Wooden windows and doors were painted various trim colors, while decorative accents on the front wall and roofline (carved wood covered with sheet metal) were often painted to look like stone. PLEASE NOTE: two styles of entry (11, 105) are provided for the center storefront; choose one. The remaining entry may be kept for future projects or discarded as desired.

The 1950s brought significant changes to the business districts of small towns and big cities all across North America. Many of the existing commercial structures dated from the late 1800s, and followed traditional designs combining several structures under one roof to maximize the available space. Storefronts occupied the ground floor, offices or apartments were located above, and interiors were separated by firewalls. Many remained largely unchanged until the 1920s, when stainless steel, colored glass and aluminum became readily available, a trend that continued at a slower pace into the late 1930s when the Streamline Moderne style became popular. Shortages of labor and materials during WWII put these projects on hold until the early 1950s, but quickly resumed with the introduction of brick and stone veneers, glazed porcelain and natural stone panels, larger glass windows in metal framing with matching doors, and angled entries. Bigger, bolder lighted or neon signs running the length of the building and smaller signs hanging over the sidewalks where they were visible to pedestrians and drivers alike also became common elements. As businesses headed out to the new suburban shopping centers and malls in later years, many received only minor upgrades, one of the most common being new smaller windows triggered by the energy crunch of the 1970s. In recent years, surviving 1950s-era storefronts have come to be equally appreciated for their historic significance, and many have since been preserved. Typical of simpler conversions, buildings like these can still be found along the main and side streets in many communities. Period signs are provided for the finishing touch, and with appropriate vehicles, figures and other details, your finished model fits any era from the 1950s to the present. See your participating dealer, check out the current Walther's Model Railroad reference Book, or visit [walthers.com](http://walthers.com) for additional accessories to complete your model.

## 1) Windows

PLEASE NOTE: We suggest using white glue to prevent damage to window glass. Note that the sketch shows all walls from the interior side; install parts from right to left.

### Front Wall (100):

Lower level; Large Glass (35), Door & Transom Glass (2x 36).

PLEASE NOTE that the center storefront can be built with one of two optional entrances - choose #11 or #105 and glue in place. For both styles, glue Angled Glass (2x 37) to left and right windows and Medium Single Glass (36) to back of door. For #105 only, glue Small Transom Glass (38) above door.

Glue Angled Entrance (104) at far right; glue Small (left) Glass (33), Large (right) Glass (32) in place.

Upper Level; Medium Double Glass (4x 34), Small Glass (3x 31).

### Corner Angled Entrance Wall (101)

Double Door Glass (33), Medium Single Glass (2x 36), Small Façade (107) to inset area above door - see second illustration for placement.

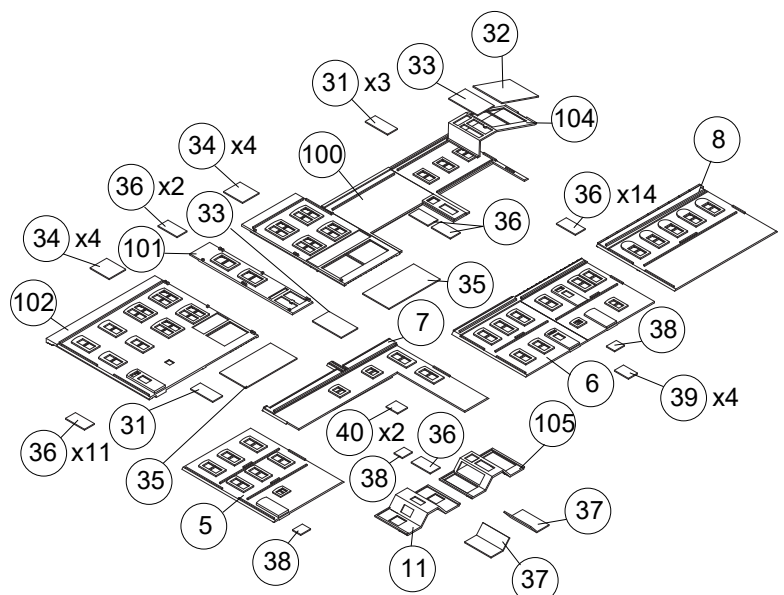
3-Story Side Wall (102) - Medium Single Glass (5x 36), Medium Double Glass (4x 34), Door Glass (31), Large Glass (35)

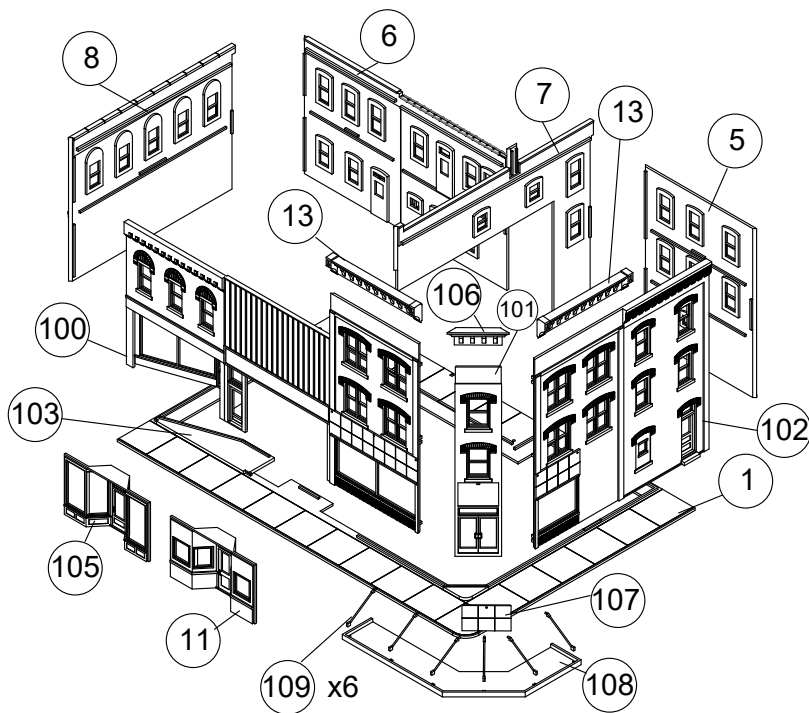
Three-Story Interior Partial Wall (7) - Small Single Glass (2x 40), Medium Single Glass (2x 36).

Three-Story Rear Wall (5) - Medium Single Glass (6x 36), Small Transom Glass (38)

Two-Story Rear Wall (6) - Medium Single Glass (7x 36, upper floor), ground floor - Small Single Glass (4x 39), Small Transom Glass (38).

Two-Story Side Wall (8) - Medium Single Glass (5x 36)





2) Glue Angled Walkway (103) to left front of Base (1) as shown. Using raised ridges on Base, Walkway and tabs and slots on inside edges of Walls (100, 101, 102, 8) to align parts, glue Walls as shown and at inside corners where parts meet. Glue Three-Story Interior Wall (7) to Base, Three-Story Rear Wall and Front Wall. If desired, the printed interiors may be installed at this time. Glue Three-Story Rear Wall (5) and Two-Story Rear Wall (6) in place.

3) Glue Long Cornice (2x 13) to Front Wall and Three-Story Side Exterior Wall. Glue Short Cornice (106) to Front Entry/Corner Wall.

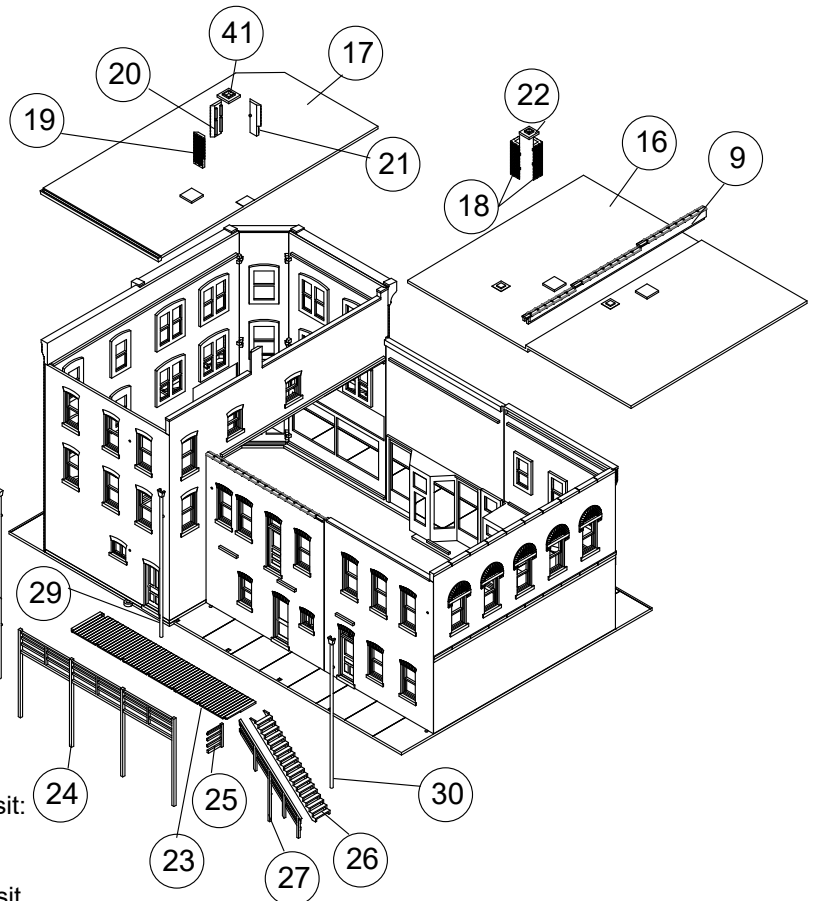
4) Note square tabs on Canopy Supports (6x 109) are the bottom; align with slots on Canopy (108) as shown and carefully glue together. With underside of Canopy on raised ridges above large display windows, align pins on upper end of Supports with openings in walls, and carefully glue where parts meet.

5) Two-story (16) and Three-story (17) Roofs may be set in place if you wish to add lights or details (sold separately), or glued in place. Glue Chimney Walls (19, 20, 21) to raised area on right side of Roof (17) as shown, aligned with molded chimney on wall. NOTE: For a removable roof, Chimney Cap (41) should be glued only to the three chimney walls on roof. Glue Chimney Halves (2x 18) and Chimney Cap (22) to Roof (16). Glue Fire Wall (9) to Roof (16) as shown.

6) Glue pins on Three-Story Scupper and Downspout (28) to left corner and Two-Story Left (29) and Right (30) Scupper & Downspouts to mounting points on Rear Walls as shown. Glue Rear Porch Deck (23) to Porch Railing (24). Glue Completed Porch to Rear Wall. Glue Long Railing (27) to Stairs 26 and to Porch. Glue Small Handrail (25) to Porch Deck and Long Handrail.

### DECALING

1. After cutting out the decal, dip in water for 10 seconds, remove and let stand for 1 minute. Slide decal onto surface, position and then blot off any excess water.
2. Lightly brush Micro Sol® on top. This will soften the decal allowing it to conform to irregular surfaces. DO NOT TOUCH DECAL while wet!
3. When the decal is thoroughly dry, check for any trapped air bubbles. Prick them with the point of a small pin or hobby knife blade and apply more Micro Sol®.



To register your Walthers product, please visit:  
[www.walthers.com/register-your-warranty](http://www.walthers.com/register-your-warranty)

For warranty information on your Walthers product, please visit:  
[www.walthers.com/warranty](http://www.walthers.com/warranty)

For assistance with missing or damaged parts, please visit  
[trains.walthers.com/parts-warranty](http://trains.walthers.com/parts-warranty), call 1-800-4-TRAINS M-F  
from 8:00 AM to 4:30 PM CT, or write to us at Wm. K. Walthers,  
Inc. 5601 W. Florist Ave, Milwaukee, WI 53218. Please be  
aware all inquiries are handled in the order received.