



HO Structure Kit

VINTAGE MOTOR HOTEL

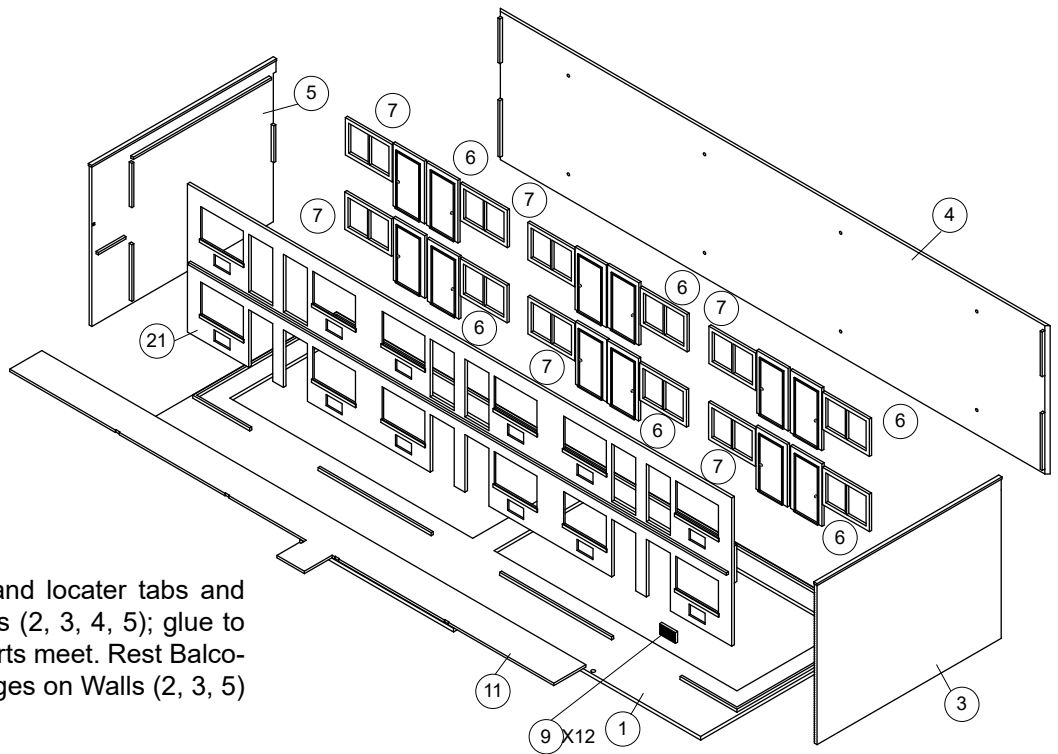
933-3488

Thanks for purchasing this Cornerstone kit. All parts are styrene plastic (unless noted), so use compatible glue and paint to assemble and finish your model. You may find it easier to assemble and paint larger parts as subassemblies; smaller parts can be painted on the sprues and touched-up after installation. PLEASE NOTE: while this kit can be used as a freestanding structure, it matches parts included with Vintage Motor Hotel with Office and Restaurant (#933-3487, sold separately). For ease of layout planning, you may wish to have any additional kits on hand before starting.

As more reliable automobiles and improved all-weather roads appeared in the 1920s, travel by car became increasingly common in many areas. Finding a decent place to stay however presented challenges of its own. Recognizing this trend and the shortcomings of existing facilities, Arthur Heinemann of San Luis Obispo, California, opened a new type of lodging in 1925 designed and built especially for motorists. On a par with a luxury resort – guests paid an incredible \$1.25 per night to stay there - rooms featured showers, central heat, carpeting, a garage - even separate accommodations for your chauffeur! Initially called the Milestone Motor Hotel, the name was shortened to Mo-Tel, and as others copied the idea, "motel" became part of American slang. While the Depression and WWII slowed things down, the industry came roaring back in the 1950s and 60s, as commercial strips quickly appeared on the outskirts of towns of every size. Along with the usual assortment of gas stations and drive-ins, many soon had blocks of family-friendly convenient and affordable motels side-by-side. Like national brands such as filling stations that used the same architecture and corporate colors, motels shared the basics of a separate office, blocks of rooms, and ample parking. But as owners were independent local businessmen the sky was the limit when it came to outdoing the competition. Catchy names blazed from huge neon signs that promised everything from in-room phones to air conditioning and color TV at a time when they were still something of a luxury. Buildings and interiors were finished in vivid colors, often based on popular themes that ran the gauntlet from the Wild West to the Hawaiian Islands. As a convenience to guests and a second source of income, many expanded to include a family-friendly "sit-down" restaurant on the property as well. The mid-1960s began an era of rapid change. Independent hotels became part of national chains, often in new standardized buildings constructed alongside interstate off ramps, where guests were assured of the same quality stay whether they spent the night in Walla Walla or Washington D.C. With less traffic, older properties became more desirable for single-family houses, and bulldozers made short work of existing motels and other commercial structures. Others hung on, often renting rooms by the week, or converting into low-cost efficiency apartments. Today, some are not only still in operation along once-busy thoroughfares, they've been modernized and updated to offer a unique change from the bigger chains. On your layout, your new model is an icon of the 1950s and 60s that's instantly recognizable to anyone who traveled in that era, and is designed to simplify expanding the matching Vintage Motor Hotel with Office and Restaurant (#933-3487, sold separately). In a newer setting, it can easily be used as an apartment complex, with the office and restaurant repurposed by other small businesses. For additional figures, period vehicles, scenery materials and more, see your participating dealer, check out the current Model Railroad Reference Book, or visit us online at walthers.com

1) Glue Windows (12x 8) to recessed areas on back of Front Wall (2). Acetate is provided for "glass;" cut each piece slightly large than the window and glue in place with white glue. PLEASE NOTE: While they look similar, note the location of doorknobs on Left (6x 7) and Right (6x 6) Doors. Align parts as shown and glue Doors to openings from the inside. Glue Air Intakes (12x 9) to recessed areas below each window. This is a good time to install the printed curtains if desired. Carefully cut from printed sheets and secure behind glass with tape or white glue.

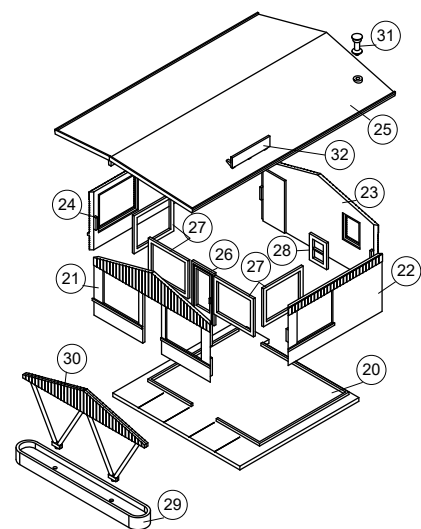
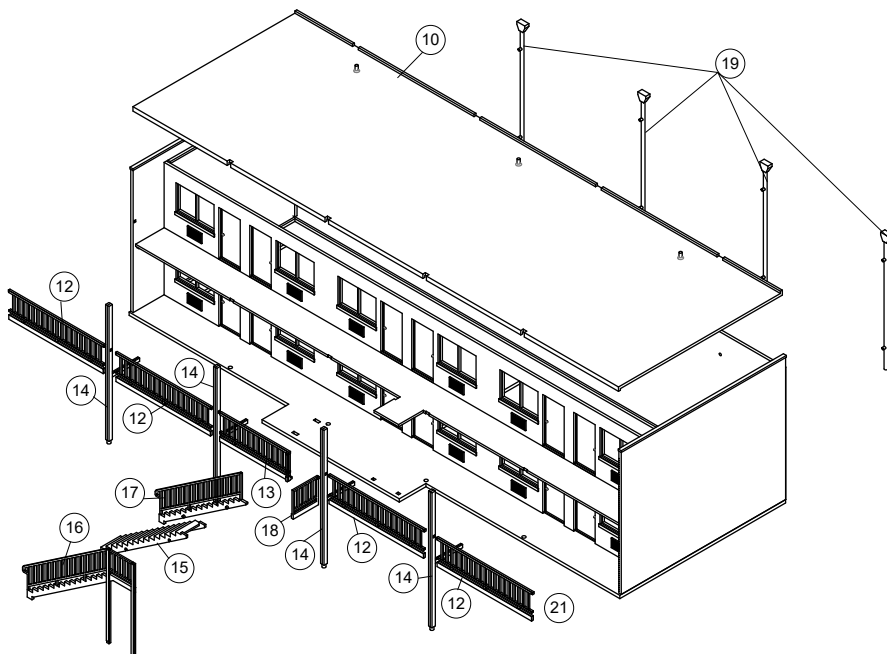
2) Use raised ridges on Base (1) and locator tabs and slots on inside corners to align Walls (2, 3, 4, 5); glue to base and at inside corners where parts meet. Rest Balcony Walkway (11) on top of raised ridges on Walls (2, 3, 5) and glue where parts meet.



3) Align raised ridges on front and back of Roof (10) inside Rear (4) and Front (2) Walls as shown, and glue from inside where parts meet. PLEASE NOTE: one side of each Support Column (4x 14) has an inset notch that fits openings on Balcony Walkway. Be sure parts are aligned correctly, insert pins on bottom of Columns to openings in Base, Balcony Walkway and front edge of Roof and carefully glue where parts meet.

4) PLEASE NOTE: Each Large (4x 12) and Small (13) Balcony Railing has a raised locating ridge along the lower edge and the Small Railing also has a small tab at the right end; when cutting parts from sprues, do not remove these details. Glue raised ridge on bottom of each L-shaped bracket to underside of Balcony Walkway, starting with Large (12) Railings at left and right as shown and to Side Walls and Columns where parts meet. Short Railing 13 fits between second Column from left, with tab in recessed area of Walkway. Align as shown and glue where parts meet.

5) Align pins and raised locating ridge on Left (17) and Right (16) Railings with Stairs (15) and glue where parts meet. PLEASE NOTE: When installing assembled Stairs, note that top stanchion of Railing #16 fits to the right of the last stanchion on #13, in the recessed area on the Walkway. Align lower end in mounting points on Base, and upper end of completed Stairs to right underside of extended platform on Balcony Walkway, and glue where parts meet. Align raised locating ridge on End Railing (18) with underside of platform and Railings, and glue where parts meet. Align pins on Downspouts and Scuppers (4x 19) with openings in Rear Wall and glue from inside.



FRONT OFFICE

Glue Large Windows (2x 27) and Front Door (26) to recessed areas on back of Front Wall (21). Glue a Large Window to recessed areas on back of Right (22) and Left (24) Side Walls. Glue Small Window (28) to recessed areas on back of Rear Wall (23). Acetate is provided for "glass;" cut each piece slightly large than the window/s and glue in place with white glue.

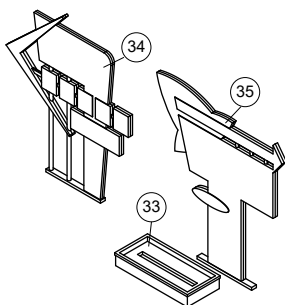
Use raised ridges on Base (20) and tabs and slots on backs of Walls (21, 22, 23, 24) to align parts and glue to Base and at inside corners where parts meet.

Glue Pins on Canopy Support (30) to openings in Canopy Base (29). Align top of Support with raised ridges on front underside of Office Roof (25) and glue in place.

Glue Smokejack (31) to mounting point on Roof (25). Sign (32) can be placed on left or right (shown here) of front overhang, facing oncoming traffic. Completed Roof can be set in place to add lights or interior details (sold separately) or glued in place.

ROADSIDE SIGN

Parts to build your choice of one of two large signs typical of the era are included, along with full-color decals. Because of their size, you may find it easier to apply decals before assembling the sign. Choose one and align flat bottom of either #34 or #35 with recessed area in Sign Base (33) and glue where parts meet.



Decaling

1. After cutting out the decal, dip in water for 10 seconds, remove and let stand for 1 minute. Slide decal on to surface, position and carefully blot off any excess water.
2. Lightly brush Micro Sol® on top. This will soften the decal, allowing it to conform to irregular surfaces. DO NOT TOUCH DECAL while wet!
3. When decal is thoroughly dry, check for any trapped air bubbles. Prick them with the point of a small pin or hobby knife blade and apply more Micro Sol®.

SIGNS

To mount signs, simply cut the desired image and, using a small drop of white glue on the back, glue it in place on the structure.