



# H0 Scale Structure Kit

## UTILITY AUGER

933-4183

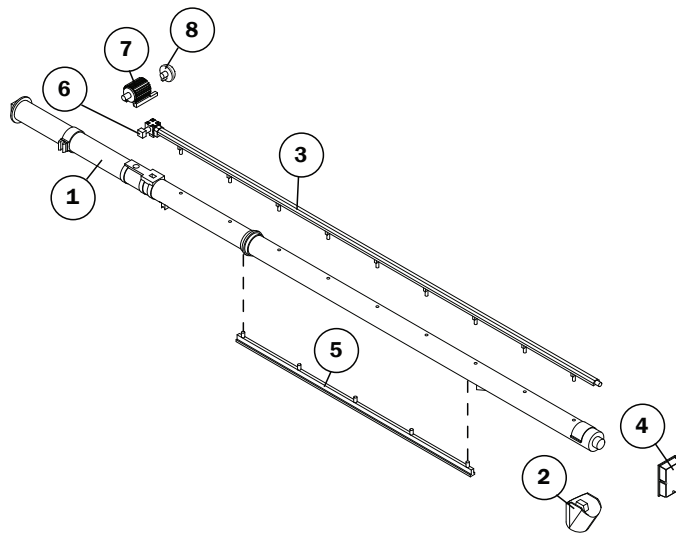
Thank you for purchasing this Cornerstone Series kit. Please study the instructions and drawings before starting. All parts are styrene plastic, so use compatible glue and paint to assemble your model.

Utility Augers are a common sight at transload facilities and rural communities across America. Used primarily for transferring grain they can also be used for just about any pelleted or granulated product that can be moved by an auger-type mechanism. You can paint your auger to match a particular prototype or freelance a paint scheme to match an existing industry.

NOTE: This kit has been designed to be posed in a raised or lowered position. This allows you to utilize the model at a transload facility or being towed behind a truck by adjusting the height. Of course, you can glue it all together if you're set on one fixed position, but pay careful attention to the instruction steps if you wish the model to remain poseable.

Take time to familiarize yourself with the many small parts included in this kit. Work carefully, removing from the sprue only the parts you need for the next step, then dry-fitting each part in place before gluing parts together. Apply glue sparingly using only enough to get the job done.

Ready? Let's get started.

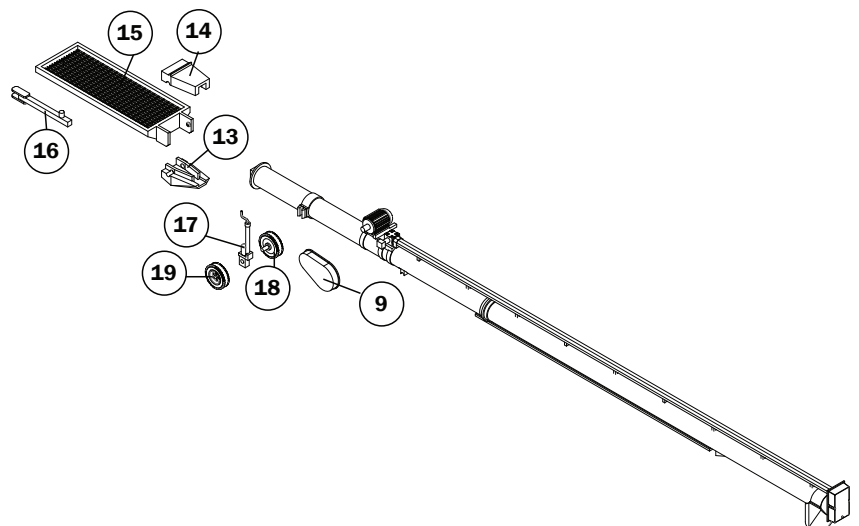


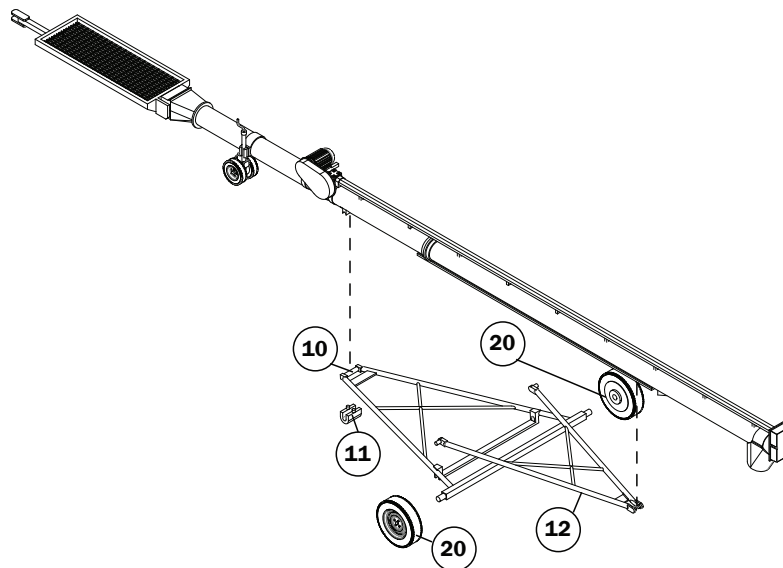
### MAIN AUGER TUBE

1. Assemble the Auger body by gluing the driveshaft (3) onto the auger tube (1) aligning the pegs with the holes as shown.
2. Glue the top gearbox (4) to the end of the auger tube and driveshaft.
3. Glue the drive gearbox (6) to the driveshaft (3).
4. Assemble the motor core (7) by gluing on the motor vent (8) then glue this assembly to the auger tube behind the driveshaft.
5. Turn the auger tube over and glue the carriage frame slide (5) and the end chute (2) to the auger tube.

### HOPPER AND LANDING GEAR

1. Glue the trailer tongue (16) to the bottom of the hopper (15).
2. Glue the landing gear wheels (18, 19) to the landing gear (17) after first inserting the landing gear wheel with the axle (18) through the landing gear. Set aside to dry.
3. Glue the belt shield (9) to the motor and gearbox as shown on the diagram.
4. Glue the two halves of the hopper feed (13, 14) around the square peg at the bottom end of the auger tube. DO NOT glue this assembly to the hopper if you want the model to remain poseable.
5. Once the landing gear has dried you can press it into place in the clip on the auger tube according to the diagram.

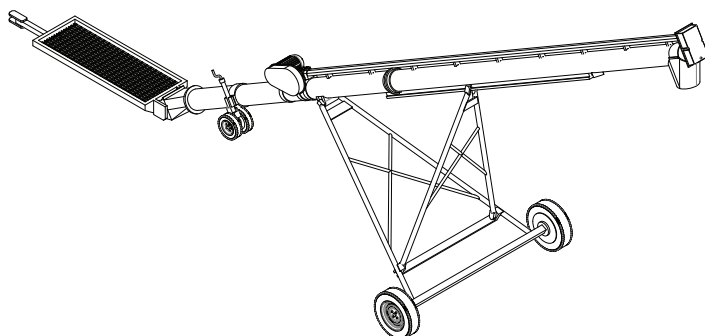




#### UNDERCARRIAGE

1. Glue the wheels, (2x 20) to the rear undercarriage frame (10).
2. Test fit the pegs on the front undercarriage frame (12) into the holes on the rear undercarriage frame, one at a time. If they fit as desired, gently squeeze the arms of the front undercarriage frame and insert both pegs into the holes.
3. Place the wheel frame hinge bracket (11) over the narrow end of the rear undercarriage frame (10) as shown on the diagram. SPARINGLY apply glue to the pegs on the bracket and glue it in place on the underside of the auger tube, taking care to not get any glue on the rear undercarriage frame itself. Once this is dry proceed to the next step.
4. Slip the small pegs on the end of the front undercarriage frame (12) over the carriage frame slide (5).
5. Snap the hopper feed (13, 14) into the hopper (15).

Your Utility Auger is now ready for transloading grain or other pelleted products on your railroad! Be sure to check out the many Transload Facility kits available from Walthers Cornerstone.



To register your Walthers product, please visit:  
[www.walthers.com/register-your-warranty](http://www.walthers.com/register-your-warranty)

For warranty information on your Walthers product, please visit:  
[www.walthers.com/warranty](http://www.walthers.com/warranty)

For assistance with missing or damaged parts, please visit  
[trains.walthers.com/parts-warranty](http://trains.walthers.com/parts-warranty), call 1-800-4-TRAINS M-F  
 from 8:00 AM to 4:30 PM CT, or write to us at Wm. K. Walthers,  
 Inc. 5601 W. Florist Ave, Milwaukee, WI 53218. Please be aware  
 all inquiries are handled in the order received.