



HO Structure Kit  
**CULVER'S®**  
933-3486

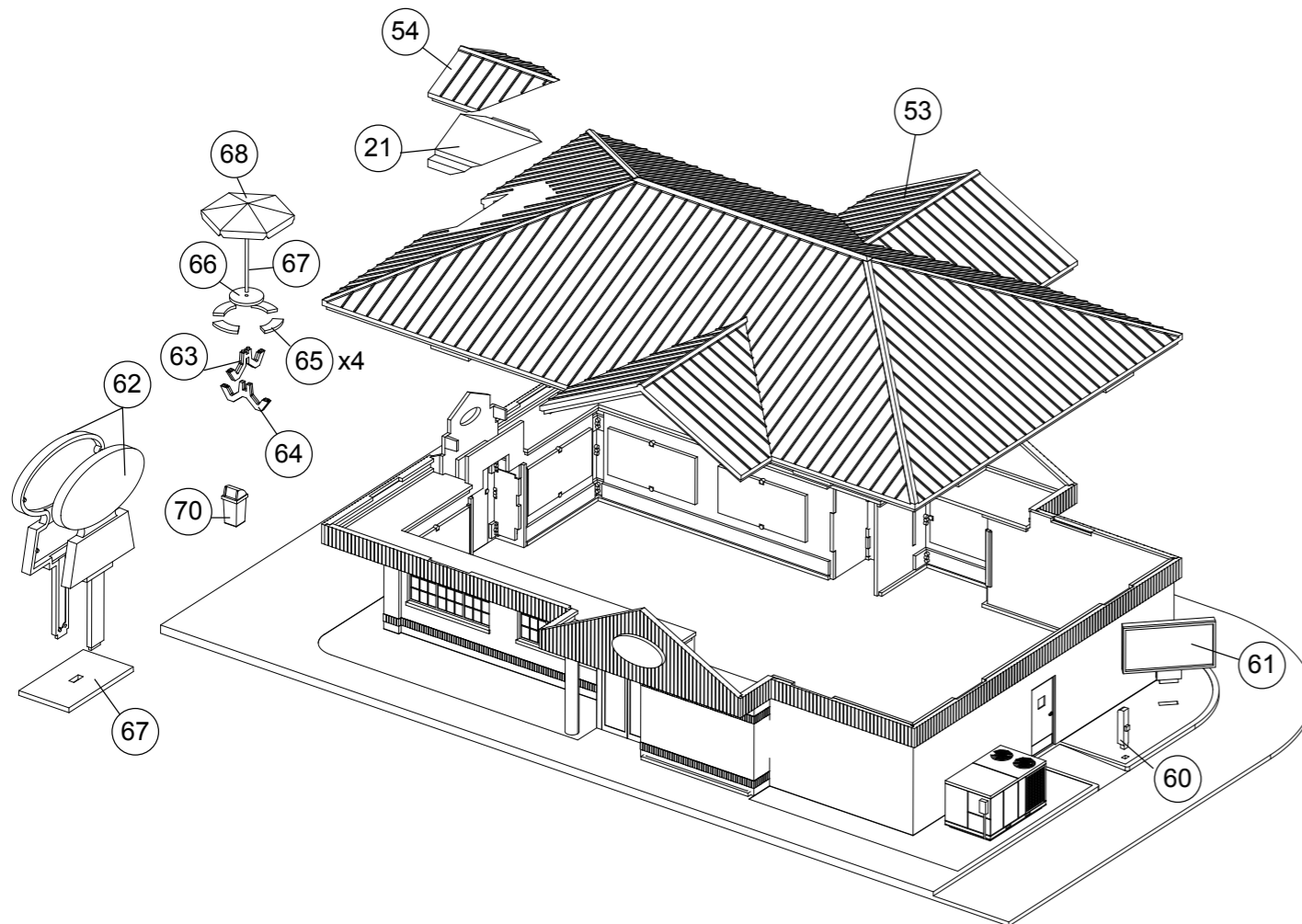
16) Note the opening in the front of the Main Roof (53); align Front Dormer Base (21) with opening and inset area on Main Roof and glue together. Complete assembly by gluing Dormer Roof (54) to Dormer Base. The Main Roof can be set in place to add lights or interior details (sold separately) or glued in place as desired.

17) Glue Drive-Through Speaker (60) and Menu Board (61) to Base as shown.

18) Glue Street Sign Halves (2x 62) together, and to Sign Base (67). Finished sign can be installed at any convenient spot on your layout.

19) Parts are included to assemble three outdoor tables as follows: insert Table Base (63 with mounting points) into top of Plain Base (64) as shown. Align tabs on completed seat bases with openings on underside of Seats (4x 65) and glue together. Align pins on Table Base with openings in underside of Table Top (66) and glue together. Glue Umbrella Pole (67) to opening in underside of Umbrella (68) and glue completed umbrella to opening in Table Top.

20) Trash Receptacles (3x 70) can be glued anywhere on the Base; typically one is placed near each entrance/exit and the outdoor seating area.



Thanks for purchasing this Cornerstone kit. All parts are styrene plastic, so use compatible glue and paint to assemble and finish your model. Please take a few minutes to read these instructions and study the drawings before starting construction. If you wish to paint any parts, you may find it easier to do so before starting construction, or assemble and paint related parts as subassemblies.

It's no surprise that two of Craig Culver's favorite foods growing up in Wisconsin were his mom's fresh-made hamburgers and frozen custard! Those childhood memories, and hands-on experience working in his parent's supper clubs as a teenager led him to open the very first Culver's in the family's hometown of Sauk City, Wisconsin, in 1984. With a much wider selection than a typical drive-in, and every entrée made fresh to order, that single restaurant soon grew into a popular chain. Today, you can enjoy signature ButterBurgers, tasty custard treats and much more at one of nearly 600 locations in 24 states, with more on the way! Based on a standard design that's right at home in the commercial area of a small town or big city, your new model fits any layout from the mid-1980s to the present. To bring your new Culver's to life with figures, signs, vehicles and more, see your local hobby shop, check out the latest Walthers Reference Book, or visit us online at walthers.com.

### DOORS AND WINDOWS

Dining Room Alcove: Front Wall with Sign (3), Large Front Window (37), Right (4) and Left (5) Windows, Front Windows (2x 38).

Front Dining Room Wall (2): Large Horizontal Windows (2x 39), Front Trim Panels (2x 44)

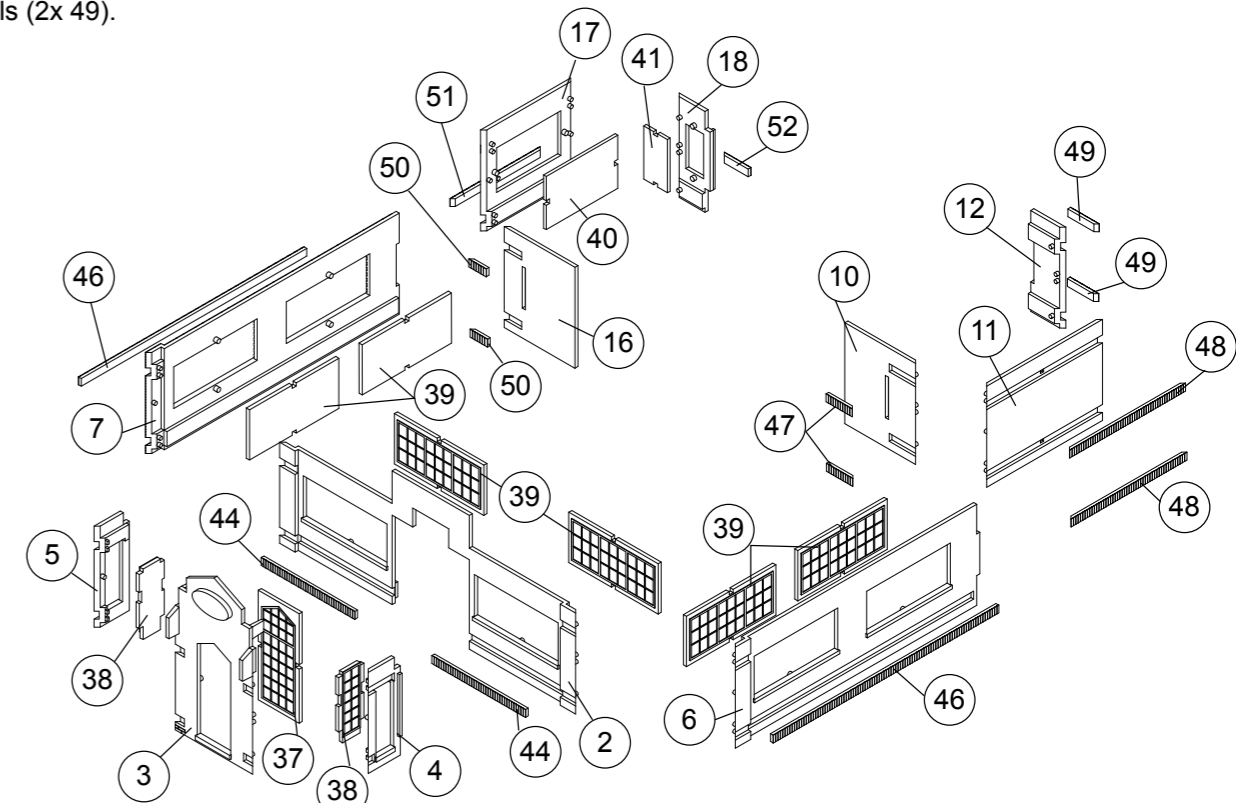
Right (6) and Left (7) Dining Room Walls: Large Horizontal Windows (2x 39 two per side), Side Trim Panel (46; 1 per side).

Right Entryway Wall (10): Small Trim Panels (2x 47).

Left Entryway Wall (16): Small Trim Panels (2x 50).

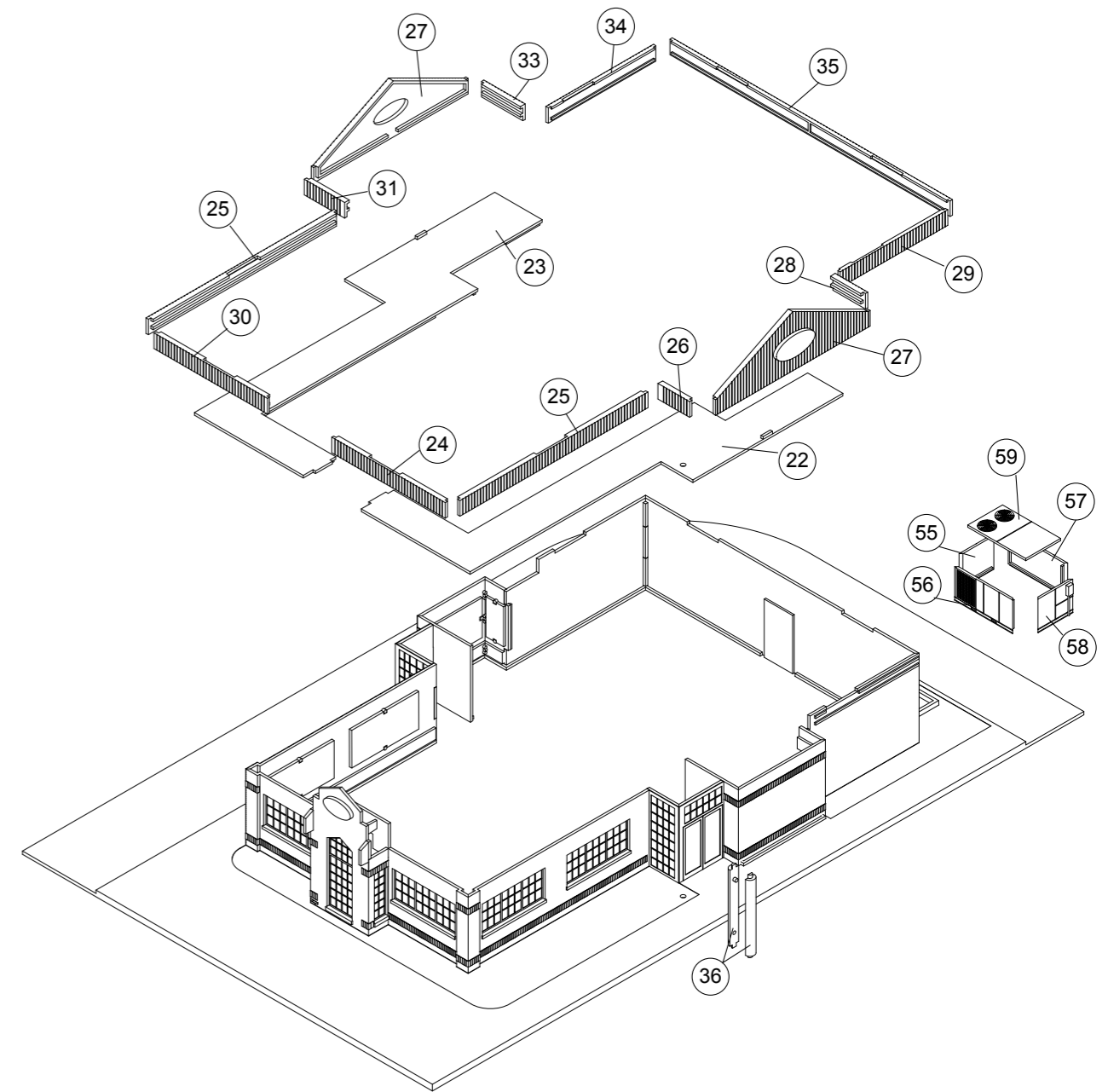
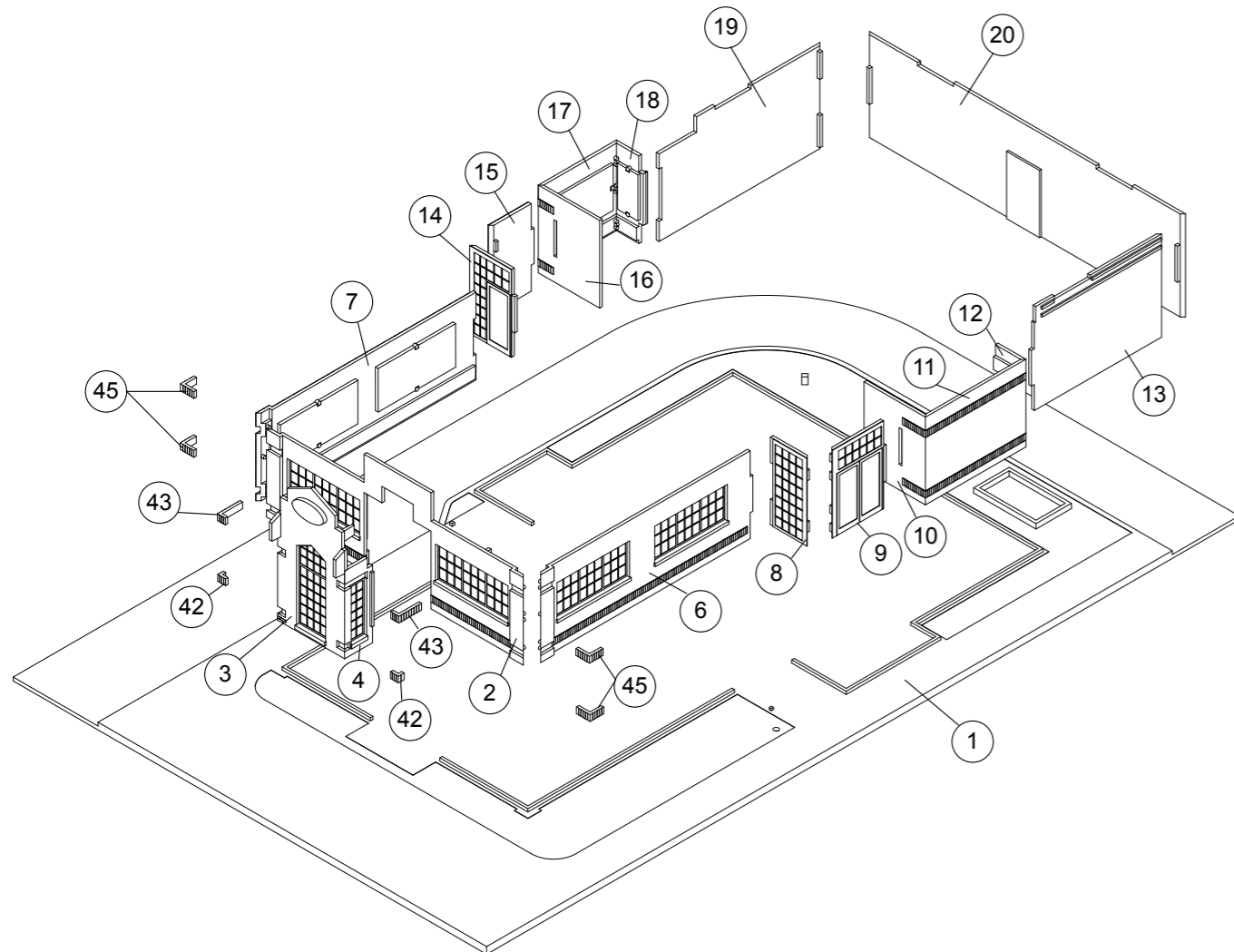
Drive-Through Window: Large Wall (17): Large Glass (40), Trim Panel (51). Small Window (18), Small Glass (41) Small Trim Panel (52)

Small Right Side Front Wall (11): Trim Panels (2x 48). Small Inset Right Wall (12), Trim Panels (2x 49).



PLEASE NOTE: For this step, completed wall assemblies with windows and/or doors are identified by a single part number – please refer to the drawings.

- 1) Align tabs on Rear Kitchen Wall (20) with openings in Right (13) and Left (19) Kitchen Walls; glue at inside corners where parts meet and to raised ridge on Base (1).
- 2) Align tab on Right Kitchen Wall (13) with opening on Small Inset Right Wall (12); glue at inside corners where parts meet and to raised ridge on Base.
- 3) Align tabs on Small Right Side Front Wall (11) with Small Inset Right Wall (12) and Right Entryway Wall (10); glue at inside corners where parts meet and to raised ridge on Base.
- 4) Align tabs on Right Entry Door (9) with opening in Right Entryway Wall (10), and Right Entry Window (8); glue at inside corners where parts meet and to raised ridge on Base.
- 5) Align tab at right of part 6 with notch on Right Entry Window (8), and glue Right Dining Room Wall (6) at inside corner where parts meet and to raised ridge on Base.
- 6) Align pins and mounting points on inside corners of Front (2) with Right (6) and Left (7) Dining Room Walls; glue at inside corner where parts meet and to raised ridge on Base.
- 7) Align tabs on Left Glass Entryway (14) with openings in Left Dining Room Wall, Left Small Entry Wall (15) and Drive-Through Wall (16); glue at inside corner where parts meet and to raised ridge on Base.
- 8) Align mounting points on Large Window (17) with inside corners of Drive-Through Wall (16), Small Window (18) and align tab on Small Window with Left Kitchen Wall (19); glue at inside corner where parts meet and to raised ridge on Base.
- 9) Align inside corners of Alcove Right (4) and Left (5) Windows with Front Wall with Sign (3) and Front Dining Room Wall (2); glue at inside corner where parts meet and to raised ridge on Base. Glue Lower (2x 42) and Upper (2x 43) Alcove Wall Trim at left and right corners as shown.
- 10) Glue Upper and Lower Corner Wall Trim (2x 45; 2 per corner) to openings at left and right dining room corners as shown.



11) Use the molded pins to align and glue Canopy Support (2x 36) halves together as shown.

12) Use the raised ridges molded on the underside to align parts and glue Right (22) and Left (23) Soffits to top of wall assembly. Align pins on Canopy Support with openings in Right Soffit and Base and glue together.

13) PLEASE NOTE: The back of each Fascia Panel has two ridges to align parts; the bottom ridge is offset from the edge and rests on the top of the Soffit so that the Fascia Panel overhangs the Soffit. The large gaps identify the top edge and are used to align large tabs on the underside of the Main Roof in step 16.

**Right Soffit (22) Fascia Panels:**

Glue Right Front (24) and Right Dining Room (25) panels in place. Align small tab on back of Sign Panel (27) with tab on Soffit and glue together. Complete assembly by gluing Right Entry Front (26) and Rear (28) Panels to Soffit, Sign Panel and inside corners where panels meet.

**Left Soffit (23) Fascia Panels:**

Glue Left Front (30), and Left Dining Room (25) panels in place. Align small tab on back of Sign Panel (27) with tab on Soffit and glue together. Complete assembly by gluing Left Entry Front (31) and Rear (33) Panels to Soffit, Sign Panel and inside corners where panels meet.

14) Glue Right (29) and Left Kitchen (34) Fascia Panels to molded ridges above brick detail on Right (13) and Left Kitchen Wall (19) respectively; align the large spaces in the top locating lines with the notches on the top edges of the walls. Complete assembly by gluing Glue Rear Fascia Panel (35) to molded ridges at top of Rear Wall (20) and at inside corners where panels meet.

15) PLEASE NOTE: Air Conditioner Sidewalls have raised ridges on three sides; during assembly, be sure the plain edge is at the top. Use raised ridge on Base to align parts and glue Left (55), Rear (56), Front (57) and Right (58) Air Conditioner Sidewalls to base and at inside corners where parts meet. Align ridges on underside of Air Conditioner Top (59), and glue to completed Sidewalls assembly.