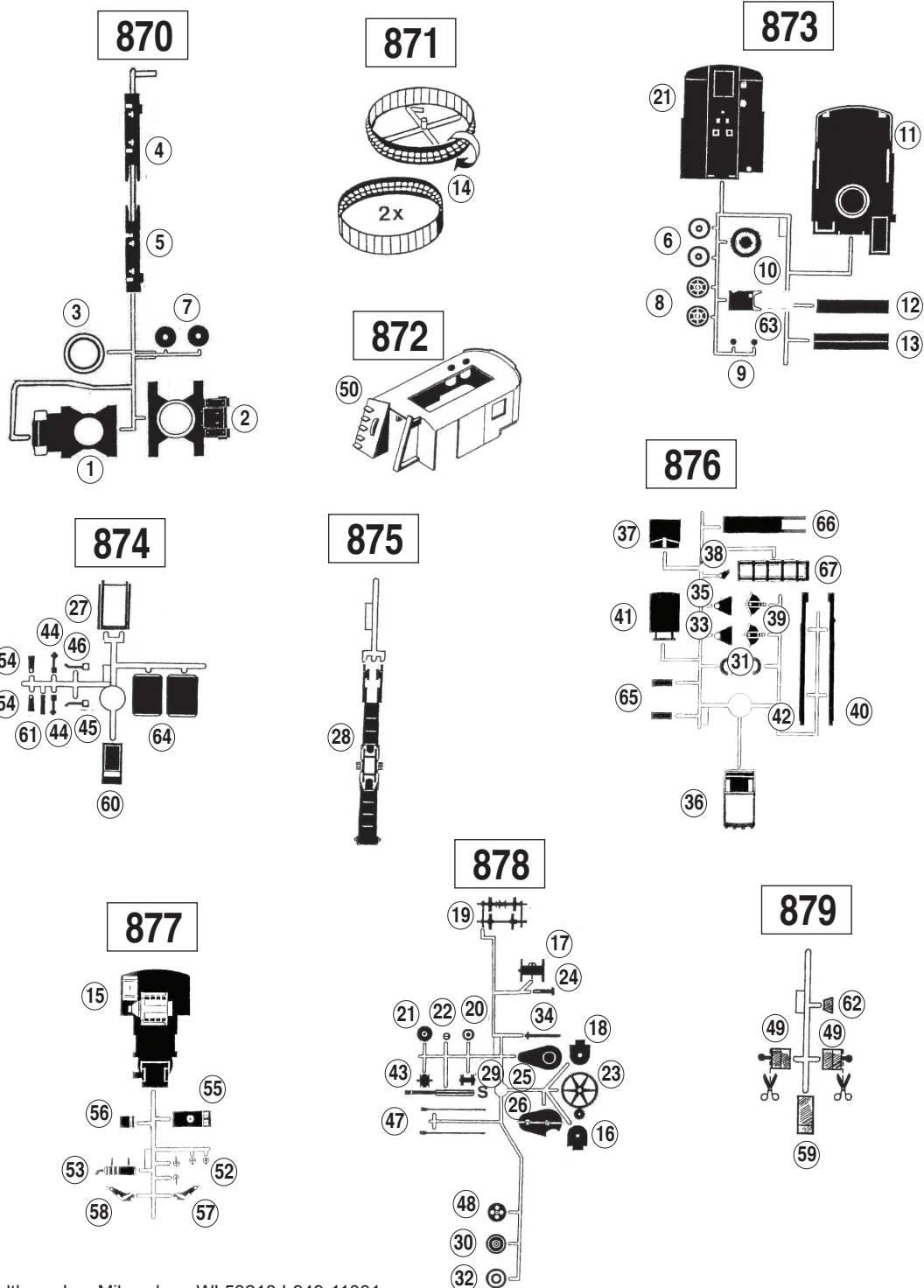


Thanks for purchasing this Walthers SceneMaster kit. All parts are styrene, so use compatible glue and paint to assemble and finish your model. PLEASE NOTE: Parts are assembled in numerical sequence: #1 to #2, #1 & 2 to #3 etc. With careful assembly, several parts are positionable; parts marked * snap in place, but may be glued if desired. Please take a few minutes to read these instructions and study the drawings. Individual parts are not numbered on sprues; use the diagram below to identify parts during assembly.

Tracing their origins to the first steam shovels of the 1800s, gasoline and later diesel-powered cable excavators were standard heavy equipment well into the 1970s and beyond. Using a series of clutches, gears and chains, the operator could engage winding drums to tighten or loosen wire ropes ("cables"), rotate the cab, or move the machine as needed. Many were set up to work various attachments, including a shovel as depicted by this model. Sturdy crawler tracks allowed for sure-footed off-road operation in a variety of settings ranging from construction projects to mines and quarries. For additional products to complete your model, see your participating hobby dealer, check out the latest Walthers Model Railroad Reference Book or visit us online at walthers.com.



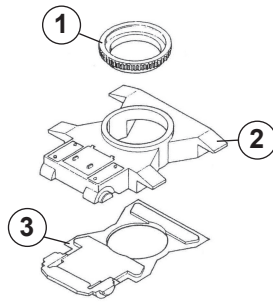
Underframe Assembly

1) Glue Turntable (1) to Upper Frame (2) and glue completed assembly to Lower Frame (3).

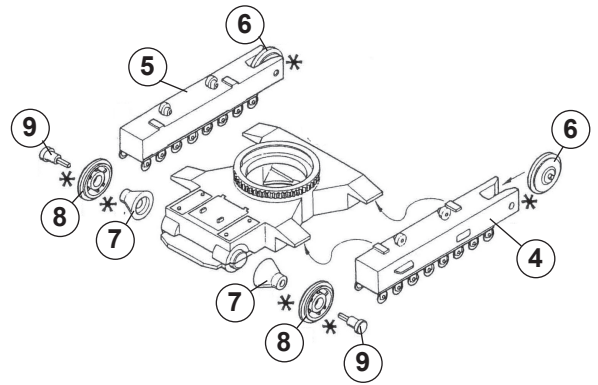
2) Track Frames - Make 2: Insert - do not glue - pins on Idlers* (2x 6; one each side) into openings on rear of Right (4) and Left (5) Track Frames. Glue Drive Wheel Mounts (2x 7: one each left and right) to raised area on front of Frame. Push - do not glue - Shafts* (2x 9) through Drive Wheels* (2x 8) and into openings in Mounts. Glue completed Drive Frames to left and right as shown.

3) Insert - do not glue - Turntable Pin* (10) through Frame and clip to Deck (11). Glue Front (12) and Rear (13) Counterweight together and to mounting points on Deck.

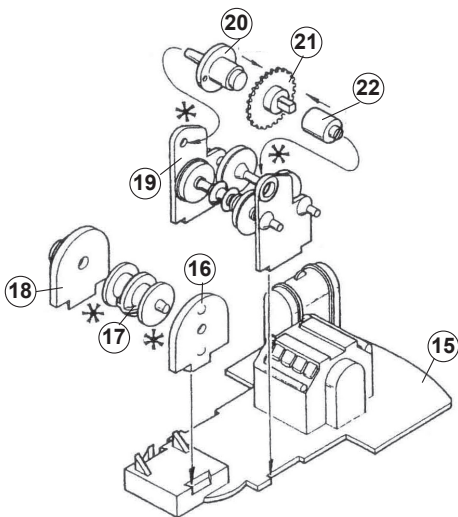
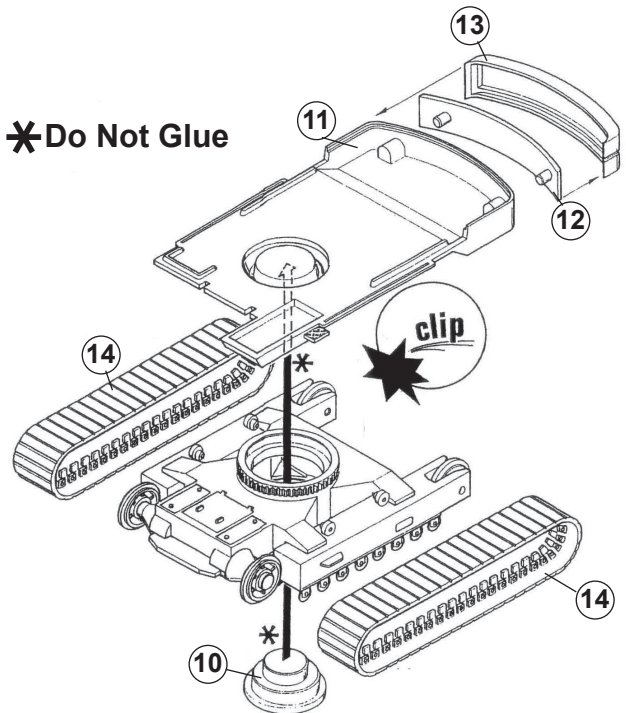
4) Carefully remove sprue from center of Track (2x 14) and turn inside out. Carefully thread center guides over Sprocket and Idler, resting on the upper carrier rollers and bottom rollers molded on Drive Frames



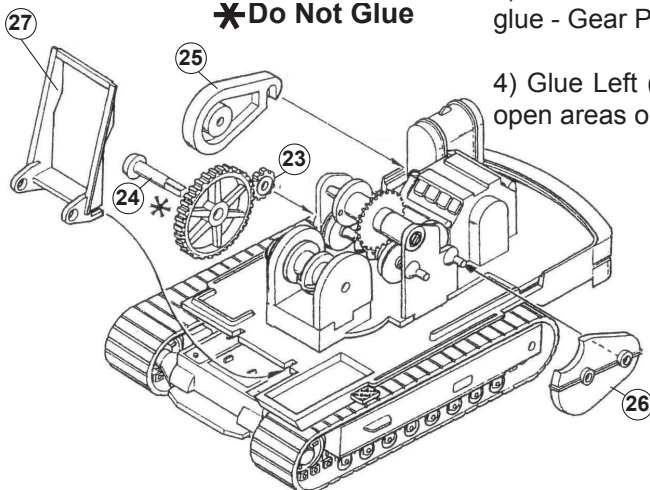
***Do Not Glue**



***Do Not Glue**



***Do Not Glue**



Machinery House Interior Assembly

PLEASE NOTE: All Winding Drums are designed to be moving parts.

1) Note raised area on front of Floor (15); insert - do not glue - Cable Drums* (17) into openings in Right (16) and Left (18) Cable Sideframes; glue Sideframes to Floor as shown.

2) Glue Boom Sideframe (19) to inset area on Floor as shown. Glue parts #20, #21 & #22 as shown to build the Boom Drum; insert - do not glue - completed Drum into openings in Boom Sideframe.

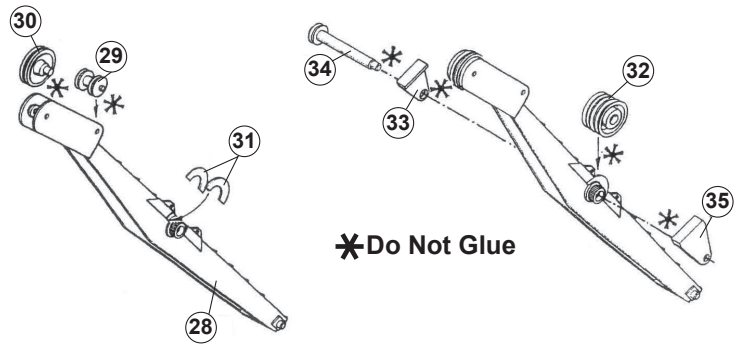
3) Glue Pinion Gear (23) to mounting point on Boom Sideframe. Insert - do not glue - Gear Pin (24) through Gear and Drum Sideframe as shown.

4) Glue Left (25) and Right (26) Transmission Covers to Sideframes. Insert open areas on Mounting Frame (27) into openings on Frame and glue in place.

Boom Assembly

1) Insert - do not glue - Small Cable Guide Pulley* (29) and End Pulley* (30) to openings at top of Boom (28). Glue Links (2x 31) to left and right of Boom as shown.

2) Insert - do not glue - Large Cable Guide Pulley* (32) to openings in Boom. Align Left* (33) and Right (35) Dipper Hinges with opening in Boom and secure by pushing Hinge Pin* (34) through all parts.

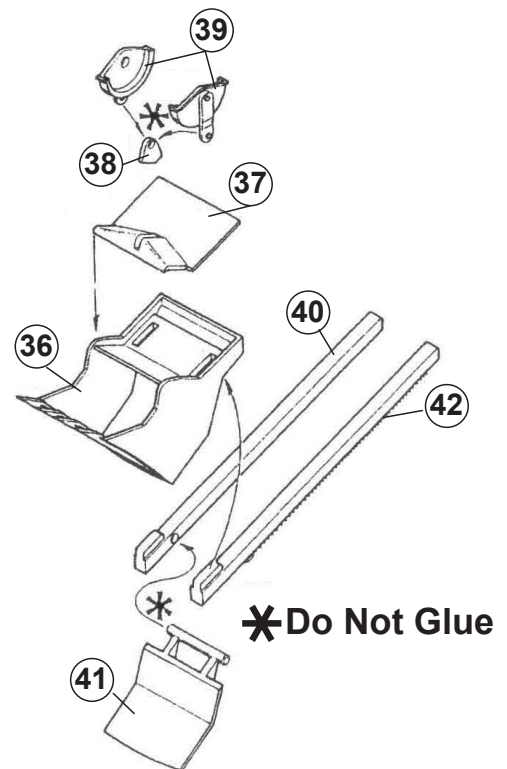


*Do Not Glue

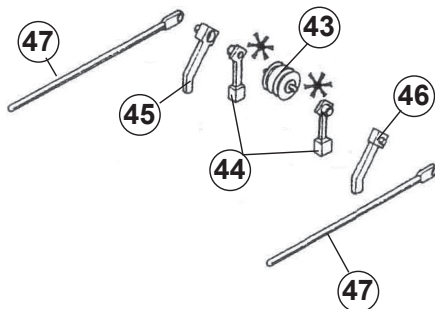
Dipper & Bucket Assembly

1) Glue Dipper Arm Shield (37) to rear of Bucket (36). Carefully insert - do not glue - pins on lower end of Lift Bar Pulley Housing (2x 39) through Pulley Mount (38); apply a bit of glue to the upper edges of the Housings and glue the Mount to the opening in the Cover.

2) Note the raised ridges at one end of the Left (40) and Right (42) Dipper Arms; align with openings on underside of Bucket and glue in place. Insert pins - do not glue - on Bucket Door (41) into openings on Dipper Arms.



*Do Not Glue



Machinery House Mast Hanger & Roof Details Assembly

Refer to sketch on page 3 for placement on Machinery House Roof.

1) Note square mounting pins on bottom of Hanger Supports (2x 44) and glue to flush square mounting points on Roof (51).

2) Insert - do not glue - Hanger Cable Guide (43) to upper openings in Supports.

3) Glue Left (45) and Right (46) Hanger Braces to outside edges of Supports and to raised mounting points on Roof.

4) Glue Arm Braces (2x 54) to inset area at front of Roof. Thread ends of Hangar Arms (2x 47) through openings in Arm Braces at front and over pins on outside of Hanger Braces at rear as shown and glue in place.

5) Glue Spotlight (52) to opening at front left and Muffler (53) to openings at left rear on Roof.

6) Glue Glass (2x 49) from inside to openings in Machinery House (50). Glue completed Roof (51) to opening at top of Machinery House.

Rigging

PLEASE NOTE: We suggest simply setting the Machinery House in place on the deck for easier access to the drums and cables during this step. Cables should be temporarily attached to the drums so they can be adjusted as needed. Once you are satisfied with the operation, the cables and Machinery House may be glued in place if desired. Work slowly and study the drawings before starting.

A) Dipper Rigging - Short Cable #1 14" (40cm) Long

1) Insert one end of the Short Cable into the opening of the Cable Drums (17) and tie in in place.

2) Run cable over End Pulley (30) on boom. Make a loop over the Lift Bar Pulley (48). Run remaining cable down left side of End Pulley and Small Guide Pulley.

3) Thread cable over each groove of Large Cable Guide Pulley (32).

4) Thread remaining cable back to Drums (17), wrap excess cable on drum and secure in place.

5) Insert - do not glue - pins on Lift Bar Pulley* (48) to openings in Lift Bar Pulley Housing, and Dipper Arms* to Hinges* on Boom as shown.

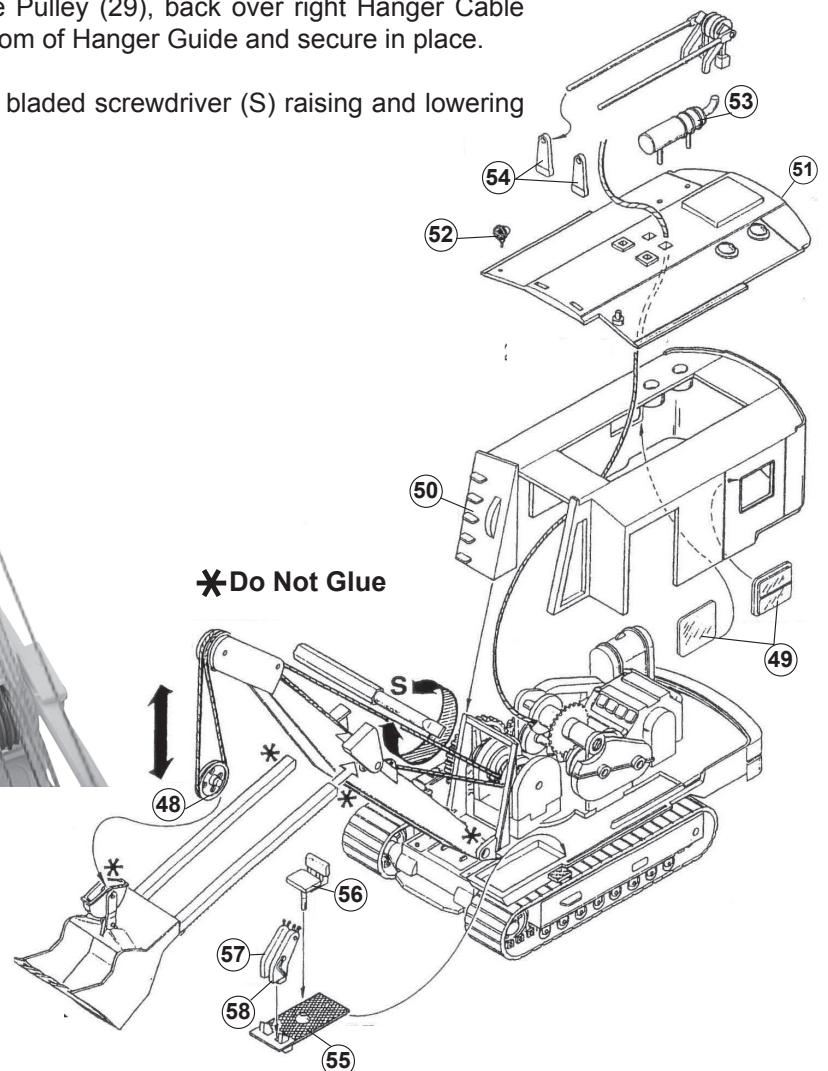
B) Boom Rigging - Long Cable #2 20" (52cm) Long

1) Insert one end of the Long Cable into the opening on the left side of part #20 on the Boom Drum (part #20) and secure in place.

2) Thread Cable through opening in Roof (51) and over top left of Hanger Cable Guide (43).

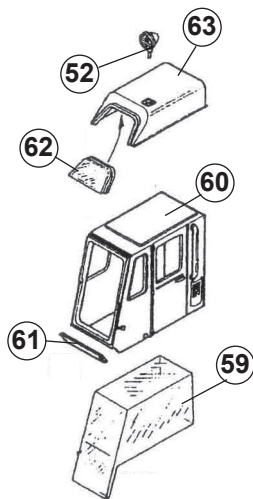
3) Run cable over left pulley of Small Cable Guide Pulley (29), back over right Hanger Cable Guide, back through right pulley on #29, back to bottom of Hanger Guide and secure in place.

The cable drums can be turned using the small flat bladed screwdriver (S) raising and lowering the Boom and/or Dipper Arm as needed.



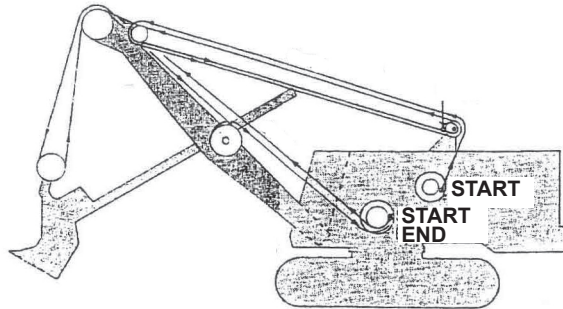
Cab Interior

1) Glue Seat (56) to Cab Floor (55) and Left (57) and Right (58) Control Arms to Floor as shown. Glue completed cab interior to Deck.



Cab

1) Insert Cab Glass (59) to Cab (60) and glue in place. Glue Cab Front (61) below glass as shown. Glue Spotlight (52), and Small Cab Glass (62) to Roof (63). Glue completed Roof to Cab and set aside for installation in step 3 below.



Final Assembly

1) When you're satisfied with the operation and/or position of the Boom and Dipper Arms, Machinery House may be glued to Deck or set in place.

2) Glue End Guards (2x 65), Upper (66) and Lower Boom Bracing (67) to Boom as shown.

3) Glue Completed Cab to Deck.

4) Insert - do not glue - Doors (2x 64) to door tracks on side of Machinery House; these may be open or closed as desired.

