



N Structure Kit MODERN SUBURBAN STATION 933-3887

Thanks for purchasing this Cornerstone kit! All parts are styrene plastic, so use compatible paint and glue to finish and assemble your model. If desired, you may find it easier to assemble and paint some larger parts as subassemblies, while smaller parts can be painted on the sprue for ease of handling, then touched up after assembly. Please take a few minutes to study the drawings and read the instructions before starting. For a complete station scene, check out the Parking Lot (#933-3886), and Butterfly Station Platforms (#933-3285) both sold separately; you may wish to have these kits on hand before Starting construction to help plan and/or adjust your track arrangement and other layout features. PLEASE NOTE: Some parts are included that will not be used with this kit; keep them for future projects or discard them as desired.

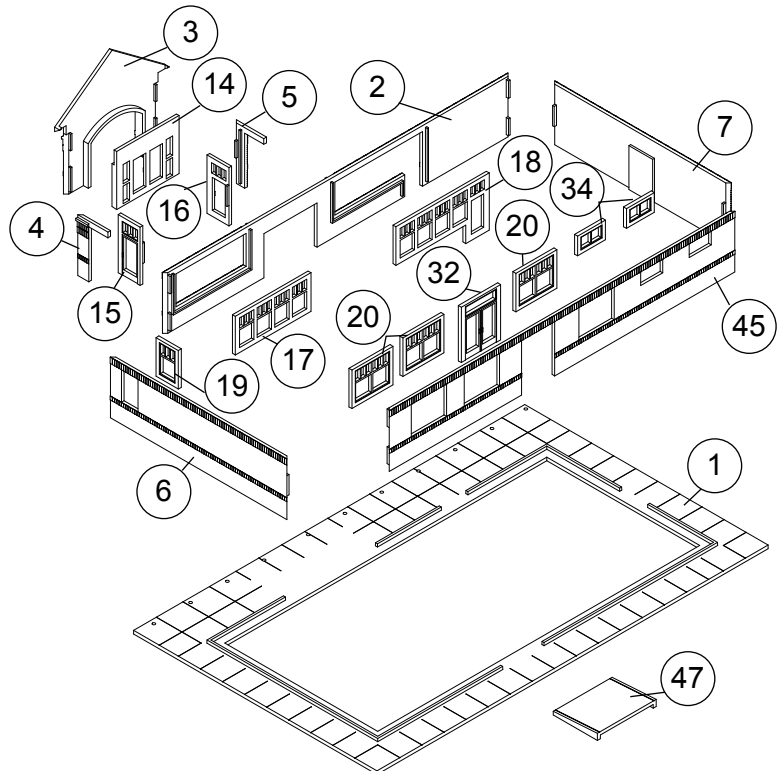
As early railroads spread from cities to outlying towns, a suitable station was one of the first buildings constructed, serving as a gateway for both freight and passengers. Once regular local train service was established, city residents looking for a quieter way of life often relocated to these smaller communities, and dedicated morning and evening commuter runs were added to the railroad's daily schedules. The post-WWII era brought sweeping changes as newer housing and industrial developments were easier to access by road than rail. As ridership and revenue began declining, railroads kept older stations in service, while reducing or eliminating commuter trains to cut costs. By the 1970s, state and local governments began looking at rail service as an alternative to costly highways, creating special transit agencies to provide funding and in some cases, actually operate commuter trains. Integrating bus and rail service was often the first step, and along with new names and logos, existing station facilities also required upgrades. Many were in such poor shape that it was easier to replace them, with designs inspired by historic originals. While they looked like traditional stations and platforms, they incorporated access ramps, non-slip walkways, improved lighting and more, and they're still serving today. Perfect for any suburban station stop, your new model is typical of the simpler designs favored for today's commuter rail service. For figures, railroad equipment, stations and more to complete your scene, see your participating hobby dealer, check out the latest Walthers Model Railroad Reference Book or visit us online at walthers.com.

1) Acetate is provided for window glazing; cut each piece slightly larger than Doors and Windows and glue to back - you may wish to use white glue to avoid damage.

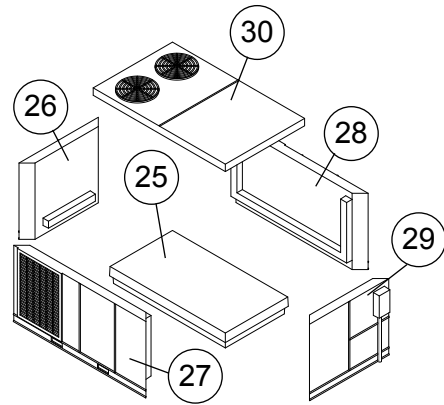
2) PLEASE NOTE - This illustration shows assembly from the rear; parts named as left or right match this sketch. Align slots and ridges on back of Front Entrance Wall (3) with Left (4) and Right (5) Entry Walls and glue at inside corners where parts meet. Glue Left (15) and Right (16) Side Entry Doors to recessed area on back of Entry Walls. Align raised edges of Front Double Entry Door (14) on rear of Front Wall as shown and glue where parts meet.

3) Glue Large Front Left Window (17) and Right (18) Window & Door to inset areas on back of Front Wall (2). Glue Single Window (19) to inset area on inside of Left Wall (6). Glue Double Rear Windows (3x 20) to left, Small Windows (2x 34) to right and Rear Entry Door (32) to inset areas on back of Rear Wall (45).

4) Using raised ridges to align parts, glue Walls (2, 6, 7 and 45) to Base (1) and at inside corners where parts meet. Align tabs on outside edge of Left & Right Side Entry Doors with slots and raised ridges on Front Wall assembly (3), and glue completed Front Entrance to Wall and Base where parts meet.

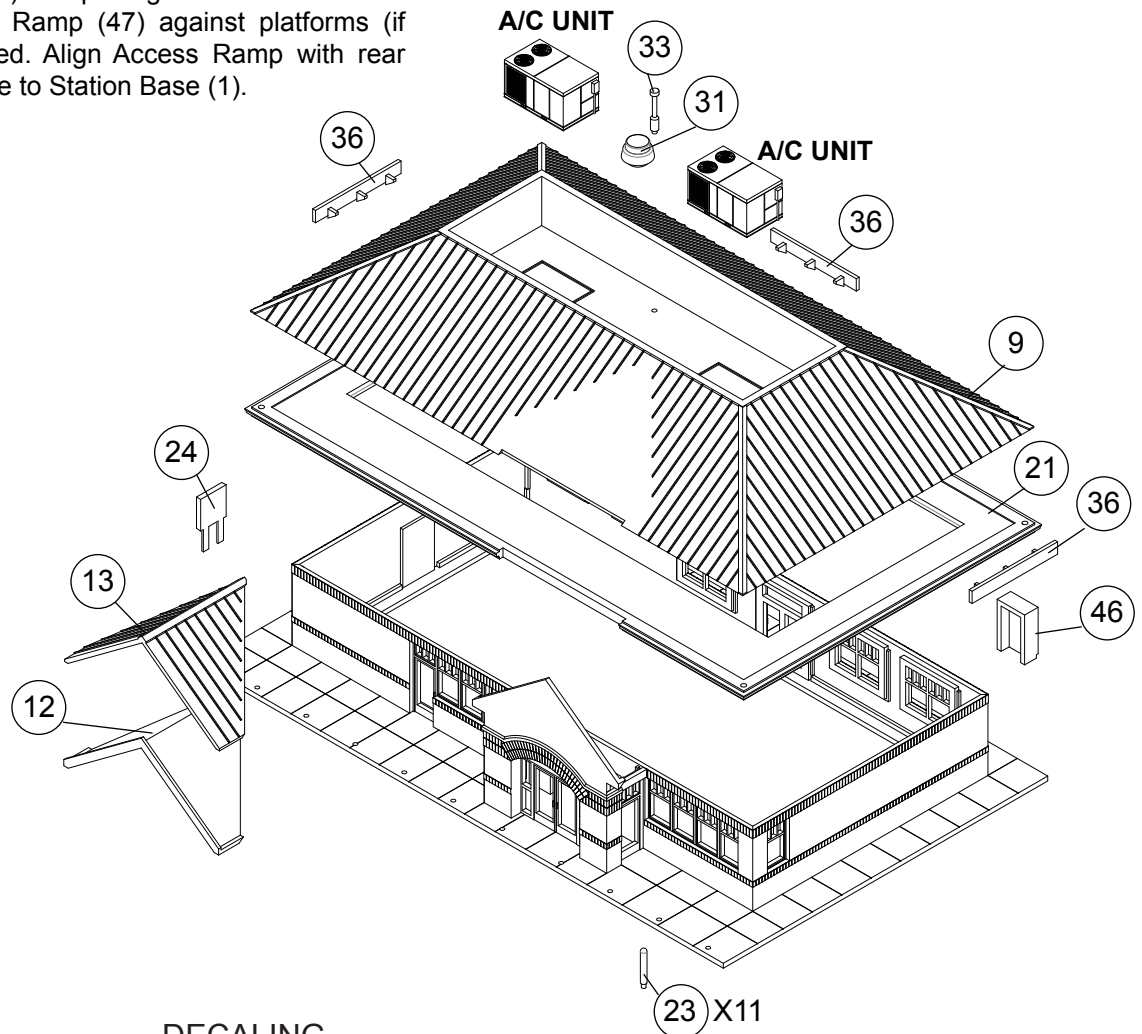


5) Large Rooftop AC Units - make two: note horizontal raised ridges on inside edge of Front (27), Back (28) Left (26) and Right (29) Side Walls are the bottom; use these to align parts and glue to Large AC Base (25) and at inside corners where parts meet. Align inset area on underside of Large Top (30) with wall assembly as shown and glue where parts meet.



6) Align mounting points on top of Eaves (21) with pins on underside of Main Roof (9) and glue where parts meet. Align raised ridge on underside of completed roof with wall assembly; roof may be set in place to add lights or interior details (sold separately) or glued as desired. Glue AC Units and Furnace Exhaust (33) to raised mounting points: Vent (3) may be glued at any convenient location inside the recessed area. Glue Entry Eaves (12) to underside of Entry Roof (13). Glue completed entry roof to open area on front of Main Roof (13). Station Signs (3x 36) are provided for the roof; the prototypes are typically centered at each end and above the rear entrance. Determine where to place your signs and glue to Roof.

7) Final assembly; Glue Electric Service Panel (24) to any convenient location on Left Wall (7). Ticket Machine (46) may be glued in any convenient location on rear sidewalk. Glue Small Safety Posts (11x 23) to openings in Base. PLEASE NOTE: Test fit the Access Ramp (47) against platforms (if used) and adjust as needed. Align Access Ramp with rear entrance as shown, and glue to Station Base (1).



DECALING

1. After cutting out the decal, dip in water for 10 seconds, remove and let stand for 1 minute. Slide decal onto surface, position and then blot off any excess water.
2. Lightly brush Micro Sol[®] on top. This will soften the decal, allowing it to conform to irregular surfaces. DO NOT TOUCH DECAL while wet!
3. When the decal is thoroughly dry, check for any trapped air bubbles. Prick them with the point of a small pin or hobby knife blade and apply more Micro Sol[®].