



# HO Structure Kit **CAR FLOAT** 933-3152

Thanks for purchasing this Cornerstone Series® kit. Please read all instructions and study the drawings before starting - directions for the interior graphics are printed directly on that sheet. All parts are styrene plastic, so use compatible glue. If you wish to decorate your model, use paints for plastic models. With appropriate details and signs, your finished model fits almost any era.

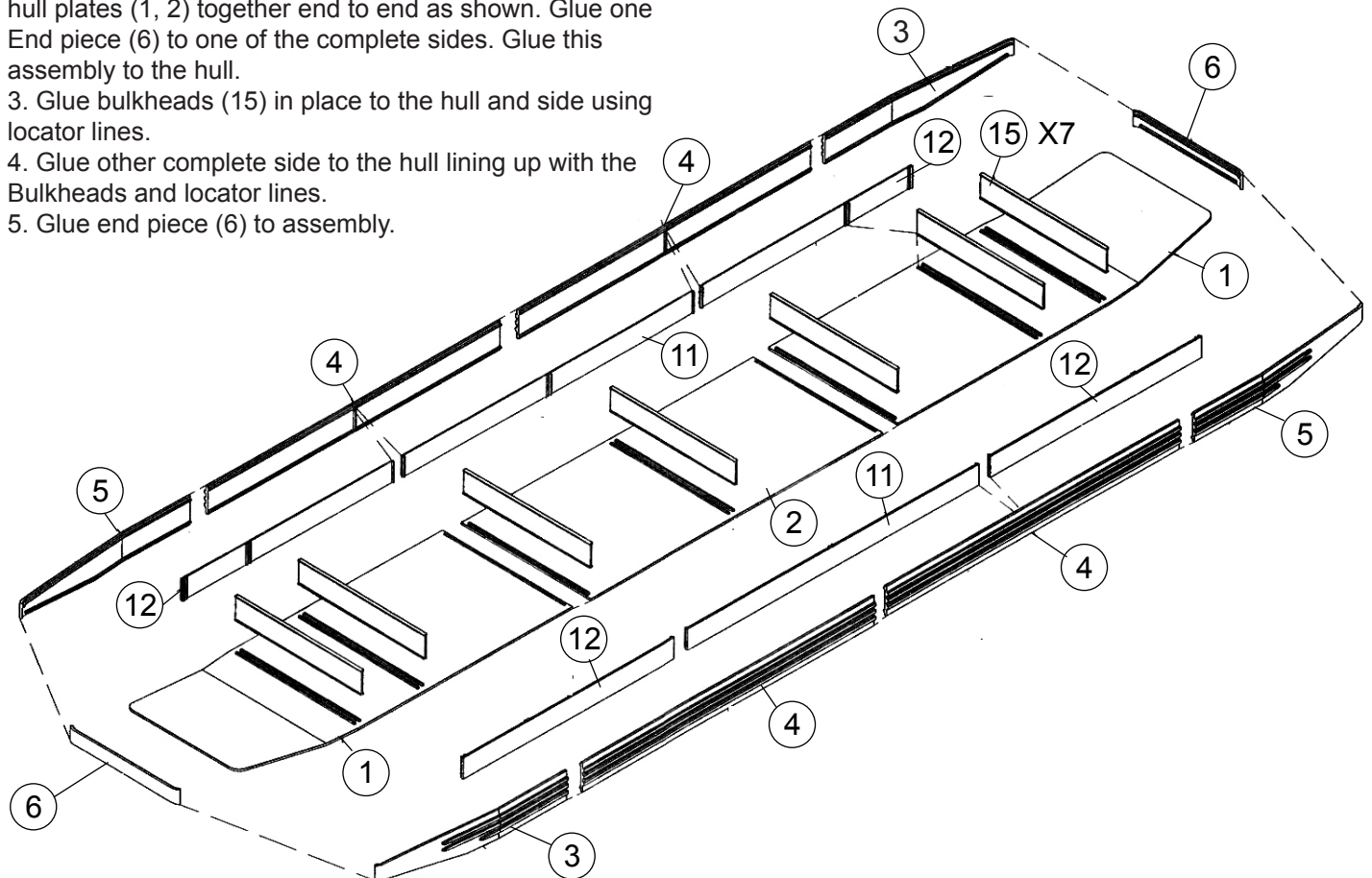
Carfloat operations provide challenging switching for any size layout. The Apron functions as an interchange track while carfloats provide portable staging yards, loaded or empty, to increase the variety of equipment moving on and off your layout during an operating session. Depending on the industries, virtually any freight car that's correct for your time period could be seen on a carfloat. Your new model is typical of prototypes used throughout the 20th century. For added realism, it builds into a "waterline" model with no lower hull. This gives your model the appearance of a vessel in the water, making it easier to add to new or existing scenery.

With the Carfloat Apron (933-3068), you can model a typical facility for loading and unloading. The kit is complete with a 3-track bridge (matching the number of tracks on the float), plus a detailed apron hoist.

Your waterfront will be busy place with a fleet of Railroad Tugboats (933-3153). Since a tug handled only one float at a time, several tugs and floats can be placed in the same scene. Small engines like Walther's Mainline SW1 (910-9200 series) are right at home on the waterfront.

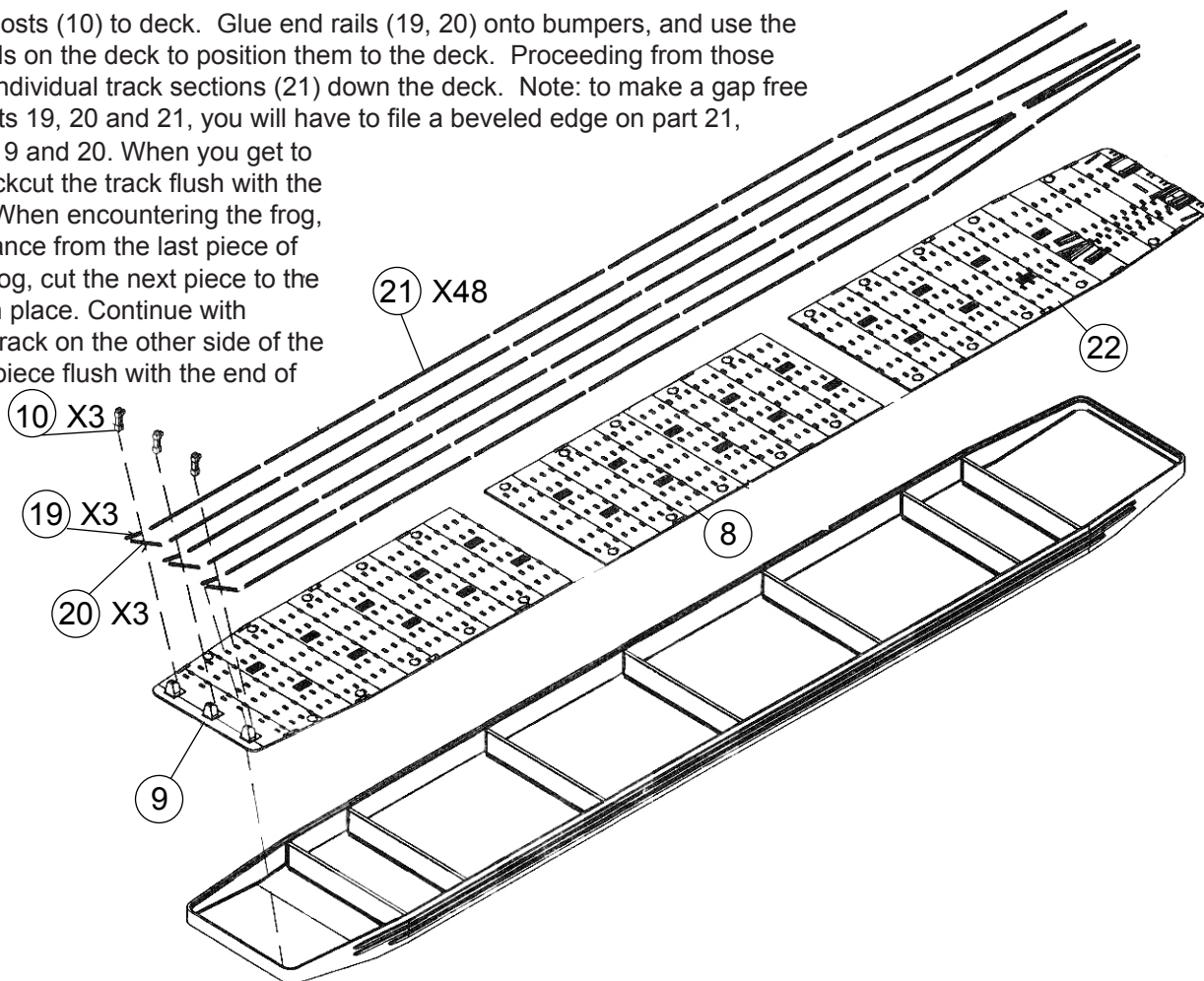
For more Cornerstone Series® kits as well as additional details to complete your scene, see your hobby shop, check out the latest Walther's HO Model Railroad Reference Book and our Website at [walthercornerstone.com](http://walthercornerstone.com).

1. Glue the side supports (11, 12) to the back of the sides (3, 4, 5, 6) to complete the float sides. 2. Glue the bottom hull plates (1, 2) together end to end as shown. Glue one End piece (6) to one of the complete sides. Glue this assembly to the hull.
3. Glue bulkheads (15) in place to the hull and side using locator lines.
4. Glue other complete side to the hull lining up with the Bulkheads and locator lines.
5. Glue end piece (6) to assembly.

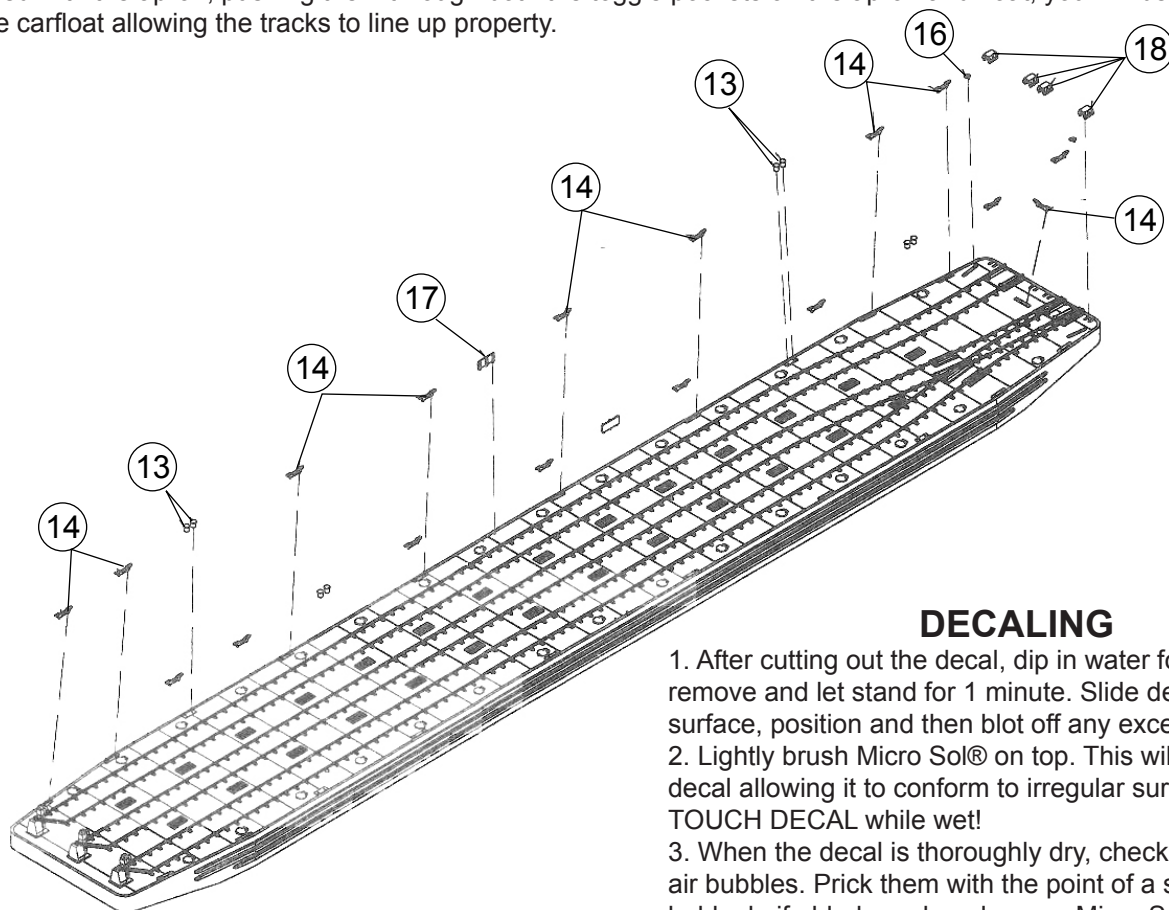


6. Glue deck end piece (9) to hull assembly making sure it is positioned all the way to the end. Making sure the hatch covers are facing the same way as #9, glue middle deck (8) in place. Glue the Deck Front Piece (7) in place.

7. Glue bumper posts (10) to deck. Glue end rails (19, 20) onto bumpers, and use the track locating pads on the deck to position them to the deck. Proceeding from those end rails lay the individual track sections (21) down the deck. Note: to make a gap free joint between parts 19, 20 and 21, you will have to file a beveled edge on part 21, matching that of 19 and 20. When you get to the end of the deck cut the track flush with the end of the float. When encountering the frog, measure the distance from the last piece of track laid to the frog, cut the next piece to the length and glue in place. Continue with another piece of track on the other side of the frog and cut that piece flush with the end of the float.



8. Glue the toggle pockets (18) onto the front of the deck. Next, glue the bridge hooks (16) on. Continue by gluing the cleats (14) and bitts (13) into their respective places on the deck. Complete assembly by gluing the sign boards (17) into their holes in the deck. Note: the toggle pockets on the carfloat line up with those of the Carfloat Apron (933-3068). By using the toggle bars included with the apron, pushing them through both the toggle pockets on the apron and float, you will be able to position the carfloat allowing the tracks to line up properly.



## DECALING

1. After cutting out the decal, dip in water for 10 seconds, remove and let stand for 1 minute. Slide decal onto surface, position and then blot off any excess water.
2. Lightly brush Micro Sol® on top. This will soften the decal allowing it to conform to irregular surfaces. DO NOT TOUCH DECAL while wet!
3. When the decal is thoroughly dry, check for any trapped air bubbles. Prick them with the point of a small pin or hobby knife blade and apply more Micro Sol®.