

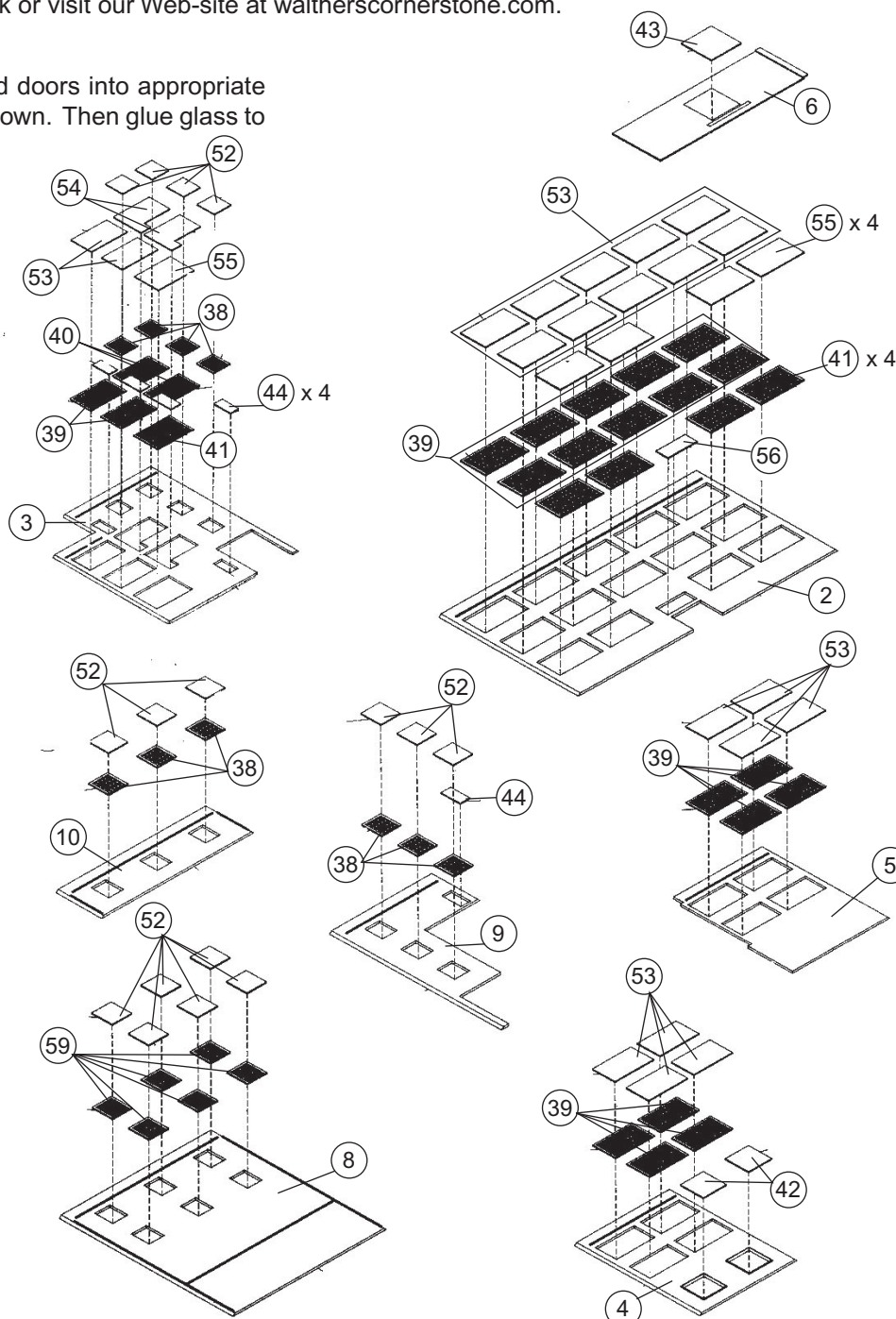


HO Structure Kit GEO. ROBERTS PRINTING INC. 933-3046

Thanks for purchasing this Cornerstone Series® kit. Please take a moment to read all of the instructions and study the drawings before starting. All parts are made from styrene plastic, so use paints and glues which are compatible.

This printing company, with its "brick curtain" style of construction, is right at home on layouts from the 1920's to the present day. A steam- or diesel-era facility can be served by double door box cars which remain in revenue service until 1970's. A very large firm might also choose to receive ink in tank cars, but this could also be shipped in 55 gallon drums loaded in double-door box cars, which could easily be unloaded with a forklift. Since paper is essential to operations, a typical plant will go through several carloads every day. Loads are usually delivered by a local way freight, which will also pick up empties. The empty cars must be cleaned before they can be sent to the paper mill for another load. If the cars are from your home road, you can provide this service with a clean-out track, located near the RIP (repair-in-place) track in a yard. To complete your new industry, with vehicles, scenery material and other accessories, ask your dealer, refer to our current HO Scale Reference Book or visit our Web-site at waltherscornerstone.com.

1. Glue all windows and doors into appropriate locations on walls as shown. Then glue glass to appropriate locations.

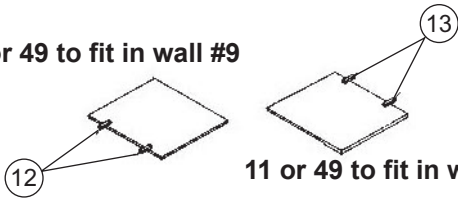


2. Glue curved glass block windows (57) to base (1). Then, glue main door (45), behind the windows, to the base. Glue top (48) over the windows and door, and glue "window glass" (52) in place. Now, glue walls (2, 3, 4, 5, 6, 8, 9) to each other and the base. Next, first glue roof (7) in place and then glue in top wall (10) section as shown. Glue main door canopy (46) into holes on front wall (2).

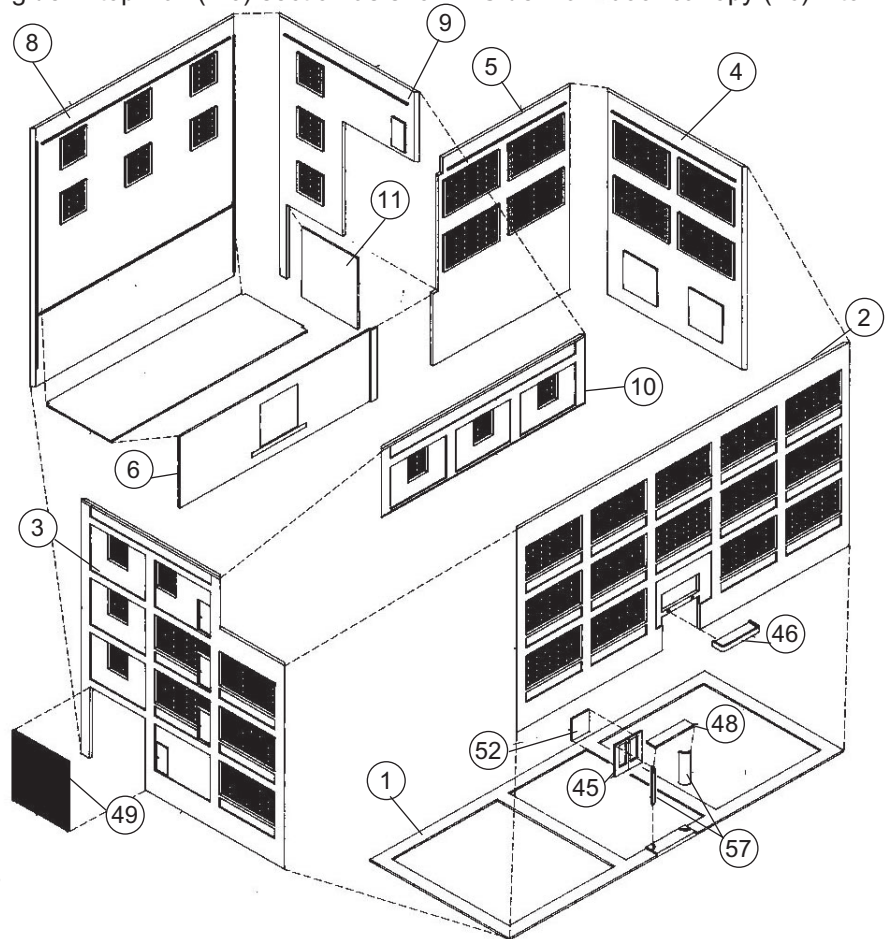
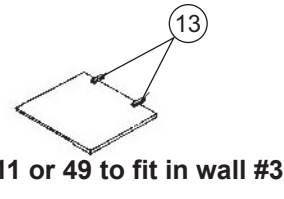
OPTIONAL

To close off track side opening use the large freight door (49) or wall plug (11) provided to openings in walls (3, 9). For the piece (11 or 49) that is going in side wall (3), glue two stops (13) to the right side of the back, one about a third of the way from the top, the other, a third of the way from the bottom. For the piece (11 or 49) that is going in side wall (9), glue the two stops (12) to the left side of the back as previously mentioned. Then, simply glue in place from the inside.

11 or 49 to fit in wall #9



11 or 49 to fit in wall #3



3. Glue roofs (22, 23) in place. Now, first glue water tank sides (24) together, and then to the base (20), gluing the top (36) on next. Glue the tank stands (14) together and to the locating ridges on the roof (23). Continue by gluing the pipe (32) into the bottom of the base (20) and then, glue the assembly to the stand with the pipe going into the roof hole. Glue the chimney (18, 21) together and to the pad on the roof. Next, glue the ladders (26) in place. Then, glue the vents (50, 51) together and to the locating rings on both roofs. Complete this step by gluing the pipe (47) in position.

4. Glue all fire escape platforms (27, 28, 30, 37) and stairways (25, 29) together. Glue these platforms on top of the ridges located on the side of the wall (3). Glue the movable ladder (31, 33, 34) together and, glue this ladder in either a lowered or raised position. Next, glue the side stoop (15, 16, 17, 19) together, along with the railing (35), and then glue this assembly to the base and wall as illustrated.

DECALING

1. After cutting out the decal, dip in water for 10 seconds, remove and let stand for 1 minute. Slide decal onto surface, position and then blot off any excess water.

2. Lightly brush Micro Sol® on top. This will soften the decal allowing it to conform to irregular surfaces. DO NOT TOUCH DECAL while wet!

3. When the decal is thoroughly dry, check for any trapped air bubbles. Prick them with the point of a small pin or hobby knife blade and apply more Micro Sol®.

