



# HO Structure Kit GOLDEN VALLEY CANNING CO. 933-3018

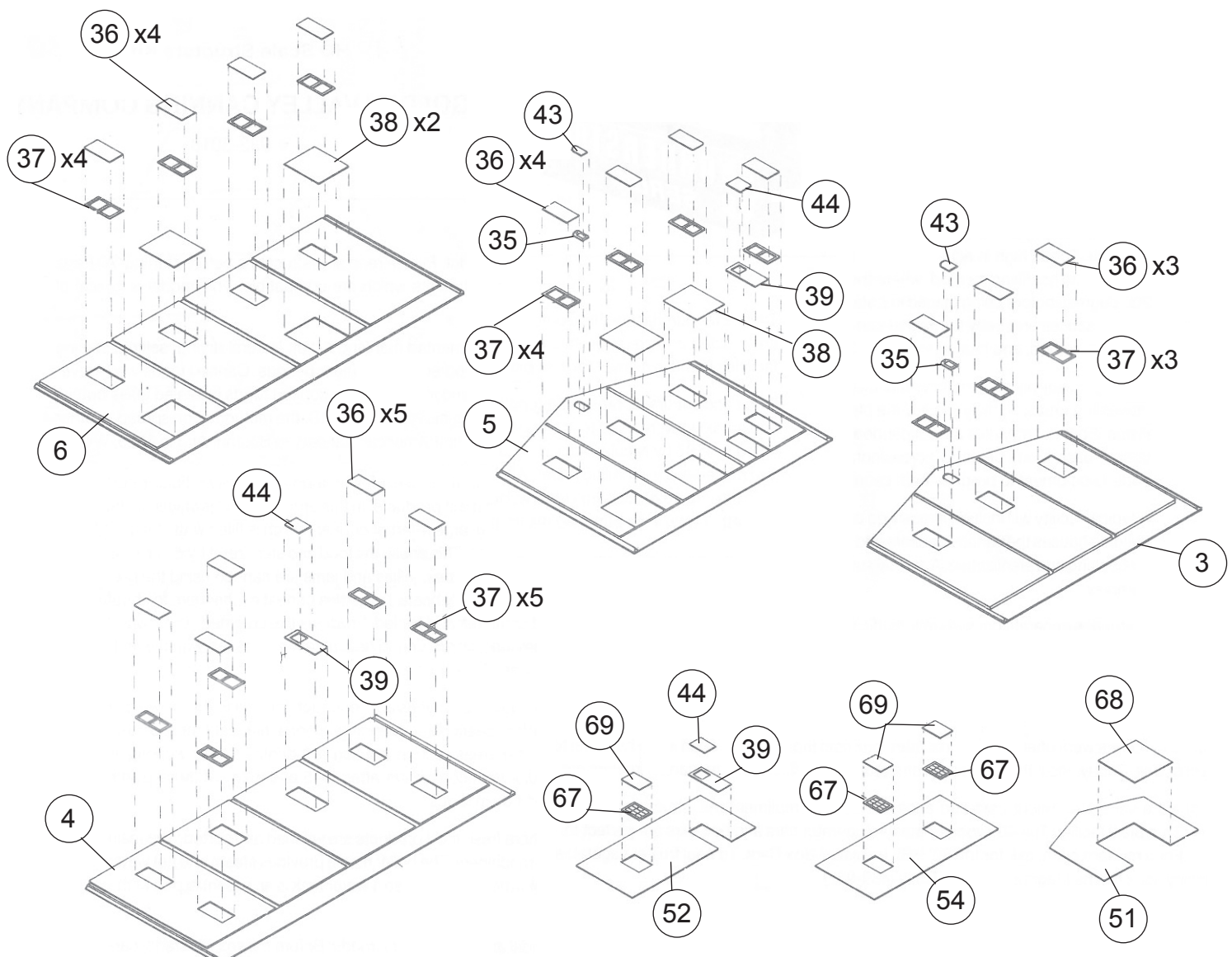
Thanks for purchasing this Cornerstone Series® kit. Please read all instructions and study the drawings before starting — directions for the interior graphics are printed directly on that sheet. All parts are styrene plastic, so use compatible glue. If you wish to decorate your model, use paints for plastic models. With appropriate details and signs, your finished model fits almost any era.

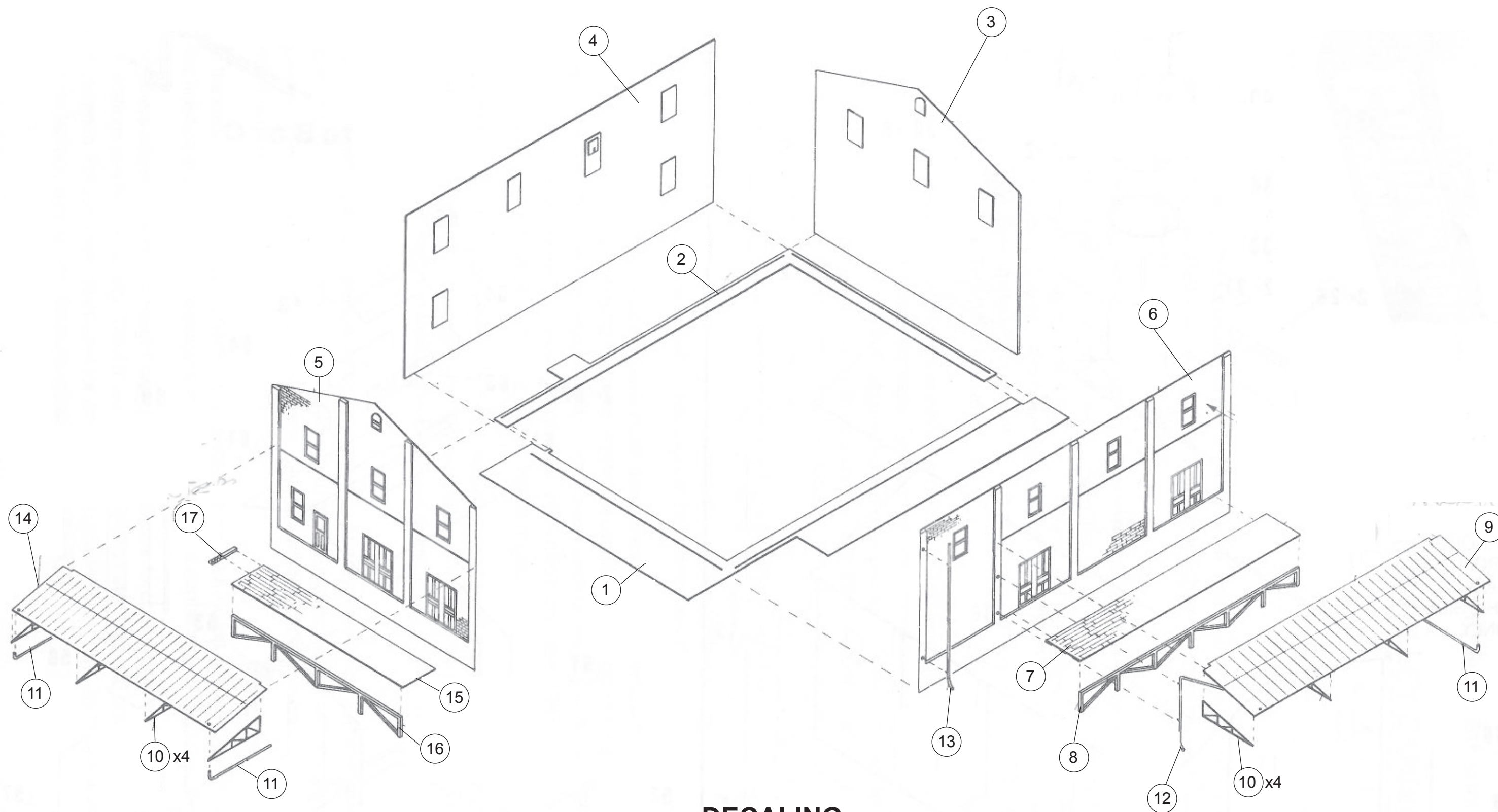
A typical cannery will include a receiving area where fresh food products are washed and sorted. The main building houses the various cookers and other machinery. The boiler house provides steam and hot water for cooking and sterilization. A steady supply of water is needed, so a water tank is an essential part of the complex.

Canneries generate considerable traffic for model and prototype railroads. Before the season starts, carloads of bottles or cans, labels, coal, machinery and other supplies such as salt, sugar or vinegar (used as preservatives) arrive. Once the harvest starts, several carloads of canned fruit, vegetables or other products are usually picked up by local trains daily.

In the steam era, reefers were often used as insulated box cars (no ice was loaded in the bunkers) to move the finished goods. Today, insulated box cars, refrigerated containers, or mechanical reefers are used.

For more Cornerstone Series® kits as well as additional details to complete your scene, see your hobby shop, check out the latest Walther's HO Model Railroad Reference Book and our Website at [waltherscornerstone.com](http://waltherscornerstone.com).





## DECALING

1. After cutting out the decal, dip in water for 10 seconds, remove and let stand for 1 minute. Slide decal onto surface, position and then blot off any excess water.
2. Lightly brush Micro Sol® on top. This will soften the decal allowing it to conform to irregular surfaces. **DO NOT TOUCH DECAL** while wet!
3. When the decal is thoroughly dry, check for any trapped air bubbles. Prick them with the point of a small pin or hobby knife blade and apply more Micro Sol®.

