



HO Structure Kit MILWAUKEE BEER & ALE 933-3024

Thanks for purchasing this Cornerstone Series® kit. Please read all instructions and study the drawings before starting — directions for the interior graphics are printed directly on that sheet. All parts are styrene plastic, so use compatible glue. If you wish to decorate your model, use paints for plastic models. With appropriate details and signs, your finished model fits almost any era.

Suitable for use from the late 19th century to the present, your new model can be a stand-alone industry or the central point of a larger facility. Found in the older industrial areas of large cities and requiring constant rail service, a brewery is ideal for a busy branchline, or the central theme of a compact switching layout.

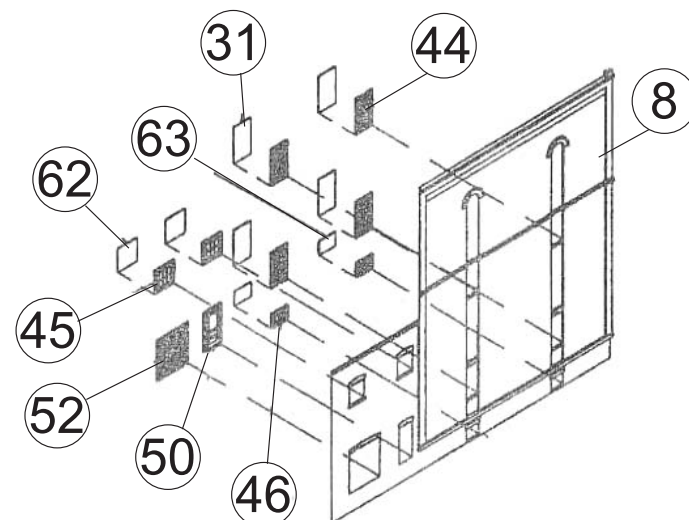
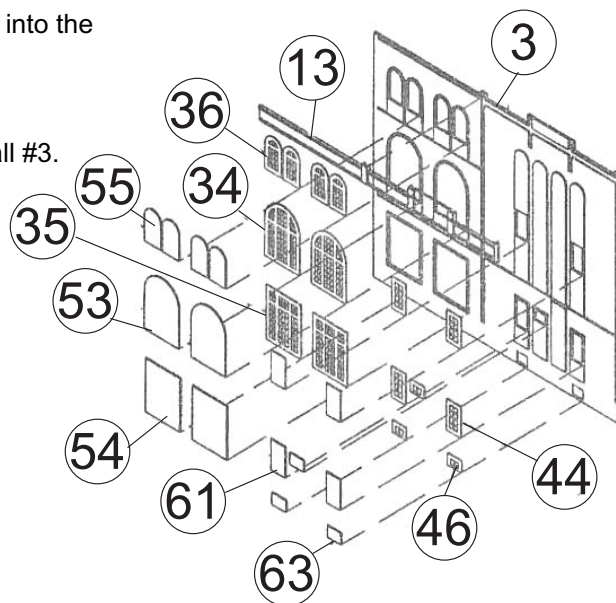
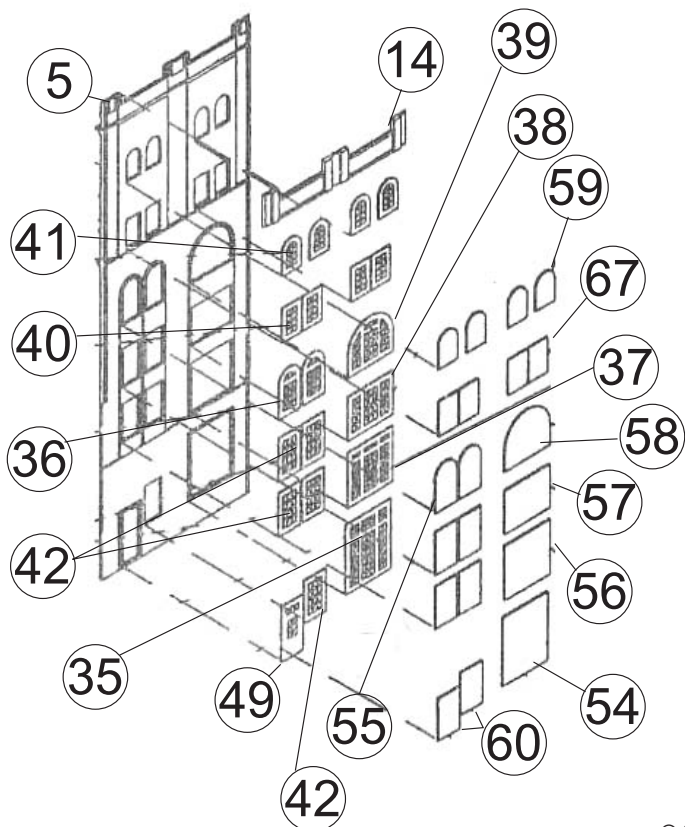
Over time, newer buildings of different materials and styles were added to the brewery complex, and it is very common to see structures from several periods side by side. A bottling plant can be modeled with a large building like the Champion Packing Company (933-3048), George Roberts Printing Co. (933-3046) or Hardwood Furniture Company (933-3044). New bottles, bottle caps, cans and kegs can be delivered in box cars or trucks. Be sure to add a discharge chute on the side of the building where crushed cans or broken glass (called cullet) can be loaded into a waiting hopper or gondola to be recycled.

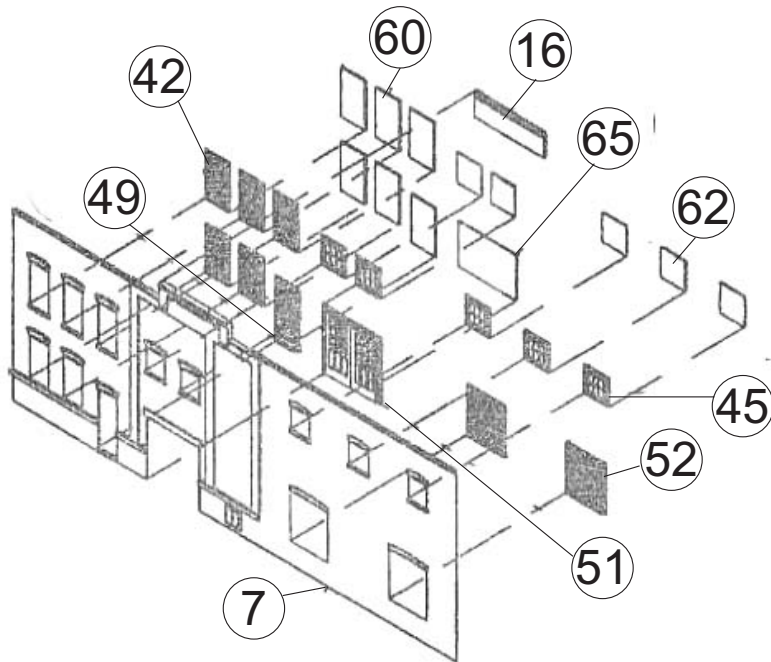
Breweries use tremendous amounts of barley, corn, rice and wheat, which is delivered to elevators built on or near the complex. For a steam-era scene, the Rural Elevator (933-3036) can be used, while the ADM Elevator (933-3022) fits newer settings.

For a good general overview of a modern brewery, see Blitz-Weinhard Brewing Company by Harry Bonham in the April, 1998 issue of Railroad Model Craftsman.

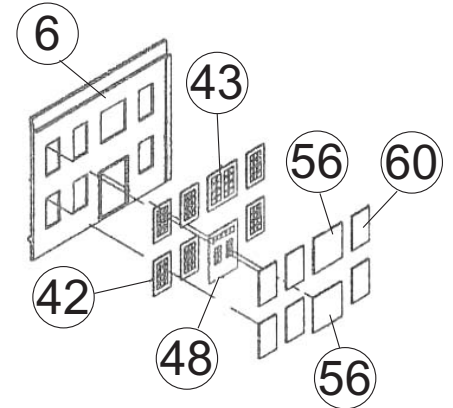
For more Cornerstone Series® kits as well as additional details to complete your scene, see your hobby shop, check out the latest Walther's HO Model Railroad Reference Book and our Website at waltherscornerstone.com.

1. Glue the windows (35, 36, 37, 38, 39, 40, 41, 42) and door (49) into the back of wall #5.
2. Glue the window "glass" (54, 55, 56, 57, 58, 59, 60) in place.
3. Glue the back wall section (14) to Wall #5.
4. Glue the windows (34, 35, 36, 44, 46) in place on the back of wall #3.
5. Glue the window "glass" (53, 54, 55, 61, 63) in place.
6. Glue the back wall section (13) to wall #3.
7. Glue the windows (44, 45, 46) and doors (50, 52) into the back of wall #8
8. Glue the window "glass" (61, 62, 63) in place.

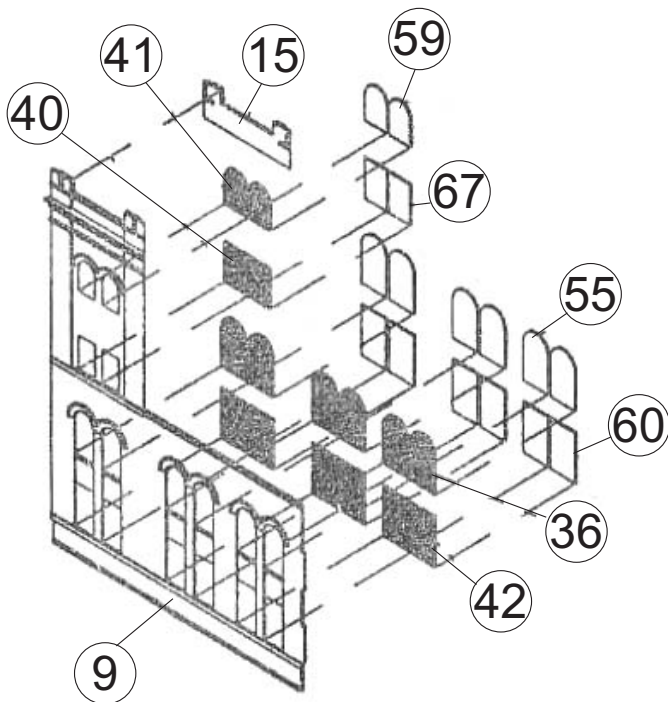




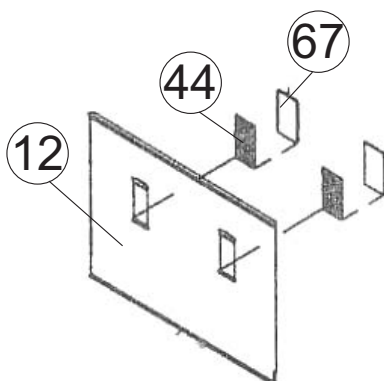
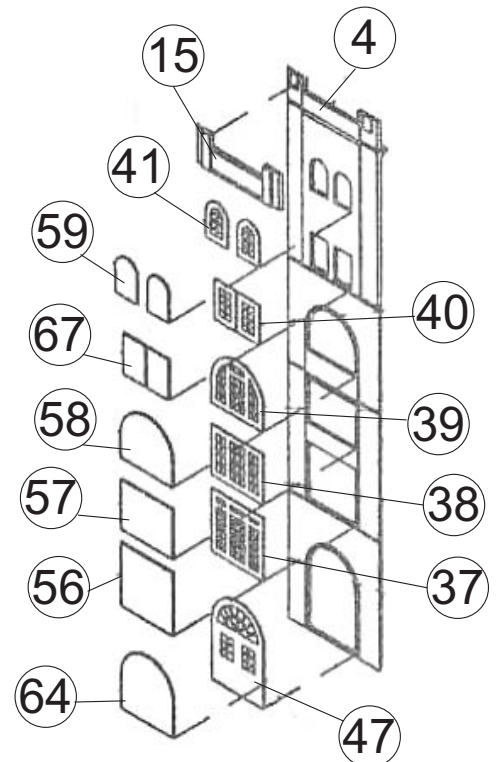
9. Glue the windows (42, 45) and doors (49, 51, 52) in place on the back of Wall #7,
10. Glue the window "glass" (60, 62, 55) in place as shown.
11. Glue the back wall section (16) in place on the back of wall #7 as illustrated.
12. Glue the windows (42, 43) and door (48) into the back of wall #6.
13. Glue the window "glass" (56, 60) in place.



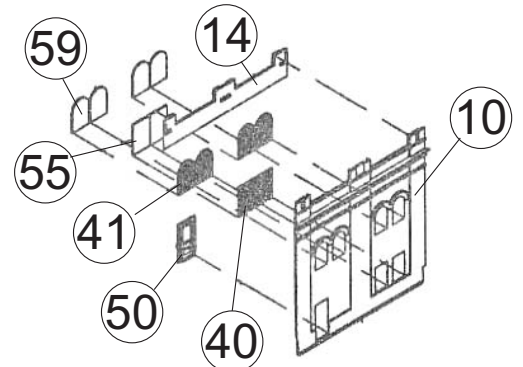
14. Glue the windows (36, 40, 41, 42) in place on the back of wall #9,
15. Glue the window "glass" (55, 59, 60, 67) in place as shown.
16. Glue the back wall section (15) on the back of wall #9.



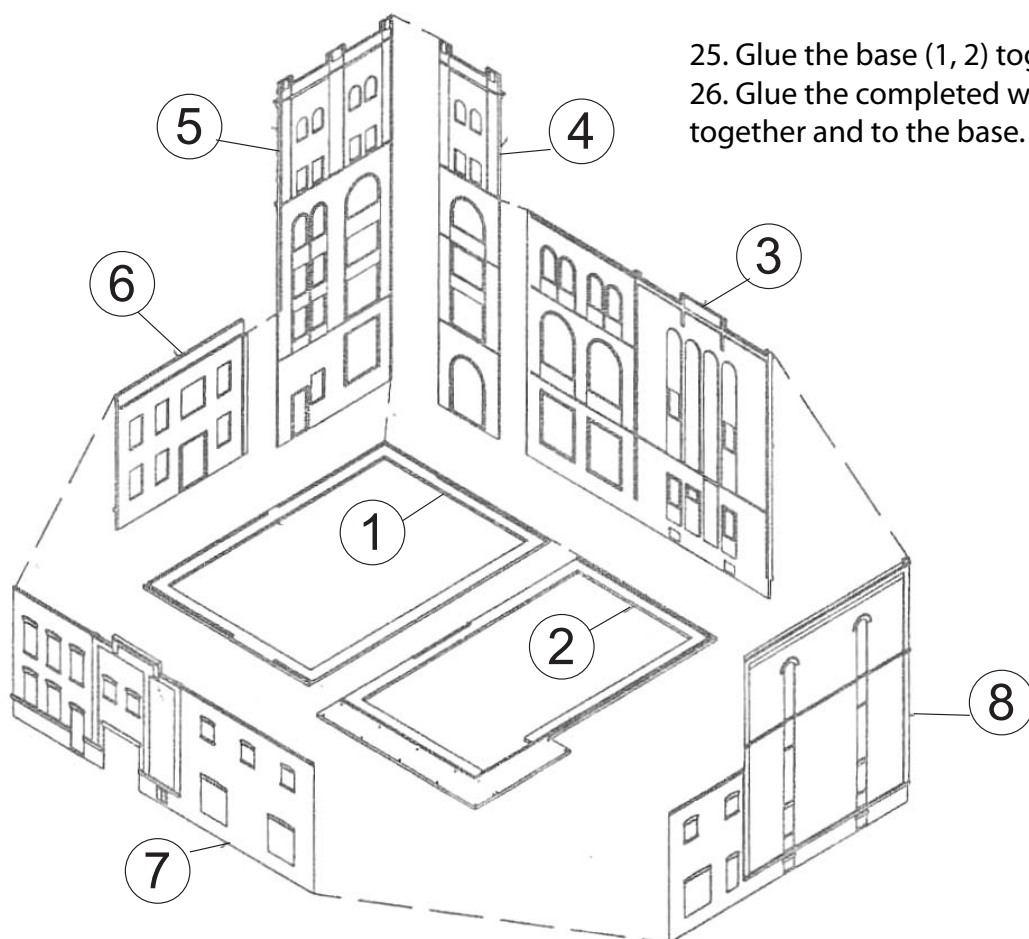
17. Glue the windows (37, 38, 39, 40, 41) and door (47) into the back of wall #4
18. Glue the window "glass" (56, 57, 58, 59, 64, 67) in place.
19. Glue the back wall section (15) on the back of wall #4.



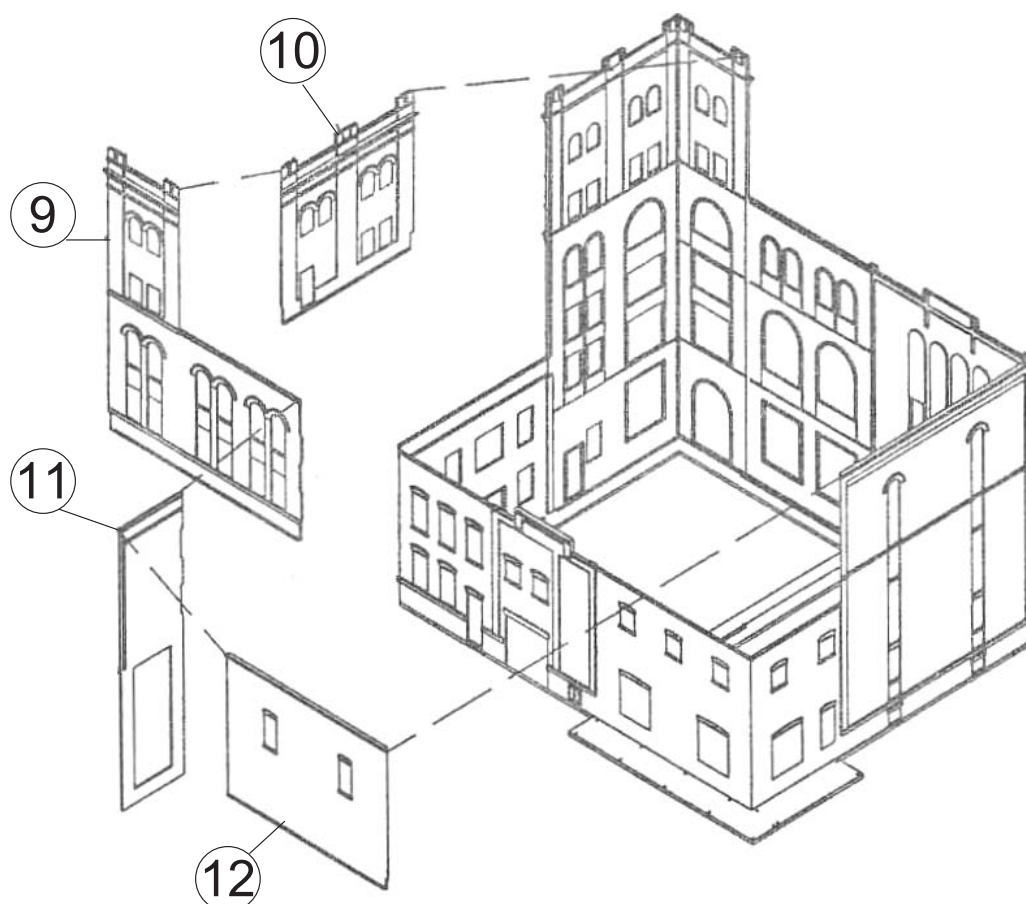
20. Glue the windows (40, 41) and door (50) in place on the back of wall #10.
21. Glue the window "glass" (55, 59) in place.
22. Glue the back wall section (14) to the back of wall #10.
23. Glue the window (44) into the back of wall #12.
24. Glue the window "glass" (67) in place.

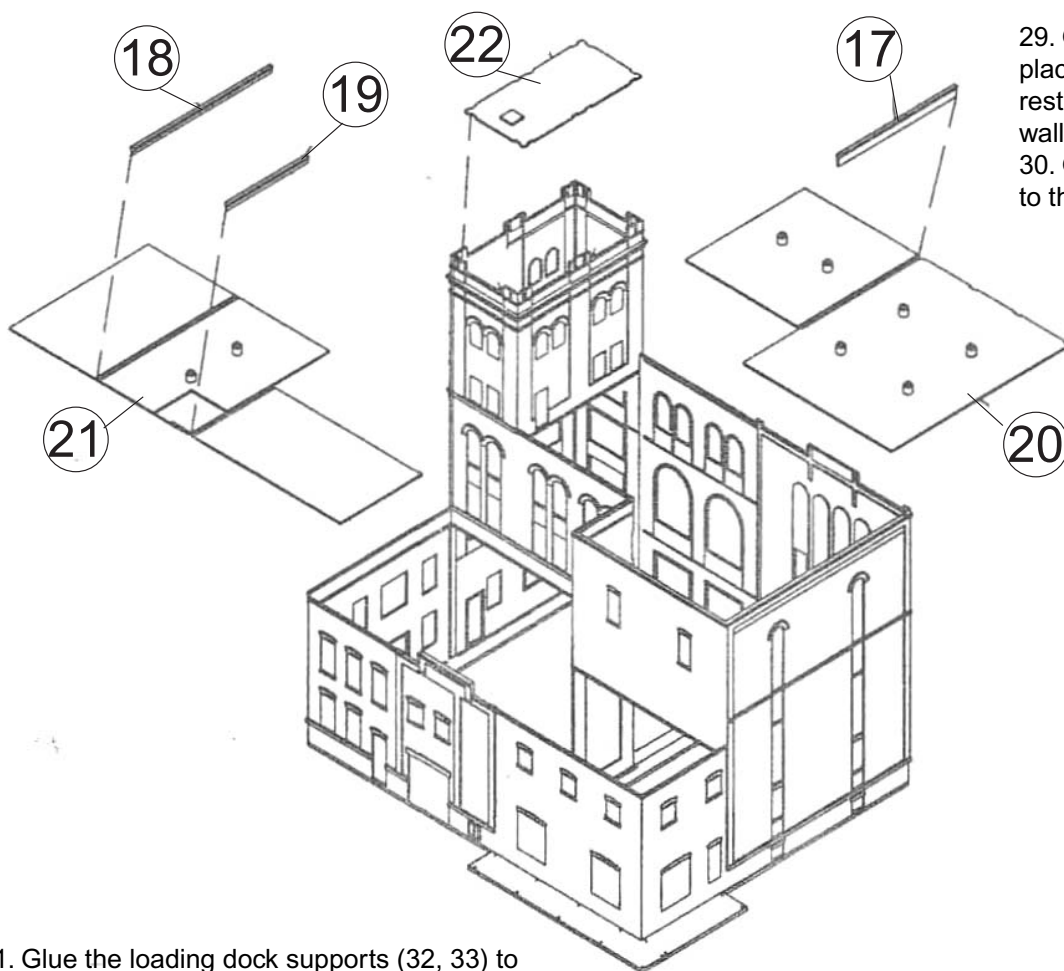


25. Glue the base (1, 2) together.
 26. Glue the completed walls (3, 4, 5, 6, 7, 8) together and to the base.



27. Glue wall #'s 9 and 10 together and to the top of walls #4 and 5.
 28. Glue wall sections #8 11 and 12 together and to walls #8 and #9. Note: the bottom of wall #11 will be glued in place along a locating ridge on base part #2.





29. Glue the roofs (20, 21, 22) in place as illustrated. Note: they will rest upon ridges protruding from the wall pieces.
30. Glue on the wall caps (17, 18, 19) to the roofs as shown.

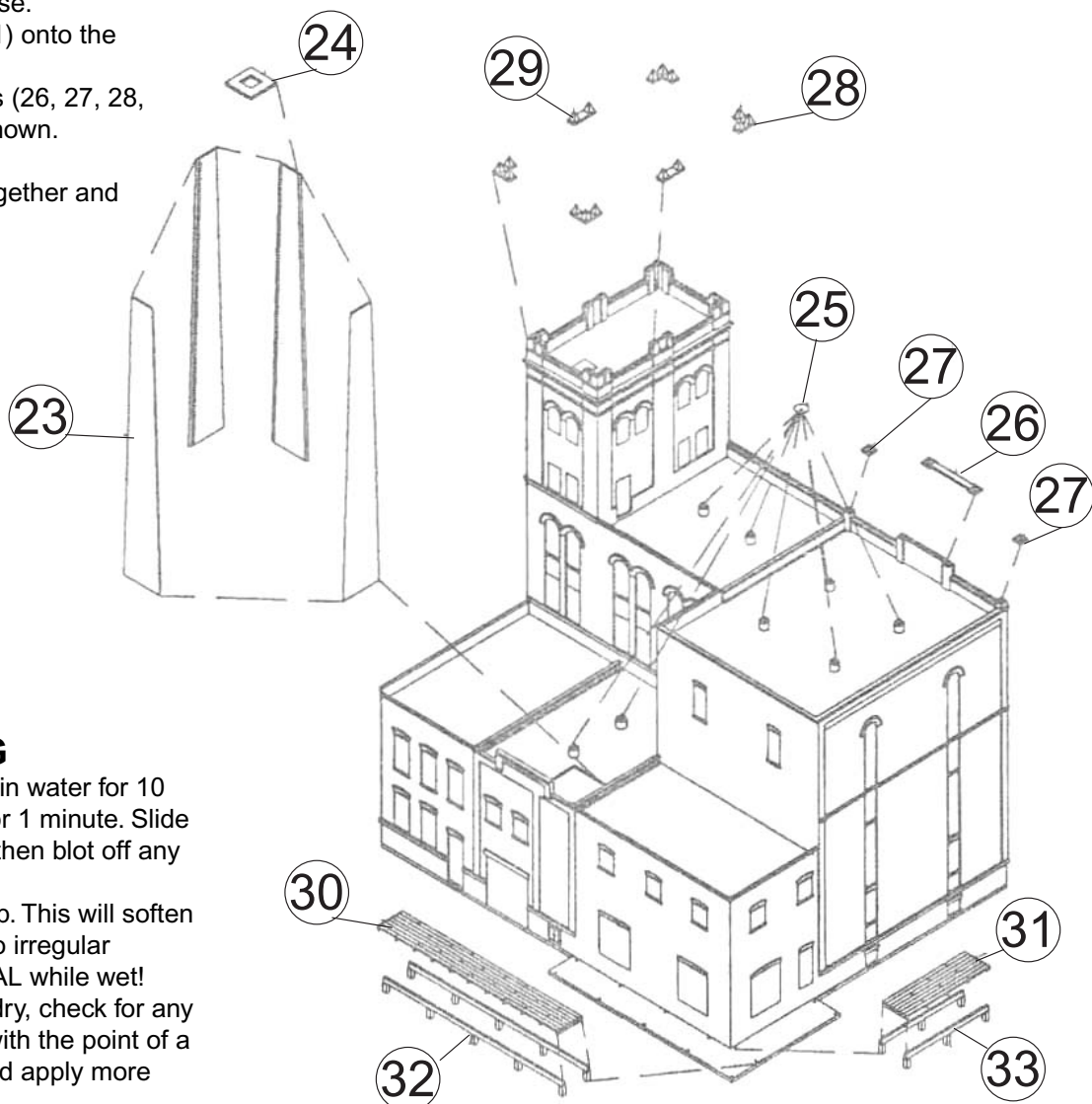
31. Glue the loading dock supports (32, 33) to their respective places on the base.

32. Glue the loading dock (30, 31) onto the supports as shown,

33. Glue the decorative wall caps (26, 27, 28, 29) on the tops of the walls as shown.

34. Glue the vent covers (25) on.

35. Glue the chimney (23, 24) together and them in place on the roof.



DECALING

1. After cutting out the decal, dip in water for 10 seconds, remove and let stand for 1 minute. Slide decal onto surface, position and then blot off any excess water.

2. Lightly brush Micro Sol® on top. This will soften the decal allowing it to conform to irregular surfaces. DO NOT TOUCH DECAL while wet!

3. When the decal is thoroughly dry, check for any trapped air bubbles. Prick them with the point of a small pin or hobby knife blade and apply more Micro Sol®.