



# HO Structure Kit **VARIETY PRINTING BACKGROUND BLDG**

933-3161

Thanks for purchasing this Cornerstone kit. All parts are styrene, so use compatible paint and glue to assemble and finish your model. **PLEASE NOTE:** This is a partial kit, designed for use as a scenic background structure. Your new model can be assembled as a stock (2-3/4" (7cm) deep; no cutting needed), narrow (3/8" (.93cm) deep), or angled version. Molded cut lines are provided on the Base (1), Sidewalls (3, 4) and Roof (22) for easy modification. Select which option you'll build and follow the appropriate instructions. Leftover parts can be kept for future projects or discarded.

Today's printing plants run nonstop and rely on railroads to keep them supplied with enormous rolls of paper that measure nearly 10' (3m) in diameter and weigh several tons. Depending on what the plant produces, this may include newsprint and/or coated papers used in the production of magazines, books and catalogs. Since paper is heavy, a few rolls fill a boxcar to capacity and while printers keep some paper on hand, many prefer "just in time delivery." As a result, printing plants are typically switched daily, with loaded cars exchanged for empties. Paper has to be handled carefully, and kept clean and dry in transit. In the steam- and early diesel-eras, newer boxcars suitable for any clean loading were used, and in later years as roll size increased, double-door cars were rebuilt for paper traffic. Today, specially equipped boxcars assigned to paper service are common, along with older insulated boxcars (RBL) where the tight-fitting plug doors keep out dirt while the interior insulation helps prevent condensation. Running around the clock, your new model can be one of the busiest customers on your railroad and is ideal for expanding operation in a limited space. See your dealer, the current Walther's HO Scale Model Railroad Reference Book or [walthers.com](http://walthers.com) for additional details to complete your scene.

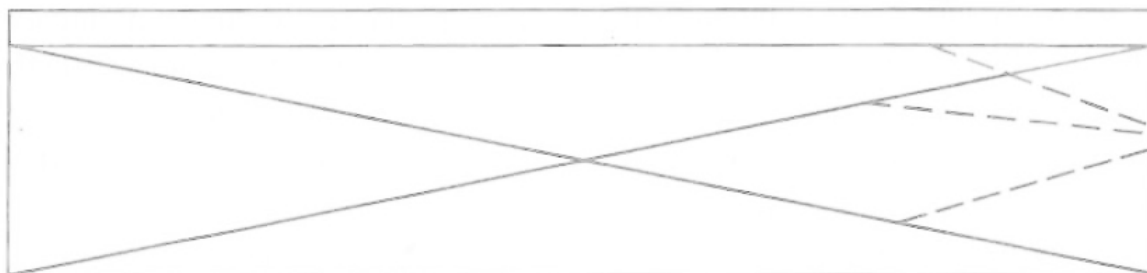
**PLEASE NOTE:** Select which option you'll build and follow the appropriate instructions. Sketches show underside of parts. Work carefully and always cut away from your hands – use a sharp knife with a new blade and make several light passes.

A) Stock Model - no cutting is needed; proceed to step 1.

B) 3/8" (.93cm) Deep Structure: Cut Base (1) and Roof (22) at the horizontal groove; discard the remaining portions with "X" grooves. Cut grooves on Sidewalls (3, 4); discard the windowed portion.

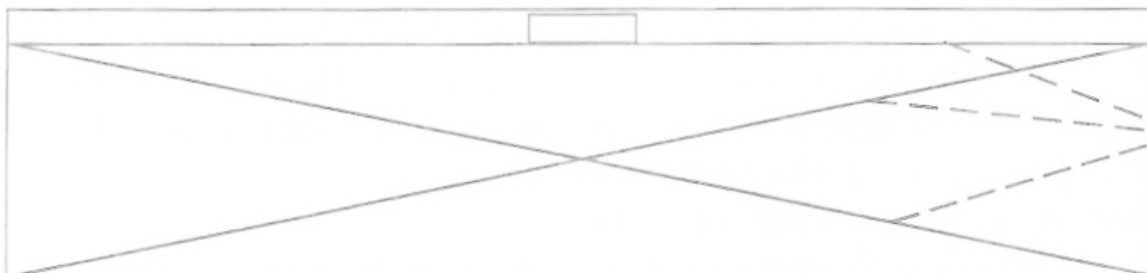
C. Left or Right Angled Structure: Cut Base (1) and Roof (22) following the appropriate angled grooves - remember these sketches show the bottom. Cut only the Left (3) or Right Sidewall (4) for the short side; the remaining Sidewall is used as-is.

**ROOF  
(Bottom)**

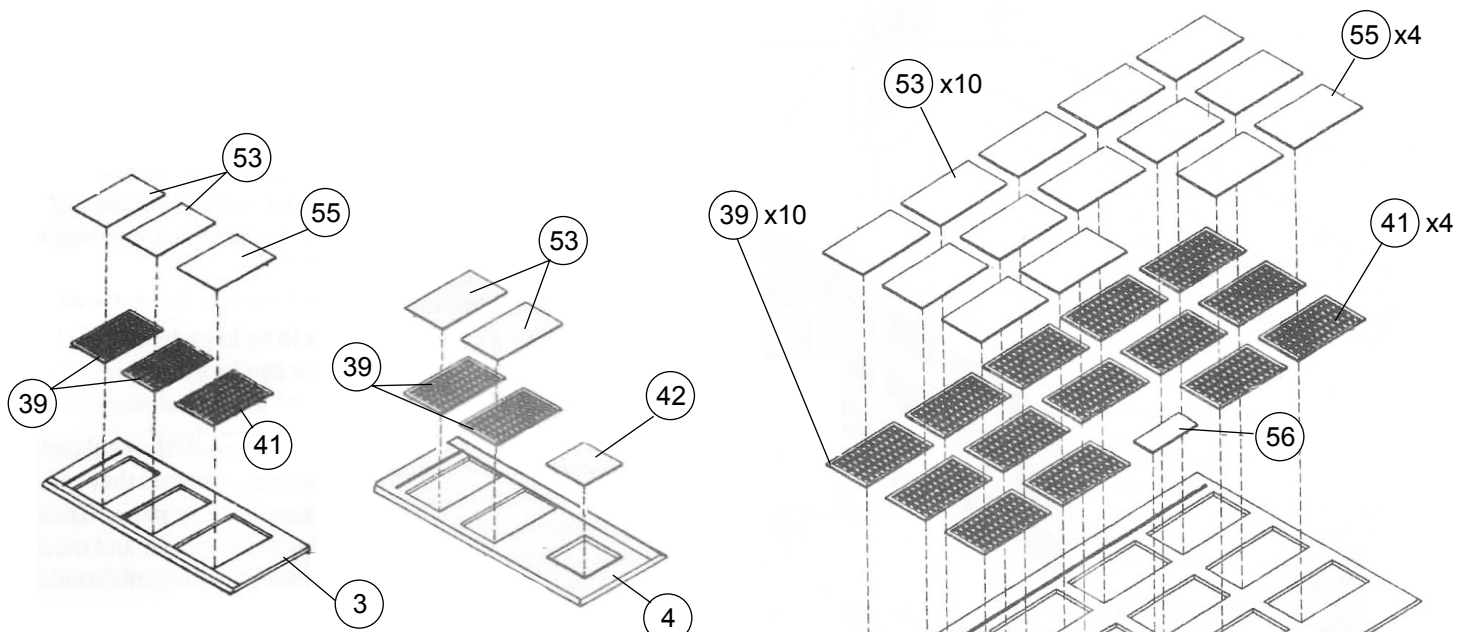


**Cutting  
Grooves**

**BASE  
(Bottom)**



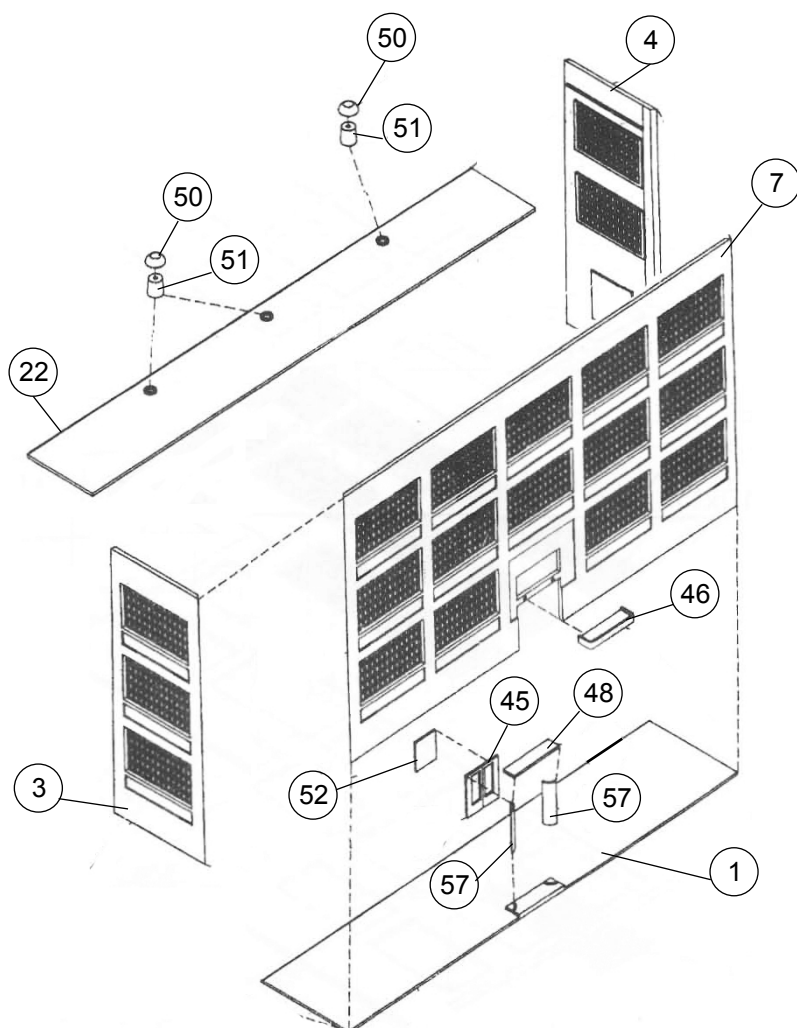
**Cutting  
Grooves**



General Assembly – Stock version shown

### Windows & Doors:

- 1) Front Wall (2); Glue Ground Floor Windows (4x 41) to lower level only, and Ground Floor Glass (4x 55) to these windows. On upper floors, glue Windows (10x 39) and Glass (10x 53) as shown.
- 2) Sidewalls (3, 4) glue Windows (3x 39) and Glass (3x 53).
- 3) Entry Door (45); glue Entry Door Glass (46) to back.



### Front Entrance

- 4) Note raised ridges on Base to align parts and glue Half-Round Trim (2x 57) in place at left and right. Glue completed Door (45) to back of Trim pieces and to Base. Glue Entry Ceiling (48) to tops of Trim and Door.

### Final Assembly

- 5) Use raised ridges to align parts, and glue Walls (2, 3, 4) to Base and at inside edges where parts meet. Glue Roof (22) to ridges on inside edges of Walls. Glue Vents (3x 50) to Vent Bases (3x 51) and glue completed vents to openings on Roof. Glue Canopy (46) to Front Wall (7) above entrance.

### DECALING

1. After cutting out the decal, dip in water for 10 seconds, remove and let stand for 1 minute. Slide decal onto surface, position and then blot off any excess water.
2. Lightly brush Micro Sol® on top. This will soften the decal allowing it to conform to irregular surfaces. DO NOT TOUCH DECAL while wet!
3. When the decal is thoroughly dry, check for any trapped air bubbles. Prick them with the point of a small pin or hobby knife blade and apply more Micro Sol®.