



HO Structure Kit WATER ST. FREIGHT HOUSE 933-3009

Thanks for purchasing this Cornerstone Series® kit. Please read all instructions and study the drawings before starting. All parts are styrene plastic, so use compatible glue. If you wish to decorate your model, use paints for plastic models. With appropriate details and signs, your finished model fits almost any era.

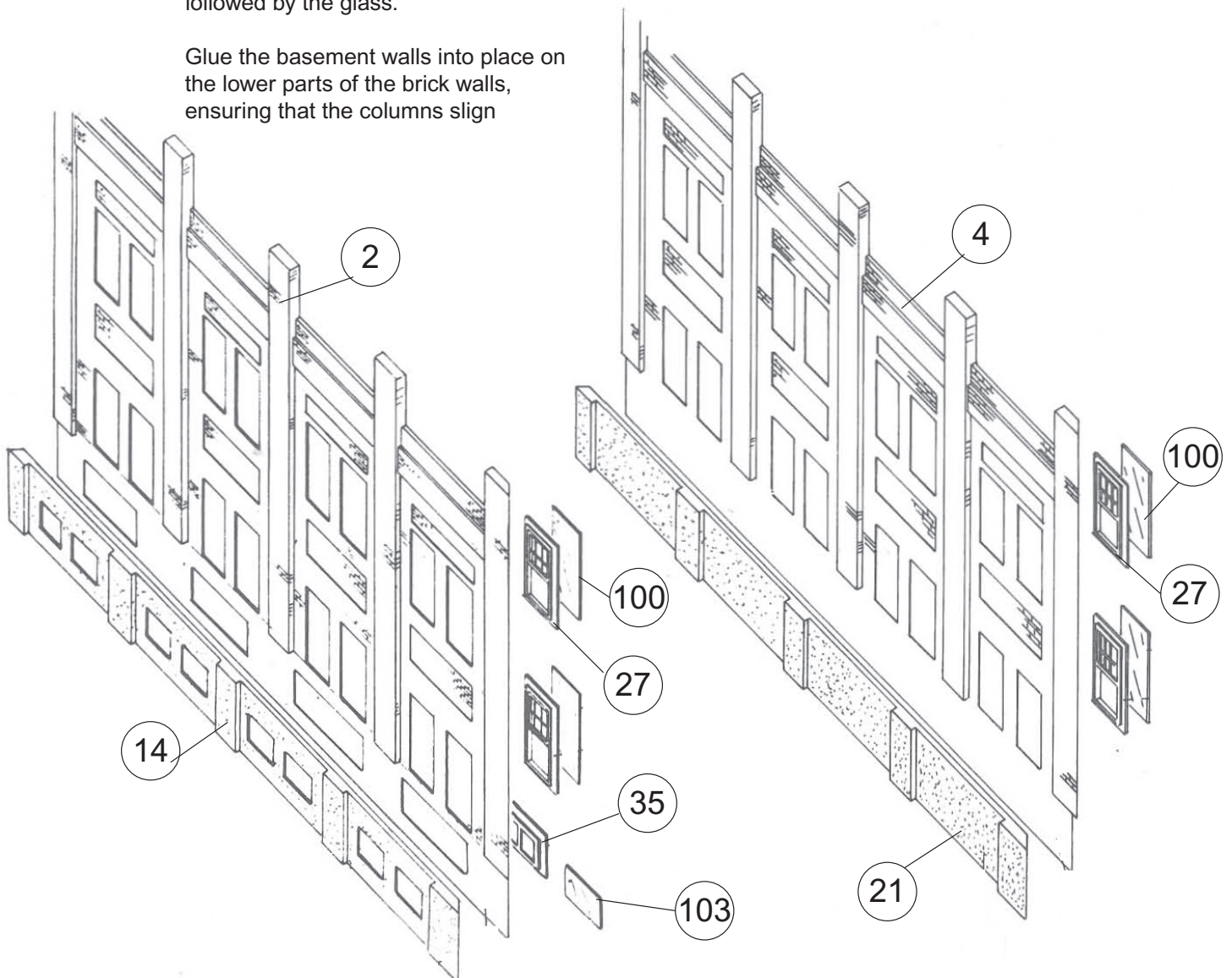
Freight terminals were once essential to railroad operations, handling small, less-than-carload lot (LCL) freight shipments. Loads arrived in box cars or refrigerated cars and were transferred to a fleet of trucks for local delivery. The trucks would also pick up freight which was to be shipped by rail. Each railroad serving a community had its own freight terminal, usually located near the main passenger station or classification yard, so several of these kits can be used on your layout.

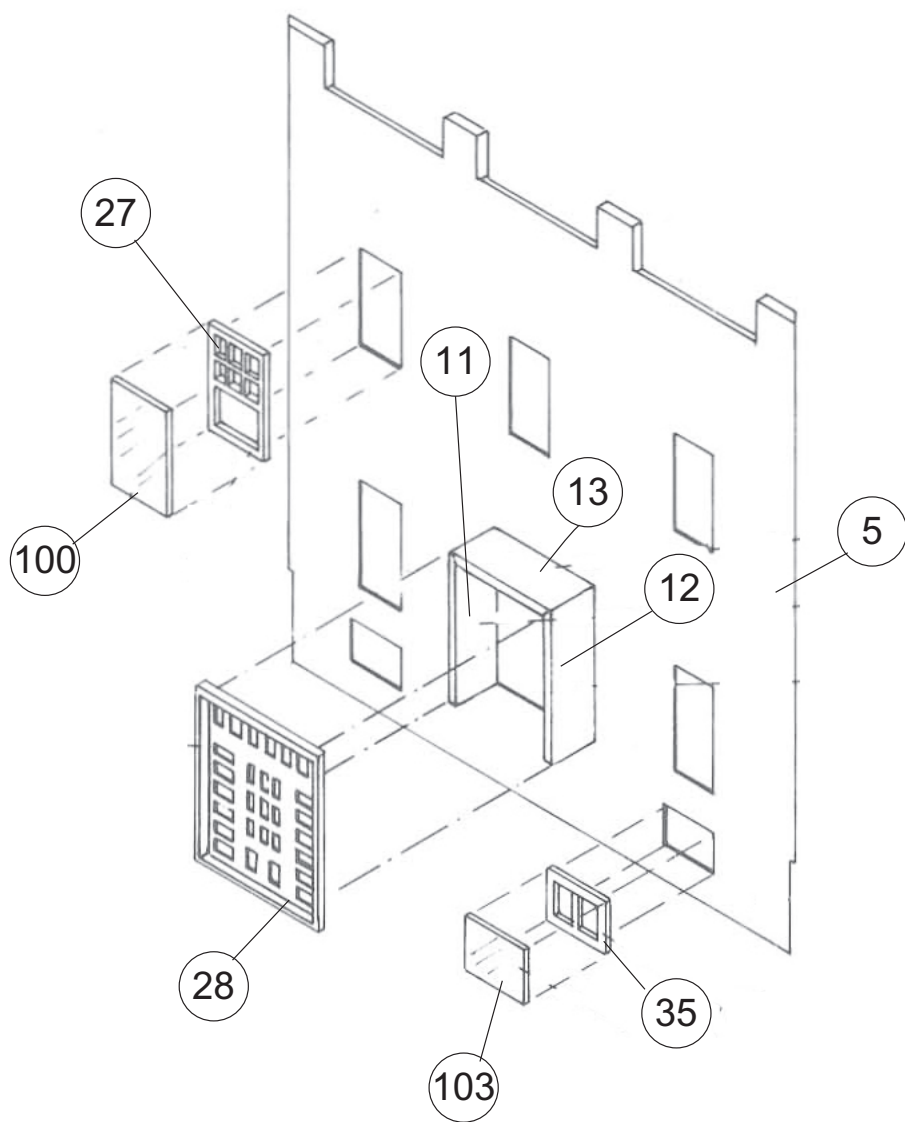
A typical freight house would be served by two or more parallel tracks. Cars were spotted side by side and metal bridge plates were positioned between doors, so the car did not have to be moved next to the building to be loaded or unloaded.

See your local hobby dealer, Walther's Latest HO Scale Reference book or visit our Web site at www.waltherscornerstone.com for additional accessories to complete your new scene.

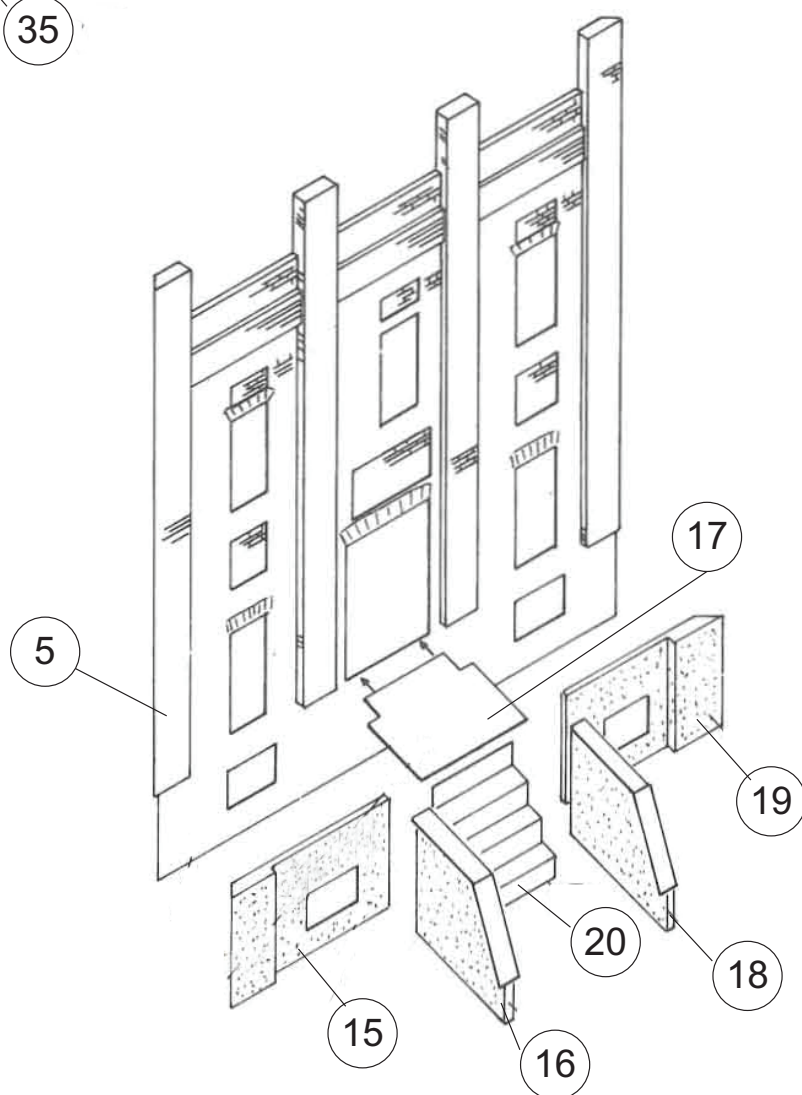
Start construction of this kit by gluing the window frames into the walls, followed by the glass.

Glue the basement walls into place on the lower parts of the brick walls, ensuring that the columns align

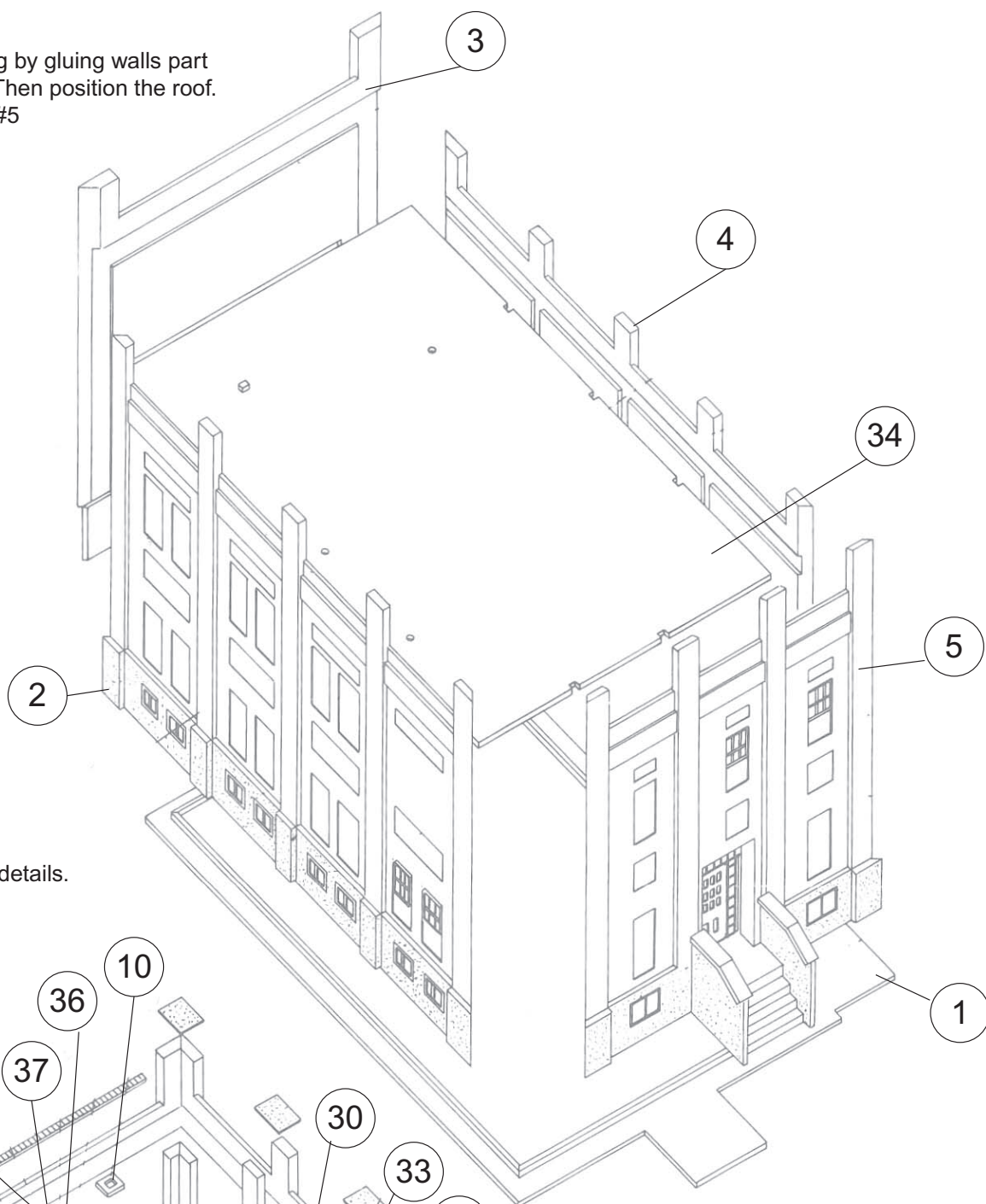




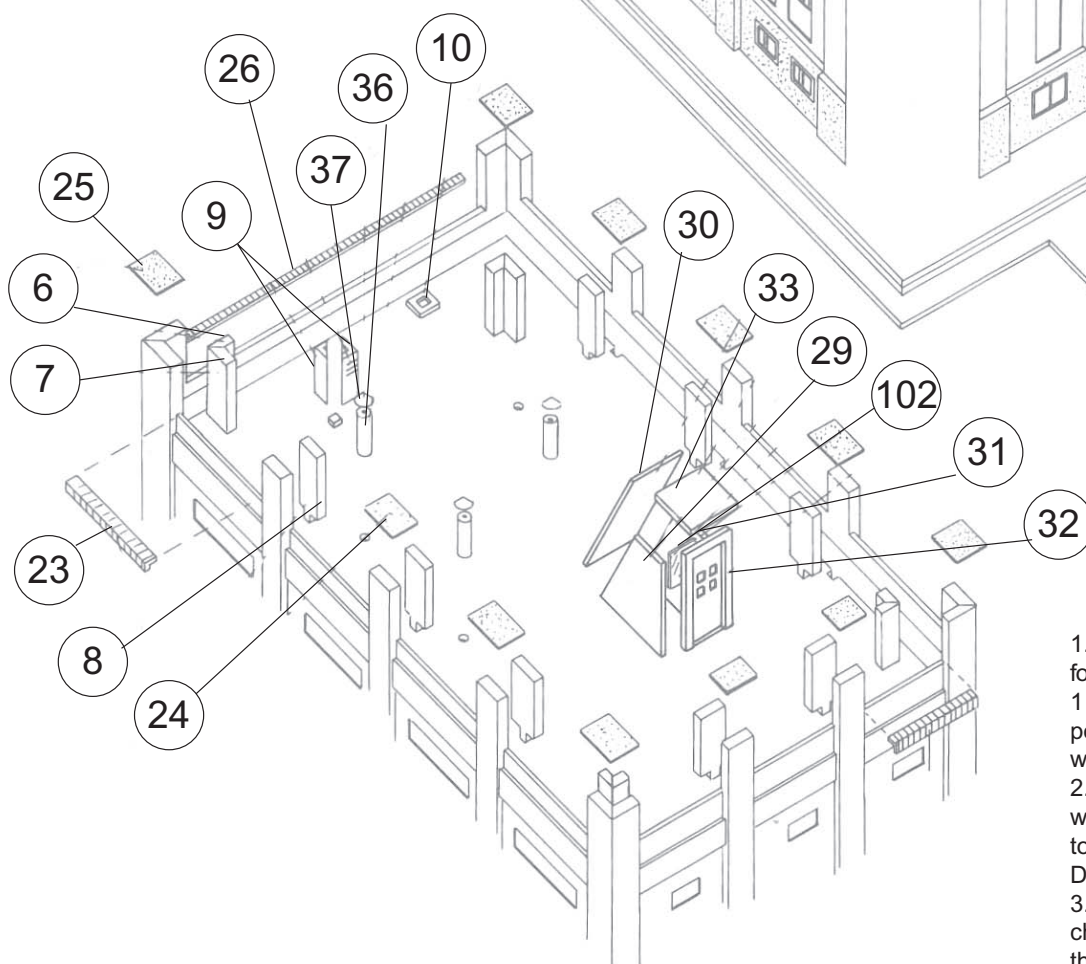
Assemble the porch construction on part 5 followed by the steps in the front of the building



Assemble the building by gluing walls part 2, 3, 4 onto base 1. Then position the roof. Finally add wall part #5



Finally add the roof details.



DECALING

1. After cutting out the decal, dip in water for 10 seconds, remove and let stand for 1 minute. Slide decal onto surface, position and then blot off any excess water.
2. Lightly brush Micro Sol® on top. This will soften the decal allowing it to conform to irregular surfaces. DO NOT TOUCH DECAL while wet!
3. When the decal is thoroughly dry, check for any trapped air bubbles. Prick them with the point of a small pin or hobby knife blade and apply more Micro Sol®.

Now move on to the warehouse building.

Start by gluing doors and windows in place, followed by the "glass".

Glue the basement walls in place on the lower part of the brick walls, taking care to align these exactly.

Assemble the building by gluing walls 39, 40 and 41 to the base part 38, then position wall 57 flush with the side walls.

Add roof trusses parts 52 followed by parts 54 on the platform side and parts 53 on the opposite side.

Glue the roof parts in place, locating the trusses within the location lines under the roof.

The electric cable pipe (58) is positioned through the hole in the roof and against the brick column so that it rests on the meter box.

Glue parts 105 in the slots on parts 45, 46 & 47, then glue parts 46 and 47 in place, lining the corner up, then place one part 104 at each free corner.

Construct the ramp with parts 49, 50 & 51, and glue in place against part 47.

Glue part 45 in place once the two building parts have been joined or located on your layout.

Assemble barrels and cases, and place these and the skids as required.

