



HO Structure Kit

WILLIAMS IND. ELECTRIC MOTORS

933-3788

Thanks for purchasing this Cornerstone kit. All parts are made of styrene, so use compatible glue and paint to assemble and finish your model. PLEASE NOTE: Some parts included in this kit are not needed for construction; keep them for future projects if you wish. Cut lines on the backs of the Base (1), Side Walls (4, 105) and Roof (7) are provided so you can assemble your new kit as a background building if desired. If you wish to paint any parts, we suggest doing so before starting construction.

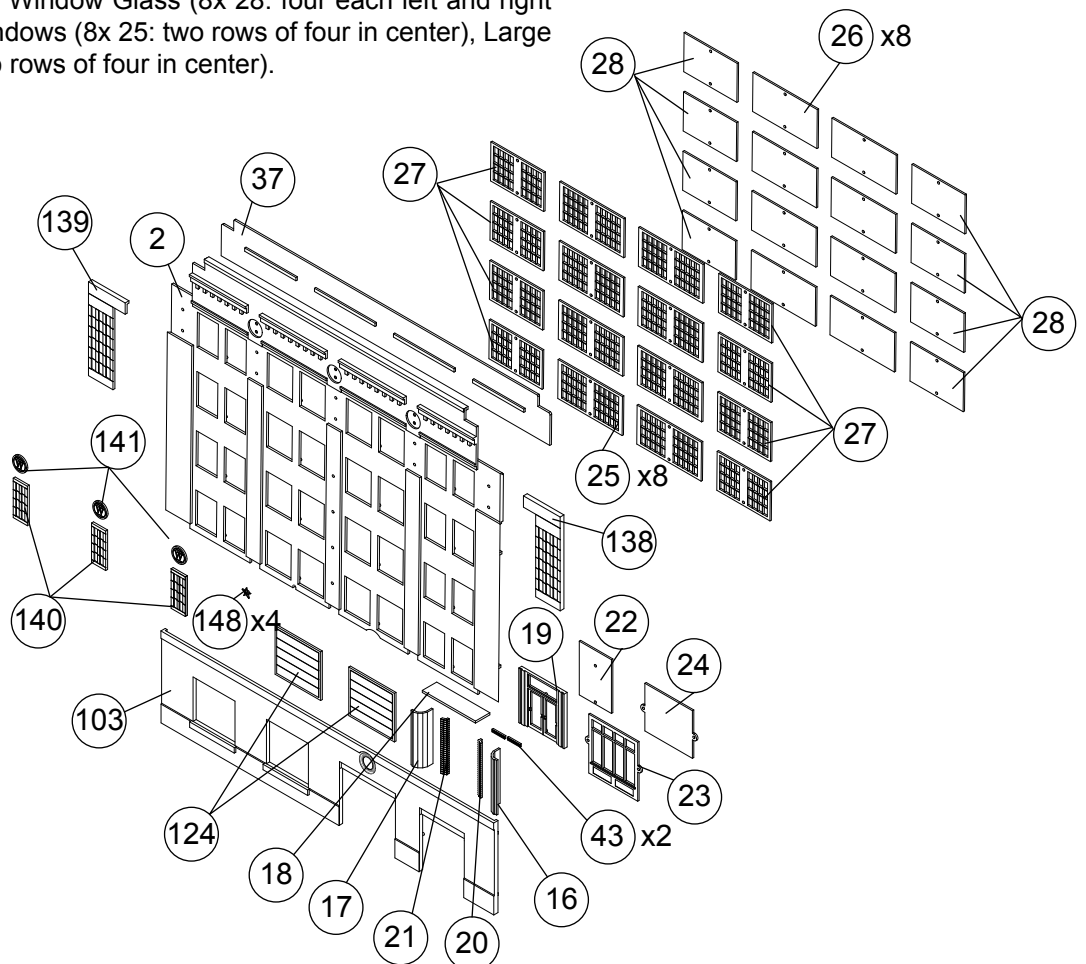
Finding space for a factory was often a problem in early American cities. Ideally, a firm would build close to a river, road or railroad to simplify receiving raw materials and ship finished products. Filling every inch of small and expensive city lots, builders had no choice but to go upward. Early factories were typically only two or three stories tall, owing to weak wooden frames, and people simply weren't willing to climb more than three flights of stairs. Plenty of windows were also needed before electricity became common. The ready availability of strong steel beams, concrete, electricity and elevators early in the 20th century offered a solution, and taller factories became common. To project a positive, modern image, the street side was often built with large windows and incorporated some sort of decorative trim. Over the years, many were modernized as safety and building codes changed, or converted to office and warehouse space as the manufacturing arm relocated to a new and larger structure in suburban industrial parks. Today, many of these older downtown buildings have been revamped into upscale apartments and offices. Visit your local hobby shop, see the latest Walther's HO Model Railroad Reference Book or log onto walthers.com for more ideas to complete your new model.

DOORS & WINDOWS

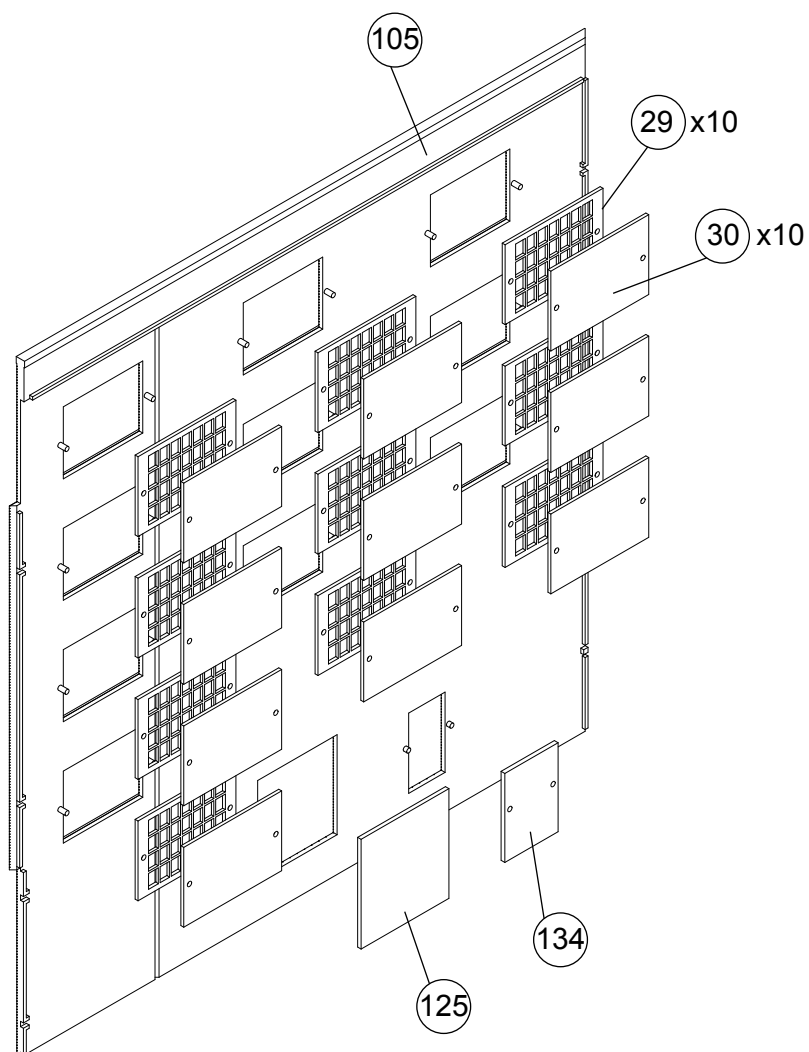
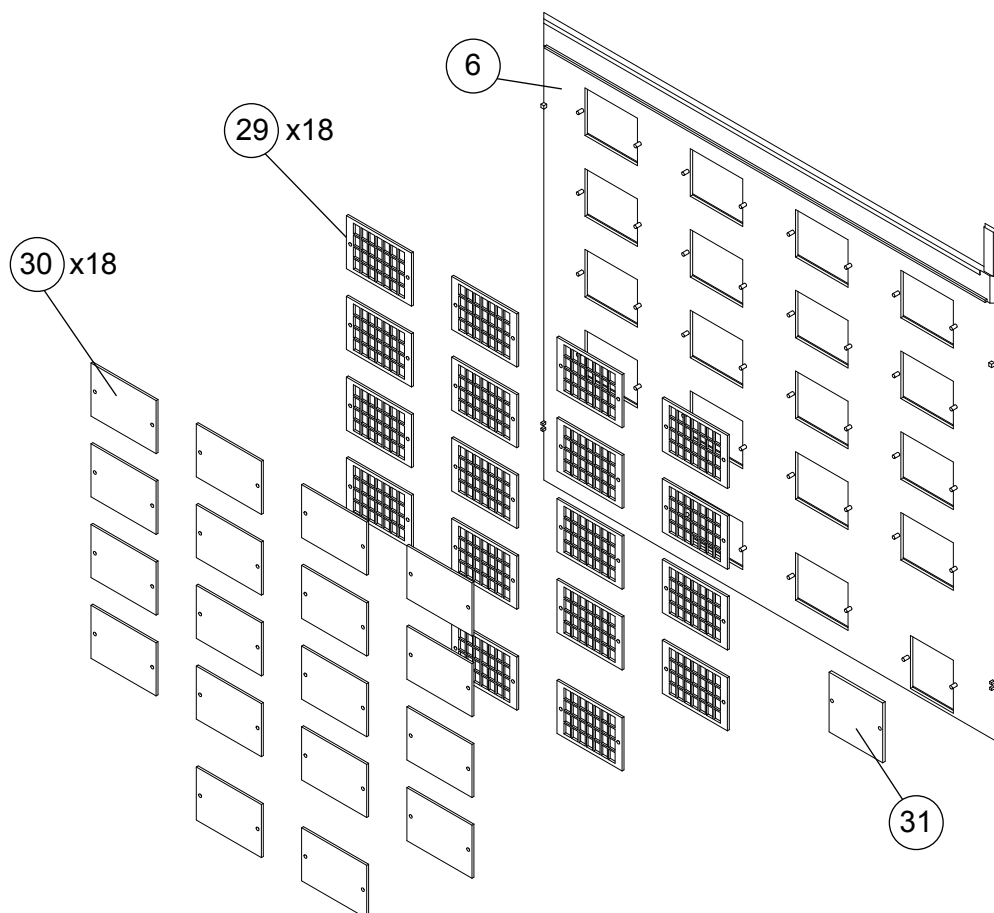
PLEASE NOTE: Locator pins are molded on the backs of all Walls that align with openings in Windows, Glass and Doors. Assemble each in layers as shown.

Ground Floor Front Wall (103): Small Roll-up Doors (2x 124) can be glued in place or left off if you wish to model them open, Office Window (23) and Office Window Glass (24). Glue Front Entry Door Handle (2x 43) and Front Entry Door Glass (22) to Front Entry Door (19) — Entry Door will be installed in step 2.

Upper Front Wall (2): Small Double Windows (8x 27: four each left and right outside edges) and Small Double Window Glass (8x 28: four each left and right outside edges), Large Double Windows (8x 25: two rows of four in center), Large Double Window Glass (8x 26: two rows of four in center).



Rear Wall (6): Single Windows (18x 29), Single Window Glass (18x 30), Double Entry Door (31).



Left Side Wall (105)

Full-Size Structure: Large Roll-up Door (125) may be glued in place or left off to model an open door, Side Entry Door (134), Large Single Windows (10x 29), Large Single Window Glass (10x 30).

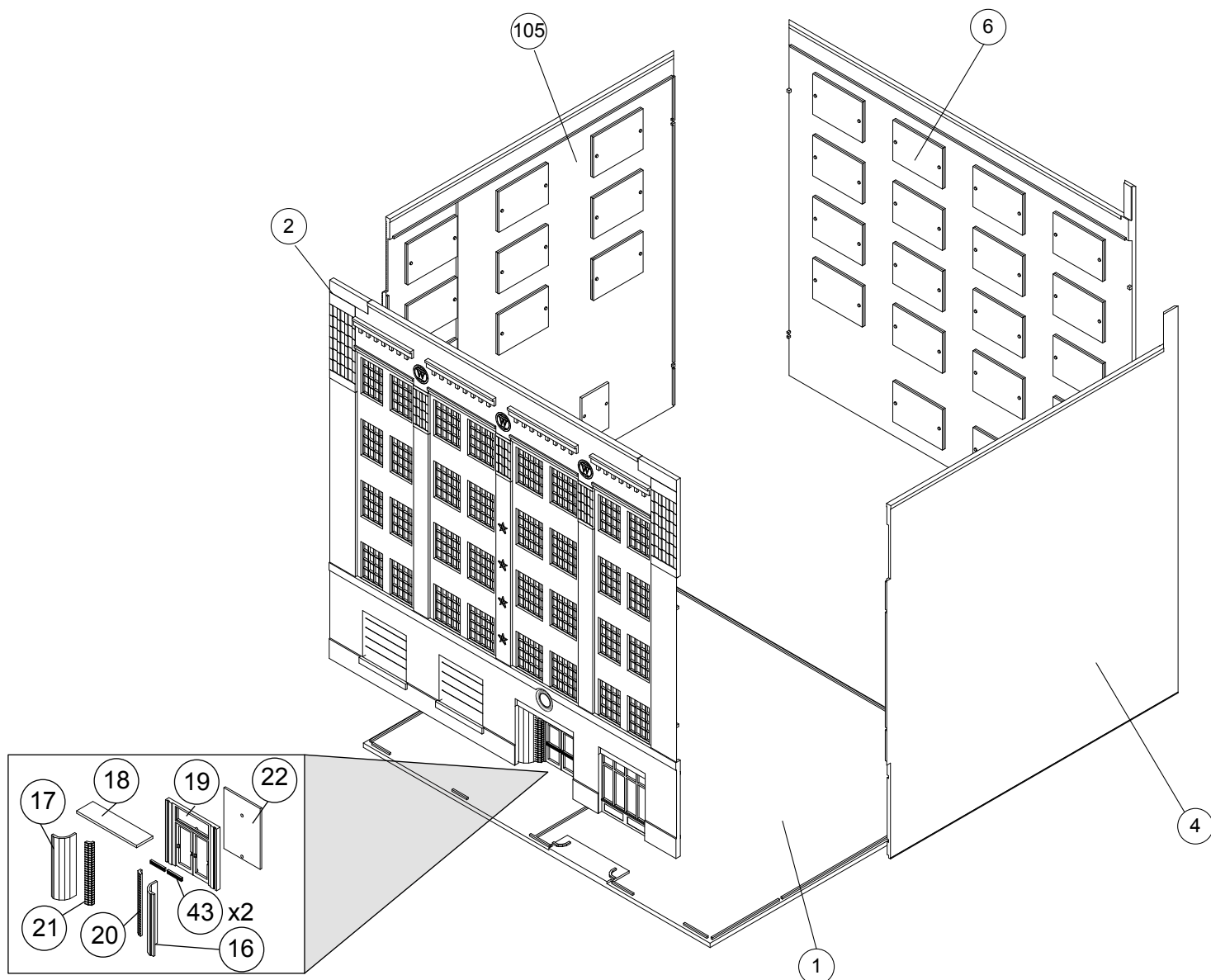
Background Building Option:
Large Single Windows (4x 29), Large Single Window Glass (14x 30).

Front Wall Assembly

PLEASE NOTE: If you're constructing a background building, begin by trimming Base (1), Roof (7) and Right (4) and Left (105) Side Walls using molded cut lines, then follow the appropriate steps below.

1) Note the raised ridges along the edge of Base (1). Using these to align parts, glue Ground Floor Front Wall (103) and Right (4) and Left (105) Side Walls to Base and at inside corners where parts meet.

2) To help with construction of the office entryway, a raised step and small curved ridges are molded on the Base. Note that the Right (16) and Left (17) Decorative Panels are notched on one edge and will be inset slightly from the front wall. Glue the notched edges to the inside ridge on the back of the Ground Floor Front Wall, and in front of the curved ridges on the Base. Test fit the Front Entry Door (19), making sure it sits flush with the Base and the bottom of the Decorative Panels. The ends of the Panels fit the slots on the outer edges of the doorframe; glue these parts together and to Base.



3) PLEASE NOTE: Look carefully at Right (20) and Left (21) Front Entry Side Glass – one “bend” is sharper than the other — this sharp end installs against the Door. Use glue sparingly to attach #20 and #21 to the outside edge of the large rib molded on the doorframe, and the flat surface of the Decorative Panels closest to the door. With tabs facing the rear, glue Entryway Roof (18) to top of completed entry.

4) Align molded ridges in rear of Inner Front Wall (37) with openings in Upper Front Wall (2) and glue together.

5) PLEASE NOTE: Two styles of Art Deco stonework and trim are provided: all parts have locator pins on the back that align with openings in the Upper Front Wall (2). Our cover model and the instructions show parts 138 to 141. Using locator pins and openings glue Large Left (139 or 39) and Right (138 or 38) Stonework to outer edges of Upper Front Wall. Glue Small Stonework sections (3x 140 or 40; the circular details on part 40 should be at the top) to locators. Glue Round Stonework pieces (3x 141: the W logos should face upward, or 3x 39) to openings. Glue Star Nut-Bolt-Washers (4x 148) to openings in center pilaster on Upper Front Wall.

6) Glue Upper Front Wall (2) to Ground Floor Front Wall (103), and to Side Walls at inside edges where parts meet. Glue Rear Wall (6) to Side Walls at inside edges and Base where parts meet.

Elevator Machinery House

7) Left (10) and Right (9) Side Walls: Small Windows (4x 32, two per side) and Small Window Glass (4x 33, two per side). Rear Wall (11), Single Access Door (34).

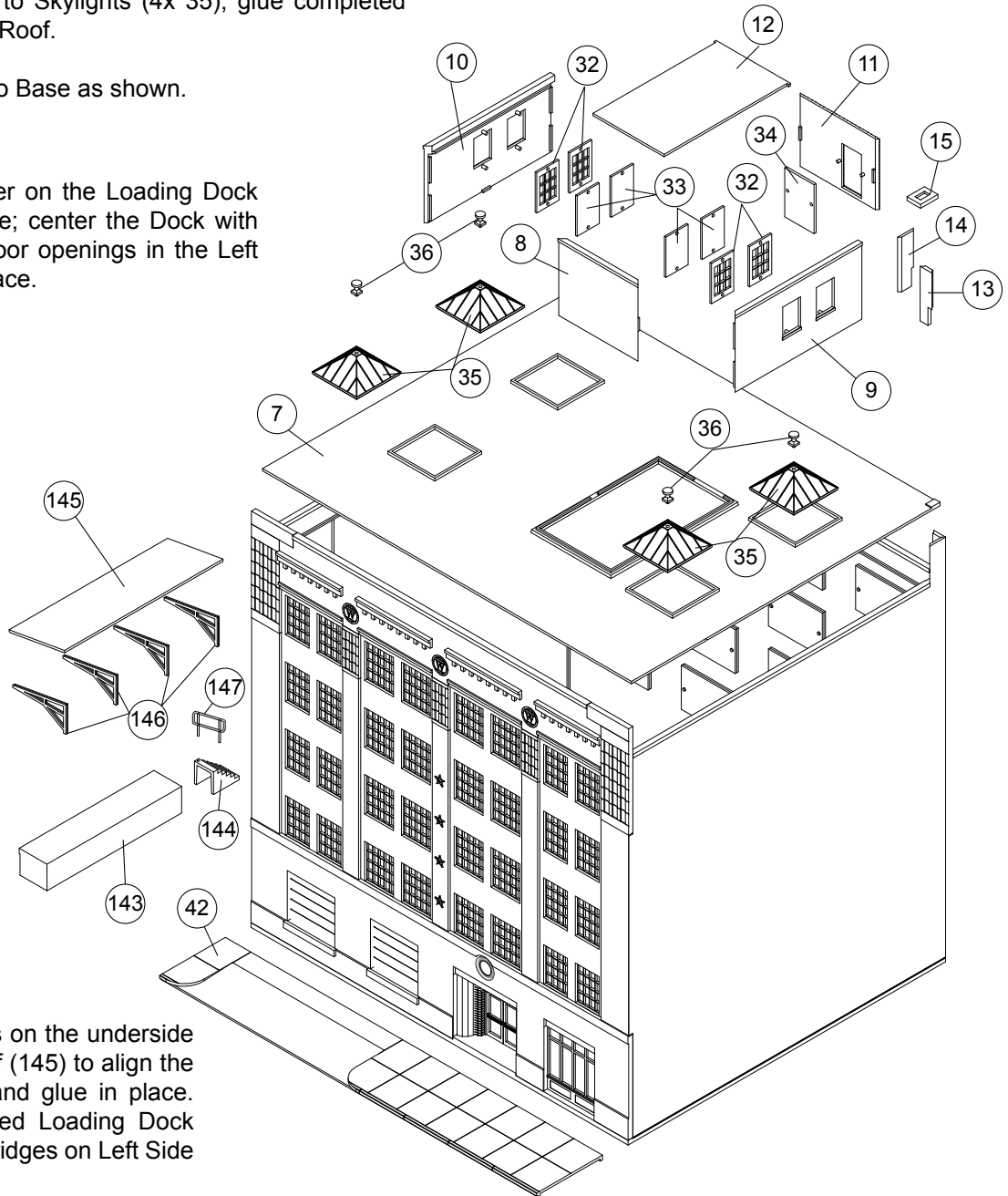
8) Roof (7) can be glued in place, or set on the locating ridges molded on the walls, so it can be removed to add interior details or lighting (sold separately). Glue Chimney Sides (13, 14) and Cap (15) together – PLEASE NOTE if you are building your model with a removable roof, glue these parts to the Roof only. For a permanent Roof, glue the Chimney Assembly to the Roof and to the chimney details on the Right and Rear Walls.

9) Using the raised ridge on Roof (7) to align parts, glue Machinery House Walls (8, 9, 10, 11) to Roof and at inside corners where parts meet. Machinery House Roof (12) may be glued in place or set on the locating ridges molded on the walls, so it can be removed to add interior details or lighting (sold separately).

10) Glue Vents (4x 36) to Skylights (4x 35), glue completed Skylights to openings in Roof.

11) Glue Sidewalk (42) to Base as shown.

12) Note that the bumper on the Loading Dock (143) is the outside edge; center the Dock with the Freight and Entry Door openings in the Left Side Wall, and glue in place.



13) Use the raised ridges on the underside of the Loading Dock Roof (145) to align the Roof Trusses (4x 146) and glue in place. When dry, glue completed Loading Dock Roof assembly to raised ridges on Left Side Wall.

14) Glue Dock Stairs (144) to left end of Loading Dock, and to Rear Wall. Glue Handrail (147) to mounting points on outside edge of Dock Stairs.

SIGN

To mount signs, simply cut the desired name and using a small drop of white glue on the back, glue in place.