

CHIMINEYS

Large Chimney: Glue Brick Sides and Ends together and to Chimney Cap.

Small Chimney: Glue left and right halves together.

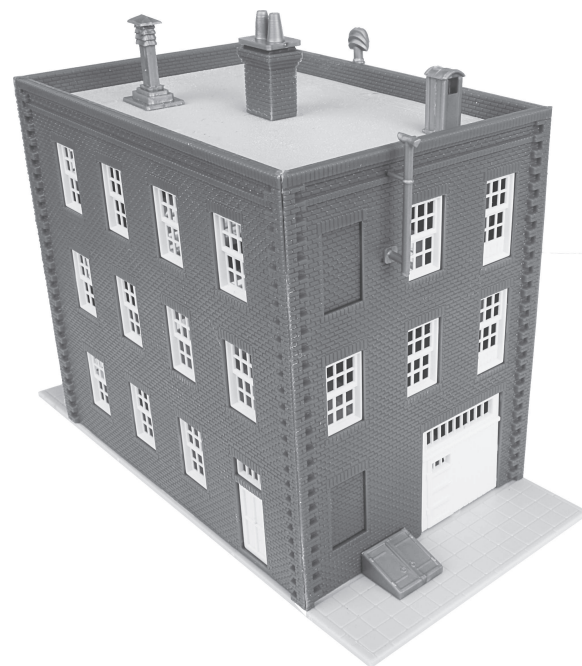
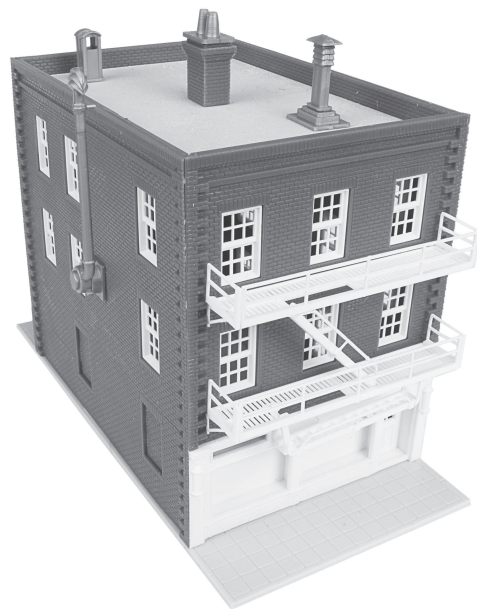
Steel Chimney: Glue Chimney to Base as shown.

Photos show suggested locations: completed Chimneys may be glued at any desired location on Roof.

FINAL DETAILS

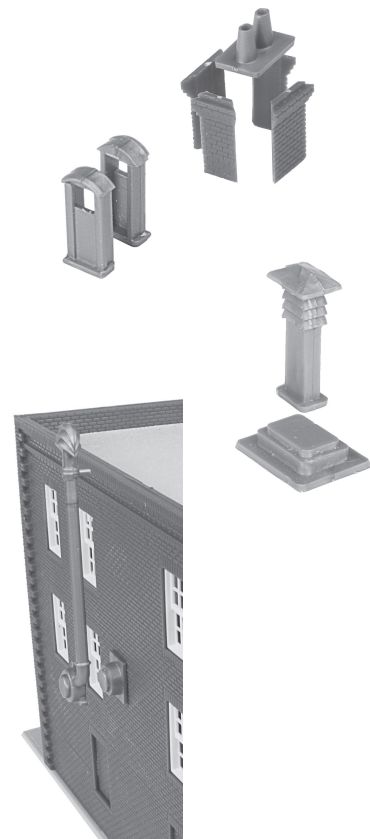
Coal Bin: Glue to rear of Base alongside Rear Entry Door as shown.

Photos show suggested locations: Motorized Blower and Smokejack may be glued at any desired location on Side or Rear Walls.



PAPER SIGNS

1) Using your hobby knife and a small ruler carefully cut the printed-paper signs just outside the edges. Apply a tiny bit of white glue on the back and glue the signs in place where you wish.



MAKING RAILROAD HISTORY **WALTHERSTRAINLINE™** 931-903 Consolidated Manufacturing

Thanks for purchasing this WaltherTrainline® kit. Please read these instructions and study the drawings before starting. Please Note: This kit includes some extra parts that are not needed for assembly. Keep them for future projects or discard them.

Finding space for a factory was often a problem in early American cities. Ideally, a firm would build close to a river, road or railroad to simplify receiving raw materials and ship finished products. Filling every inch of small city lots, builders had no choice but to go upward. Most factories however couldn't be more than two or three stories tall, owing to weak wooden frames, and before elevators, people simply weren't willing to climb more than three flights of stairs! Plenty of windows were also needed before electricity became common. Over the years, many were modernized to comply with safety and building codes, and permit the use of powered machinery. But as firms were consolidated or expanded, bigger buildings were needed so the older facilities were sold and converted into apartments and offices, a role many still serve today. Visit your local hobby shop; see the latest Walther's HO Model Railroad Reference Book or log onto walthers.com for more ideas to complete your new model.

Building Tips:

Always cut parts from the sprues with a hobby knife; work slowly and carefully; make several light passes with your knife rather than trying to cut through all at once. For best results, cut between the part and the sprue then carefully scrape away any remaining plastic on the part.

While painting is optional, it's easier to do before beginning assembly and can be done using acrylic (water-based) paints, available at many hobby and craft stores.

Test fit all parts before gluing to make sure they fit correctly.

Attach plastic parts using cement for styrene (sold separately). Please read and follow the directions and safety precautions, and work in a well-ventilated area. Use glue sparingly, a little will do the job, and apply it on the inside where parts meet for a neat appearance.

DOORS & WINDOWS

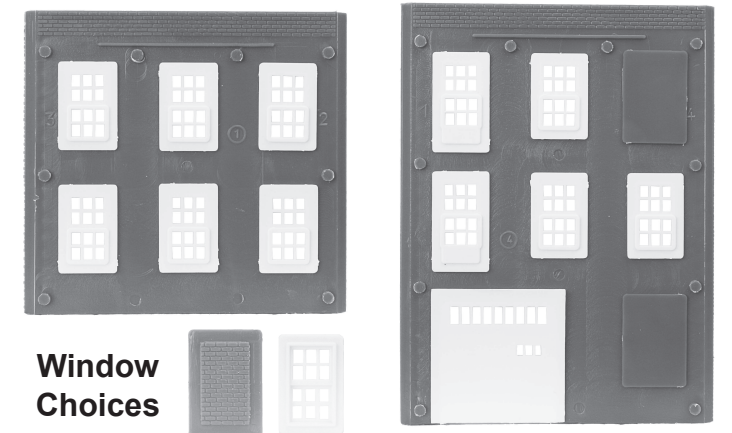
If desired, use acetate (not included) for window glass. Cut pieces slightly larger than the Windows and Doors, and glue in place with white glue. PLEASE NOTE: The raised area on the back of each window is the bottom, be sure windows are installed correctly before gluing in place – optional brick inserts are provided that can be installed in place of some windows if desired.

Front Wall: Glue six Standard Windows to openings.

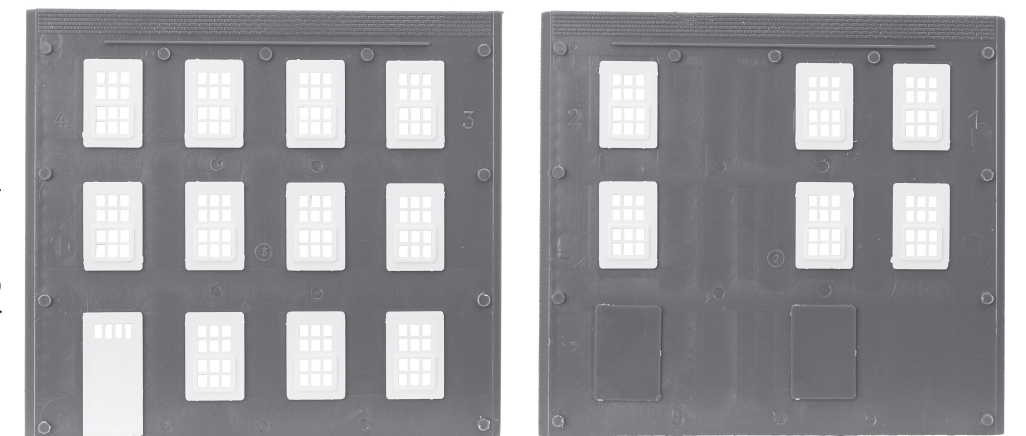
Left Wall: Glue eight Standard Windows to openings.

Right Wall: Glue 11 Standard Windows and Entry Door with Transom as shown.

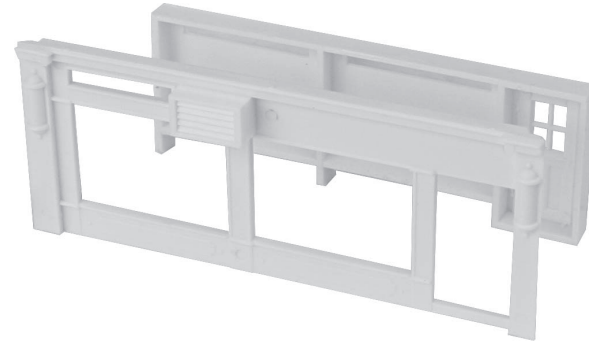
Rear Wall: Glue five Standard Windows to openings at left, two Large Windows at right and Rear Entry Door to large opening.



Window Choices



1) Glue Front Door and Window Block to rear of Front Entry – do not glue to Front Wall at this time.



2) Using the raised ridges on the Base as a guide to align corners, glue the Left Side Wall, Right Side Wall and Rear Wall at each inside corner and to the Base. Glue the Front Wall to the upper edges of the Left and Right Walls as shown. Glue the Front Entry to the lower edges of both sidewalls, the lower edge of the Front Wall and the Base.

3) Note the raised ridges directly below the brick detail on the top, inside edge of each Wall. Glue the Roof to these ridges.

FIRE ESCAPES

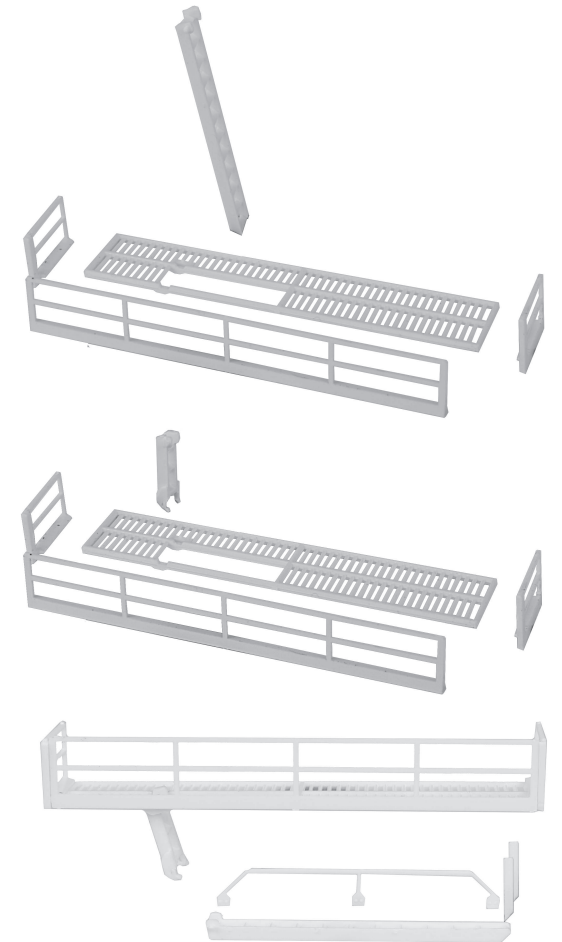
1) Using the photo as a guide, glue four Brackets to Front Wall as shown and allow to dry. Be sure the Upper and Lower Decks are aligned as shown, with the large opening to the left, and glue to the Brackets.

2) Note the Large Fire Escape Ladders (2x) have small pins molded at one end (top) and angled ends at the other (bottom). Carefully thread a Ladder through the opening on the Upper Deck: glue in place where the pins touch, and the angled end touches the Lower Deck. Glue a Handrail to the outside edge of the Fire Escape Ladder as shown.



4) Glue the flat ends of both Ladder Braces to the last step of the other Large Ladder, facing up as shown. Insert the pins on the Large Ladder into the openings on the Small Ladder, with the Braces touching the bottom of the Lower Deck, glue Ladder assembly in place.

5) Glue the Left, Right and Front Handrails to the outer edge of each Deck.



3) Note the Small Fire Escape Ladder has small pins molded at one end (top) and small hooked ends at the other (bottom). Carefully thread the Ladder through the opening on the lower Deck and glue in place where the pins touch.

