



HO Structure Kit

MISSION-STYLE FREIGHT HOUSE

933-4056

Thanks for purchasing this Cornerstone Series™ kit. All parts are made of styrene plastic, so use only compatible glue and paint to finish your model. Please read these instructions and study the drawings before starting. PLEASE NOTE: This kit may be combined with the Mission-Style Brick Depot (#933-4055, sold separately) to build a larger facility, with minor modifications as noted in these instructions.

From the earliest days, the “wild west” has held a special fascination for Americans, fueled in part by railroads serving the region. Perhaps no other road capitalized so heavily on this romantic appeal than the Santa Fe. Along with its beautiful advertising, the road borrowed freely from Native American cultures to decorate everything from boxcars carrying the road’s traditional ball-and-cross logo based on a good luck symbol, to named passenger trains like “The Chief.” Santa Fe also paid homage to the Spanish influence of the region in the design of many of its stations. Typically found in more important towns where the railroad handled a higher volume of both passengers and express, and where there was stiff competition from other railroads, more elaborate brick structures were constructed in the Mission Revival style after 1900. Many communities on the eastern end of the railroad received these so-called “county seat depots,” which were built into the 1930s. The overall design shared elements with Mission Style depots built on the west end of the railroad, as well as a similar floor plan with separate waiting rooms for men and women, and an agent/operator’s office. Stations handling a substantial amount of express, mail and checked baggage were designed with an attached freight house built in the same general style (this can be modeled with the Mission-Style Brick Depot (#933-4055, available separately), and this same design was also adapted to a stand-alone freight house for cities where the volume of express traffic was heaviest. Although nowhere as elaborate as the station itself, the freight house did include a bit of decorative concrete at the roofline, but most of its color came from the numerous small windows and larger side doors painted in standard company colors. Sturdily built, many have stood the test of time and are still standing alongside their companion stations after more than a century. As they were closely associated with the city they served, many have been preserved and repurposed as government offices, libraries and more.

See your local hobby dealer, check out the current Walthers HO Model Railroad Reference Book or visit us online at walthers.com for figures, scenery materials, and other details to complete your new freight house scene.

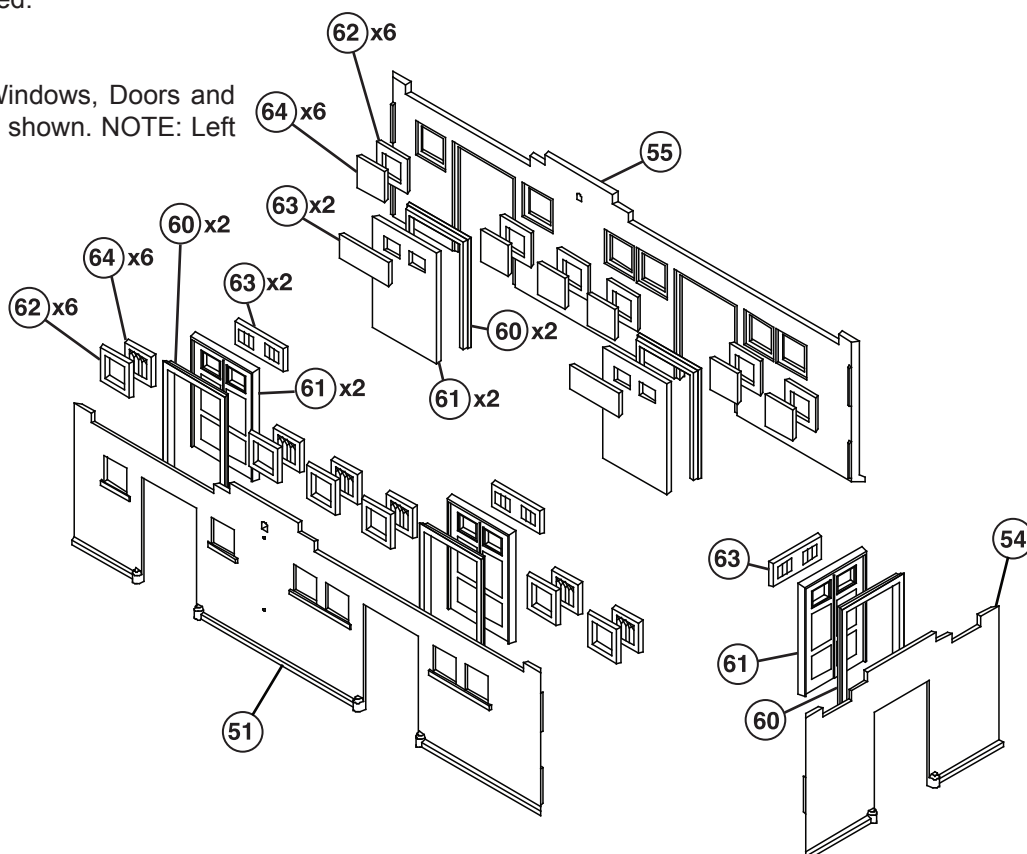
PLEASE NOTE: If you’re combining your model with the Mission-Style Brick Depot (#933-4055, sold separately), the Left Side Wall (52) will not be used.

1) DOORS & WINDOWS

Note the correct orientation of all Windows, Doors and Glass and glue to inside of Walls as shown. NOTE: Left Wall (52) has no Windows or Doors.

Front Wall (51) & Rear Wall (54):
Freight Door Frames (2x 60);
Freight Doors (2x 61), Freight
Door Glass (2x 63); Windows (6x
62); Window Glass (6x 64)

Right Side Wall (54): Freight Door
Frame (60); Freight Door (61);
Freight Door Glass (63)



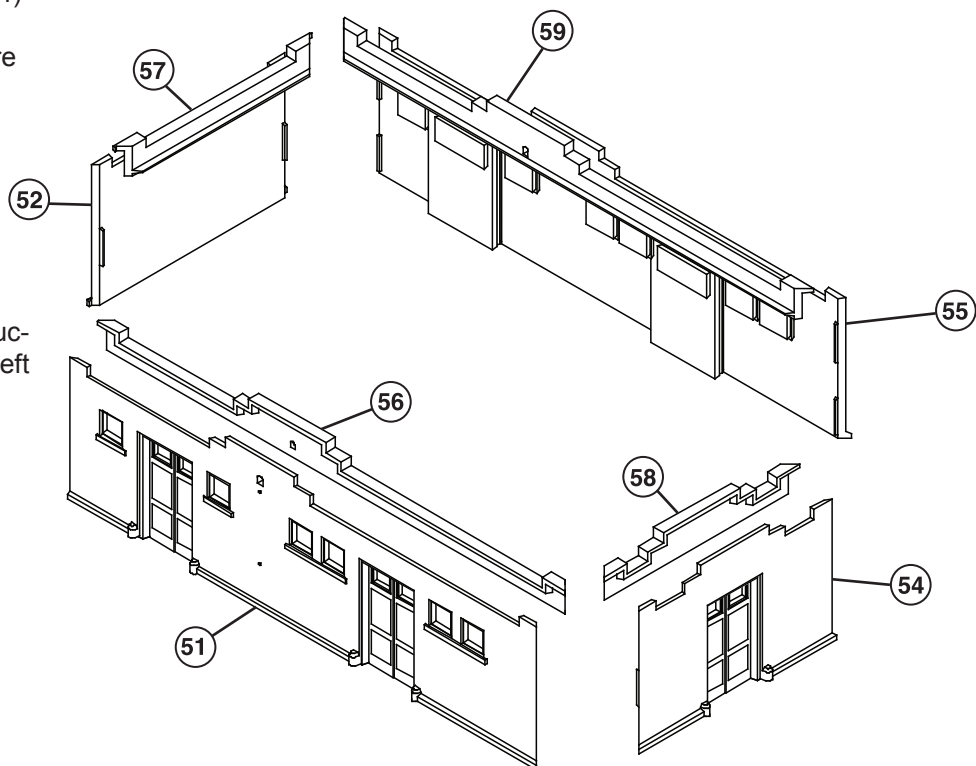
2) WALL INSERTS

Glue Front Insert (56) to Front Wall (51)

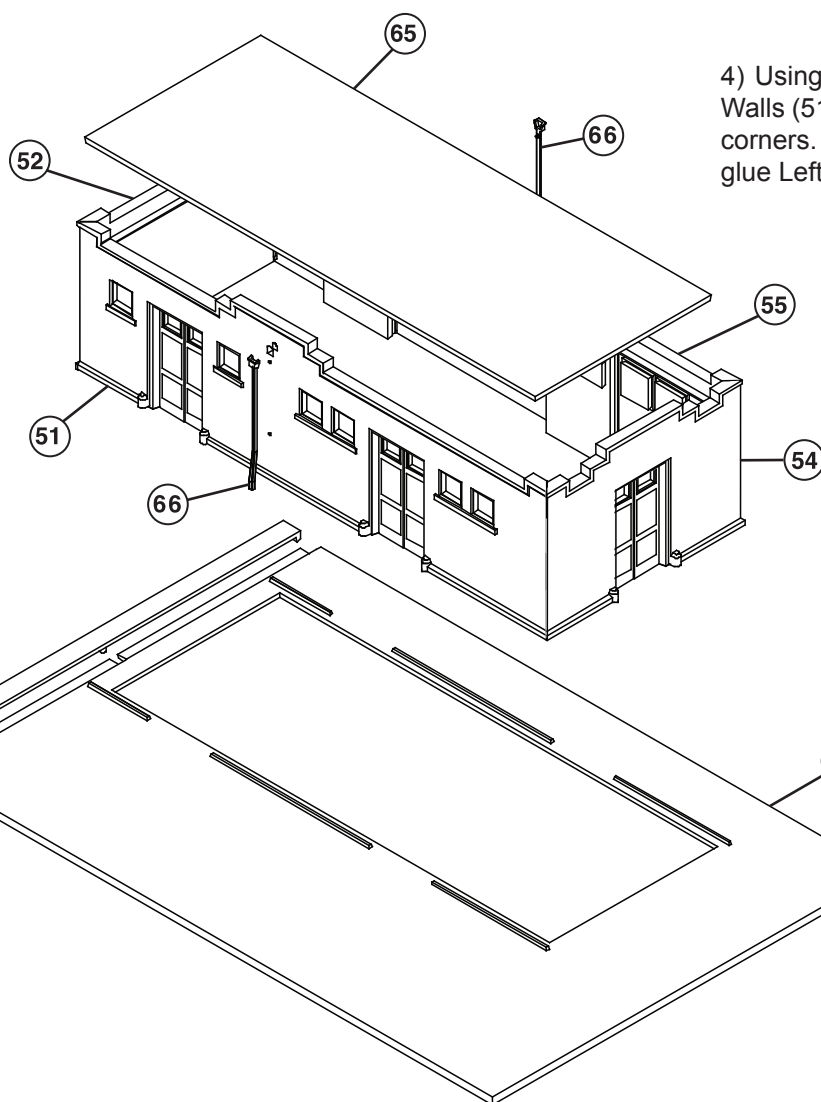
Glue Right Insert (58) to Right Side Wall (54)

Glue Rear Insert (59) to Rear Wall (55)

PLEASE NOTE: For a stand-alone structure only, glue Left Insert (57) to Left Wall (52)



3) PLEASE NOTE: For a stand-alone structure only, glue Base Extension (44) to left edge of Base (3).



4) Using raised ridges on Base as a guide, glue Walls (51, 54, 55,) in place as shown and at inside corners. NOTE: For a stand-alone structure only, glue Left Wall (52) as shown.

5) Roof (65) may be set in position to add interior details or lighting (sold separately) or glued to completed wall assemblies.

6) Glue Downspouts (2x 66; 1 per wall) to mounting points in Front and Rear Walls as shown.

OPTIONAL BASE ASSEMBLIES

Stand-Alone Depot: Glue Base Extension (2) to right edge of Depot Base (1) as shown.

Combined Structure: Align Depot Base (1) with Freight House Base (3) and glue edges together.

Stand-Alone Freight House: Glue Base Extension (44) to left edge of Freight House Base (3) as shown.

