



N Structure Kit

RAILCAR RESTORATION & CHARTER

933-3825

Thanks for purchasing this Cornerstone Series® kit. Please read all instructions before starting. All parts are molded in styrene plastic, so use compatible paints and glues to finish your model.

Keeping railroad equipment up and running requires a lot of specialized labor, tools and materials. Most of this work is done at a railroad's central shop complex, but there are also private firms providing a full range of services.

Some handle everything from fairly simple tasks such as repainting or wheel grinding, all the way up to rebuilding cars as well as locomotives from the rails up. As such, it's no longer necessary for a shortline to have its own shop, and many larger railroads use these firms to supplement their forces or handle special projects.

Many of these operations started out in the 1970s as bigger railroads began shedding their first generation diesels, which were often in good operating condition, or need only minor repairs to stay in service. The glut of available power made prices very attractive, and a refurbished engine could be purchased for a fraction of the cost of a new one. Some of these firms built up pools of locos and expanded into the equipment leasing business while others concentrated solely on repairs.

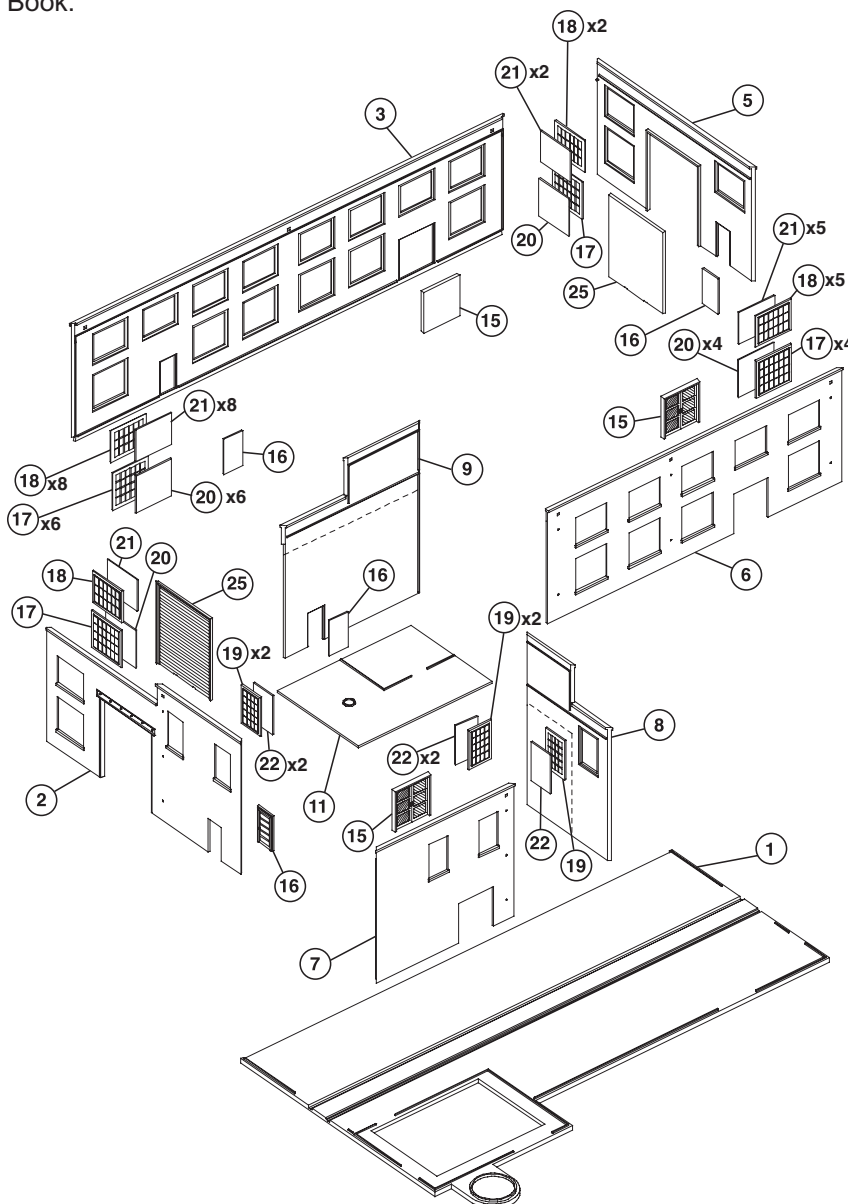
The shop complex is the heart of these operations, and many were converted from older factories and warehouses that were no longer being used. The high ceilings and open interiors provided plenty of work space, and many had been constructed with overhead doors and rails in the floor, making it easy to bring equipment inside for repairs.

For additional items to detail your scene, stop by your local hobby shop, visit us online at waltherscornerstone.com, or see the latest N&Z Walthers Model Railroad Reference Book.

1. Glue the windows (17, 18, 19) and doors (15, 16, 25) into the openings in the backs of the walls (2, 3, 5, 6, 7, 8, 9).

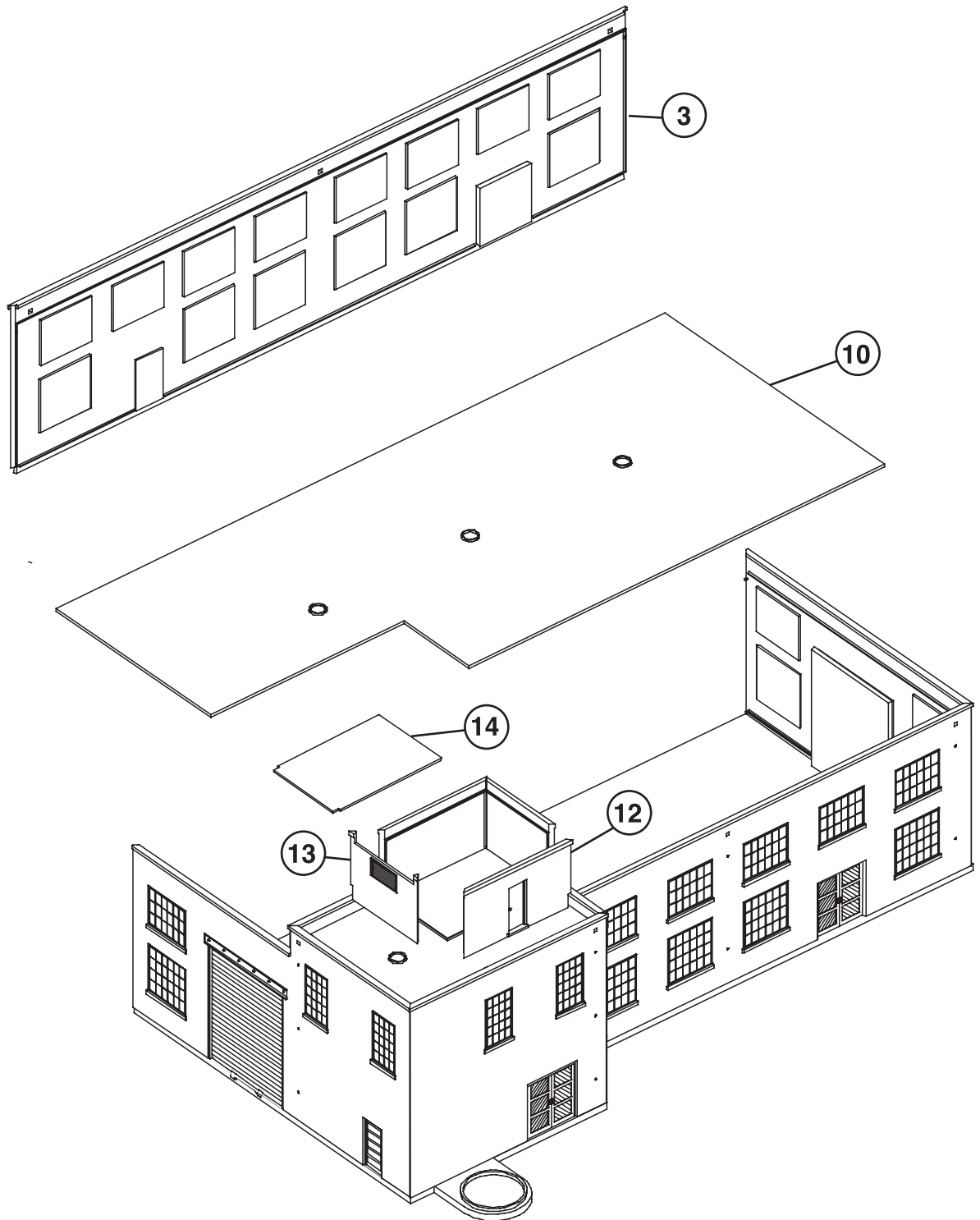
2. Glue the "glass" (20, 21, 22) onto the backs of the appropriate windows.

3. Glue the walls (2, 5, 6, 7, 8, 9) and roof (11) together and to the base (1). Note: Start by gluing wall #2 to the base and then add wall #'s 7 and 8. Next glue roof #11 in place and then add on wall #9. Follow by gluing on wall #'s 5 and 6.



4. Glue the main roof (10) in place. Glue the long side wall #3 in place.

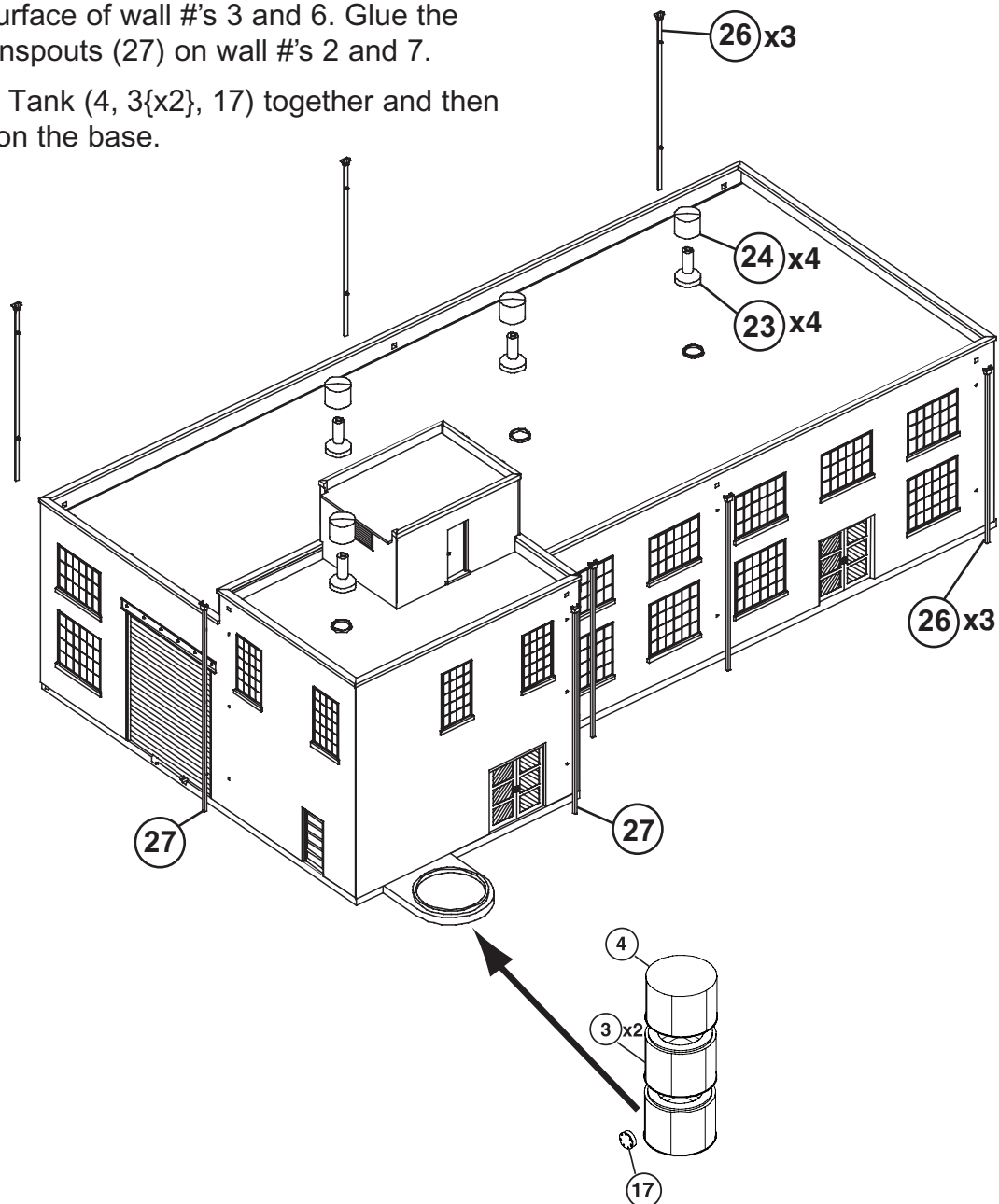
5. Glue the headhouse walls (12, 13) in place on roof #11.
Then glue on the headhouse roof (14).



6. Glue the vents (29, 30) together and in place on the roofs. (If desired, add the large decal to walls 6 and 3 before starting step 7.)

7. Glue the short downspouts (26) into the holes in the outer surface of wall #'s 3 and 6. Glue the longer downspouts (27) on wall #'s 2 and 7.

8. Glue the Tank (4, 3{x2}, 17) together and then to the pad on the base.



DECALING

1. After cutting out the decal, dip in water for 10 seconds, remove and let stand for 1 minute. Slide decal onto surface, position and then blot off any excess water.

2. Lightly brush Micro Sol® on top. This will soften the decal, allowing it to conform to irregular surfaces. DO NOT TOUCH DECAL while wet!

3. When decal is thoroughly dry, check for any trapped air bubbles. Prick them with the point of a small pin or hobby knife blade and apply more Micro Sol®.

Note: The decal provided in this kit has artwork for you to decal N Scale Passenger cars to go along with your Charter Railshop

PAPER SIGNS

Trim out the paper sign with scissors or sharp knife. Brush a light coat of white glue over the back of the sign. Place into position and press permanently into place with your fingers.

9. Finally assemble the rest of the tanks as shown. The tanks can be placed around the building based on the modelers discretion.

