



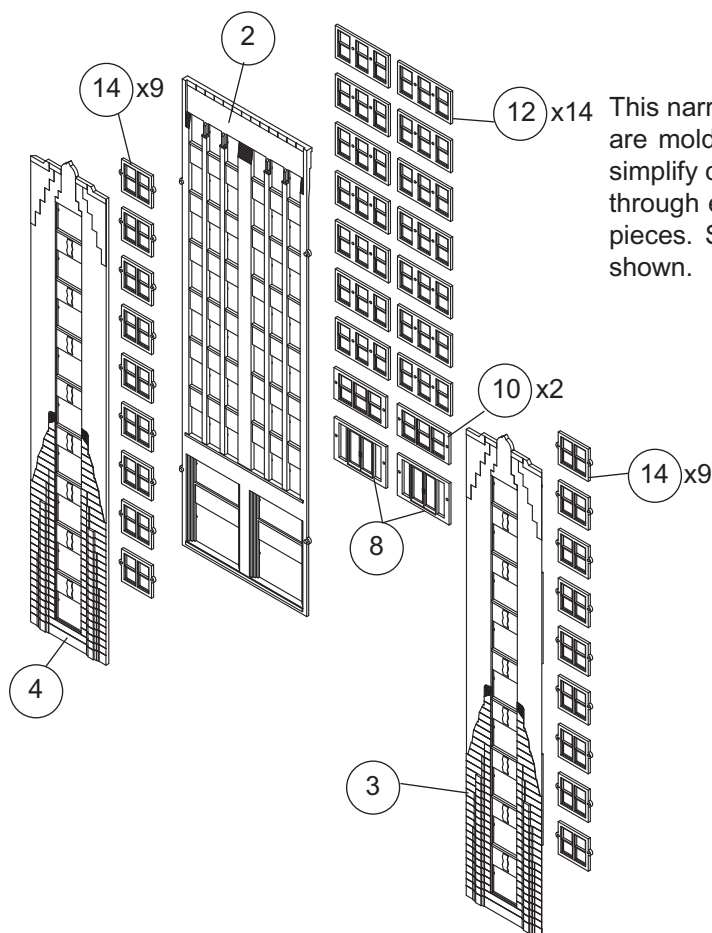
HO Structure Kit HIGH-RISE APARTMENT 933-3770

Thanks for purchasing this Cornerstone® kit. All parts are made of styrene plastic, so use compatible paint and glue to complete your model. PLEASE NOTE this is a partial kit, designed for use as a scenic background building, that can be made narrower if desired. Please study the drawings and read all instructions before starting assembly.

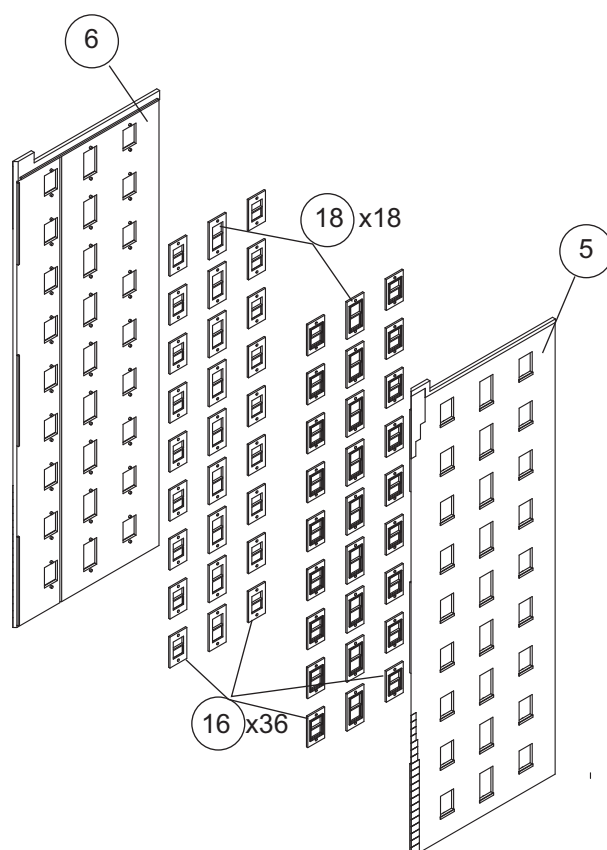
Demand for suitable housing was always a problem in cities where land was limited by natural and man-made obstacles. As waves of immigrants arrived and demand exceeded what was available, older homes were converted into tenements, with the first floor often remodeled as a storefront. Following sweeping social reforms that established building regulations and zoning codes, a new generation of city apartments began appearing in the 20th century. With a sturdy steel skeleton of I- or H-beams, these structures could be built with multiple floors and elevators switched from a novelty to a necessity.

Changing times and a population on the move often brought once upscale buildings into decline, but many remained in use as apartments for decades, and are still in use with modern touches today.

For more ideas to detail your scene, ask your dealer, visit walterscornerstone.com online or see the latest Walthers HO Scale Model Railroad Reference Book.

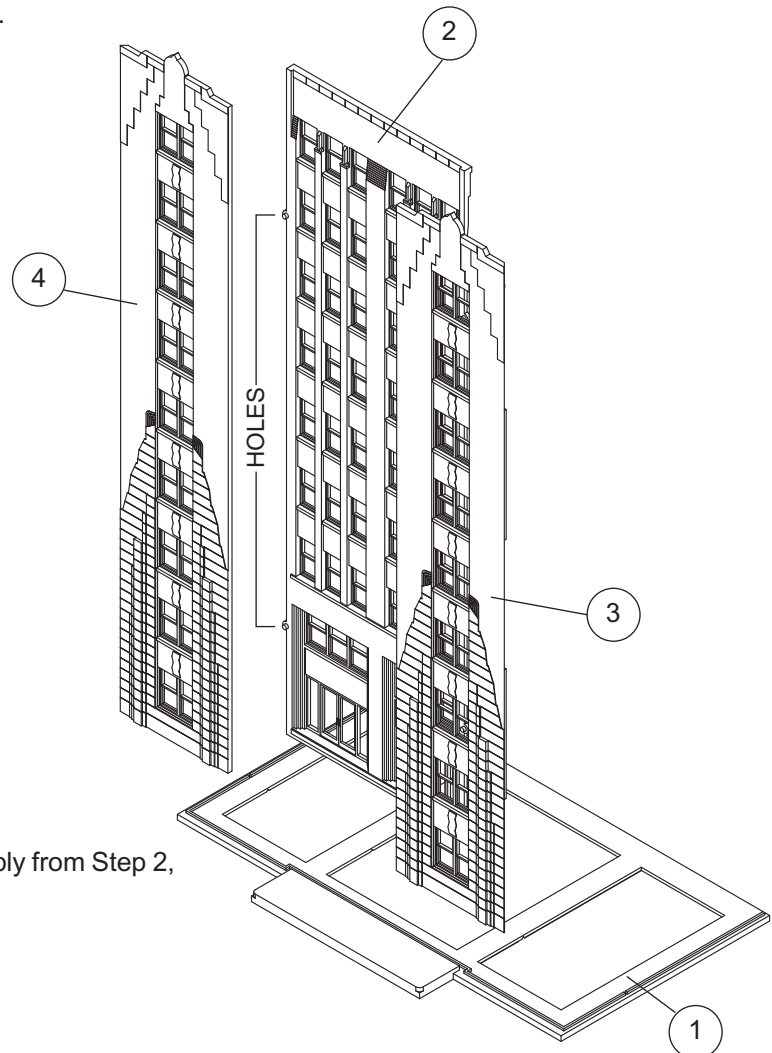


This narrow profile kit is designed for use against a backdrop. Grooves are molded in the Roof (#7), Side Walls (#5 & 6) and Base (#1) to simplify cutting, if a narrower building is required. Make several passes through each groove with a sharp hobby knife then carefully snap the pieces. Smooth the edges with fine sand paper, and assemble as shown.

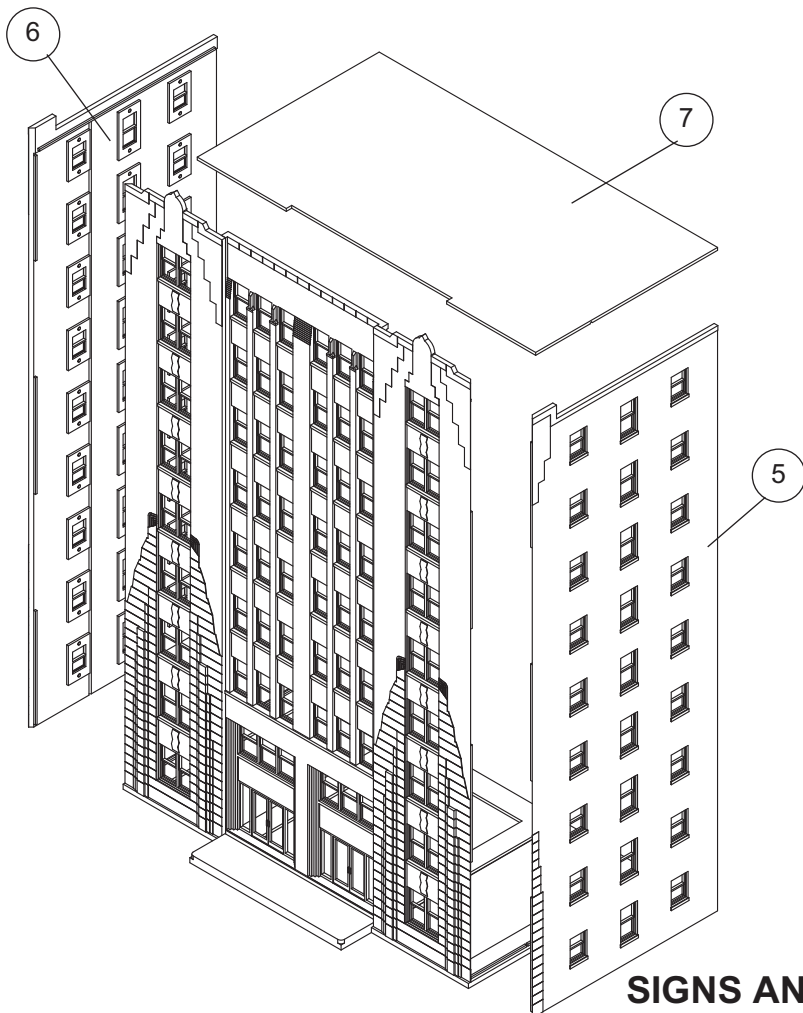


1. If you wish to paint the walls, and/or doors and windows, do this before starting assembly. Glue Entrance Doorway (#8) and windows (#10, 12) to Center Front Wall (#2). Glue Windows (#14) to Front Walls (#3 & 4). Glue Windows (#16 & 18) to Side Walls (#5 & 6). Cut window glazing from the sheet included to about the same size as the windows, and glue in place to the back of windows using white glue.

2. Glue Front Walls (#2, 3 & 4) together using the locating pins and holes. When dry, glue to Base (#1).



3. Glue Side Walls (#5 & 6) to Front Wall assembly from Step 2, then glue Roof (#7) in place.



SIGNS AND BUILDING DETAILS

Cut from sheet with hobby knife or scissors, and glue in place with white glue.