



# HO Structure Kit BENSON'S FIVE & DIME 933-3661

Thanks for purchasing this Cornerstone® kit. Please read these instructions and study the drawings before starting. PLEASE NOTE: All plastic parts are made of styrene, and most simply snap in place. Some may require gluing as noted in the instructions, using cement made for styrene (sold separately). For a more permanent and sturdy structure you can also glue all parts together at the snap fit locations if desired. Doors and Windows are molded as complete subassemblies with "glass" already in place, and windows can be detailed with the printed curtains, and/or the unique window lighting kit, both included with your new model. If you wish to paint any parts, do so before starting construction using plastic-compatible paints.

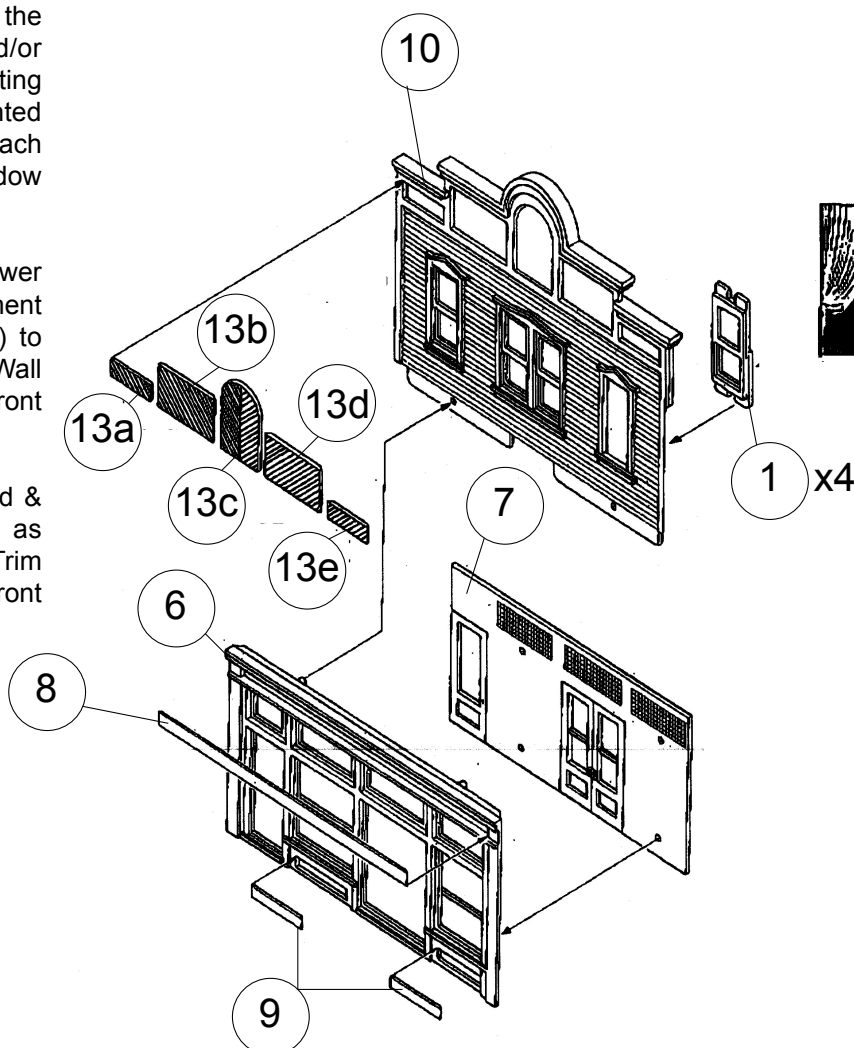
For generations of Americans, there was no better place to shop than the local five-and-ten-cent store. With a style and selection all their own and nothing that cost more than 10 cents, "dime stores" were found in big cities and small towns from coast to coast. For kids, they were the best place to spend a Saturday afternoon, checking out the penny candy, pets, toys, model kits and hundreds of other items. For anyone on a limited budget, they offered affordable household items and sundries to stretch every dollar as far as possible. Many eventually added lunch counters or soda fountains, and stopping there for a treat added to the fun. Rising prices and increasing competition from malls and mega-mart discount stores have made most a thing of the past, but a few are still in operation.

See your local hobby dealer, check out the current Walthers Model Railroad Reference Book or visit us online at [walthers.com](http://walthers.com) for additional figures, scenery materials, vehicles and other details to complete your new model.

PLEASE NOTE: Before completing each wall assembly, you may wish to add the printed-paper curtains, details, and/or interior lighting (as shown on the Lighting instruction sheet). If desired, trim Printed Curtains and Details from sheet and attach to the back of the "glass" on any window with a small piece of tape or white glue.

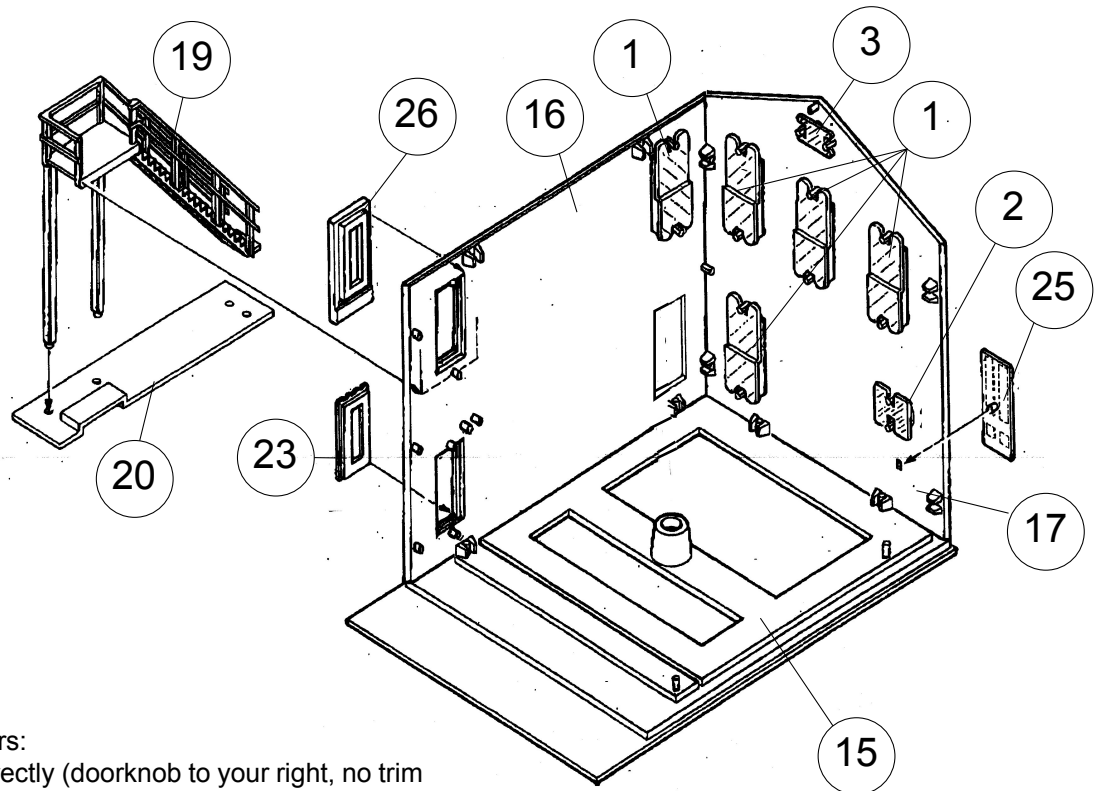
1) Insert Front Door/Window (7) to Lower Front Wall (6). Note the correct placement and insert Window Glass/Frame (4x 1) to back of each Window on Upper Front Wall (10). Insert Upper Front Wall to Lower Front Wall assembly.

2) Glue Upper Trim Panels (13a, b, c, d & e) to openings in Upper Front Wall as shown. Glue Signboard (8) and Lower Trim Panels (2x 9) to openings in Lower Front Wall as shown.



3) Insert completed Front Wall assembly in Base (15).

4) PLEASE NOTE: Side Walls (2x 16) are identical. You can build your model with an Exterior Stairway on the left or right side, or with standard Windows. Note the correct placement and insert Windows (1) to back of each Side Wall; you'll use five windows if you install the upstairs door, and an optional Boarded-Up Window (23) is provided that can be used in any window opening; if used, glue in place. Insert completed Side Walls in Base and Front Wall.

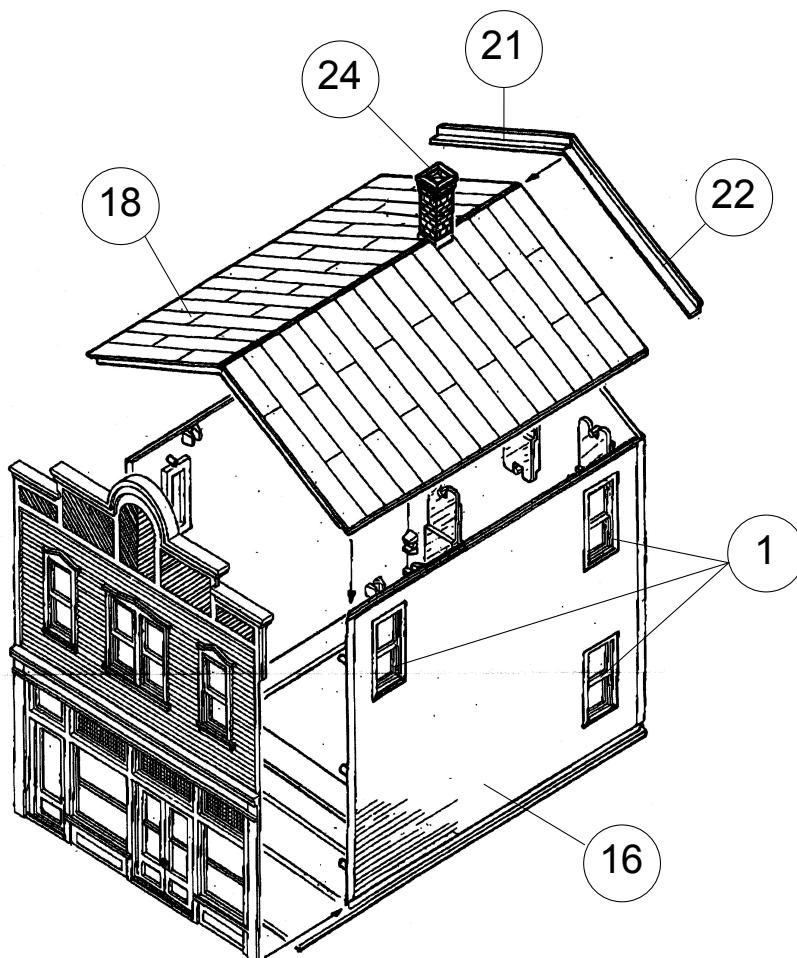


#### Optional Upstairs Door & Stairs:

Make sure the door faces correctly (doorknob to your right, no trim at bottom) and glue Door (26) to an upper window opening in a Side Wall: the instructions and box photo show the Door at the front of the leftside. Insert Exterior Stairs (19) in Stair Landing (20). Align the open platform in the stairway with the Door, and glue completed Stair Landing to Base (15).

5) Note the correct placement and insert Windows (4x 1) to back of Rear Wall (17), or glue the Boarded-Up Window (23) in any window opening if desired. Insert Transom Glass (2) and Attic Window Glass (3) as shown. Insert Rear Door (25) in Rear Wall. Insert completed Rear Wall in Base and Side Walls.

6) PLEASE NOTE: Glue Left (21) and Right (22) Soffits to rear of Roof (18) as shown. Glue Chimney (24) to Roof as shown. When dry, snap completed Roof assembly to completed Wall assembly.



## DECALING

1. After cutting out the decal, dip in water for 10 seconds, remove and let stand for 1 minute. Slide decal onto surface, position and then blot off any excess water.
2. Lightly brush Micro Sol® on top. This will soften the decal allowing it to conform to irregular surfaces. DO NOT TOUCH DECAL while wet!
3. When the decal is thoroughly dry, check for any trapped air bubbles. Prick them with the point of a small pin or hobby knife blade and apply more Micro Sol®.