



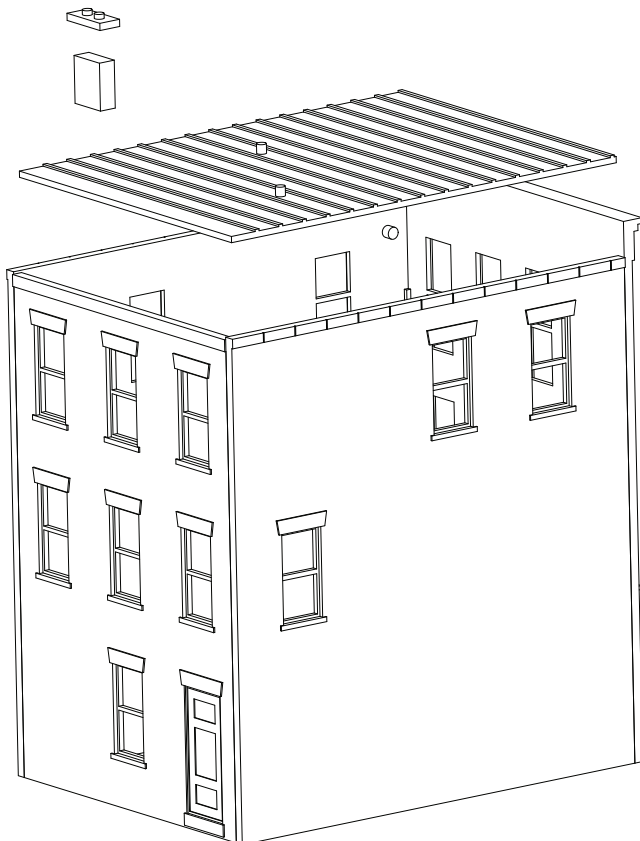
HO Scale Structure Kit
FLOWERS BY TERRY
933-3473

Thanks for purchasing this Cornerstone Series® kit. Please read all instructions and study the drawings before starting. All parts are styrene plastic, so use compatible glue. If you wish to decorate your model, use paints for plastic models. With appropriate details and signs, your finished model fits almost any era.

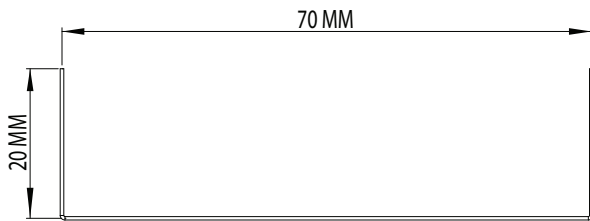
For towns and cities, the business district was always a source of civic pride. With space at a premium, buildings were typically no more than two or three stories tall and packed side-by-side. Brick was the material of choice as it presented a modern image and increased fire safety. In the Victorian era, lavish decoration became common on the front, which was most visible to shoppers. The first floor was used entirely for the business, with the owner living upstairs. In later years, the owner might move to the suburbs, renting the upper floors as offices or apartments. Many buildings remained much as they had been built into the 1950s, when the fronts were updated with steel and glass. Today, many of these historic buildings have been remodeled and painted to match their as-built appearance.

1) Begin assembly by squaring off the front edge of both side walls, and both edges of the back wall using a large file or sandpaper. Note that the side walls fit behind the front wall, and the rear wall fits between the side walls. Glue the walls together and set aside to dry.

2) Test fit the roof, and make any adjustments to obtain a good fit. Do not glue the roof at this time.



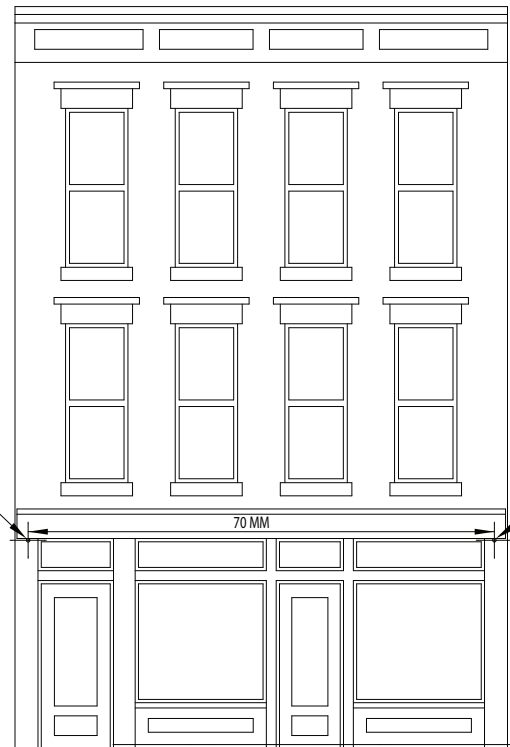
3) The acetate windows and printed interior graphics should be added now. Cut the acetate slightly larger than the window sizes and glue it in place using Walther's Goo® or other contact adhesive. Trim the individual art elements and tape them to the back of the clear glass using a quality tape. The roof can now be glued into position. Single or double stack chimneys are provided. Add as desired, or where shown, on the roof.



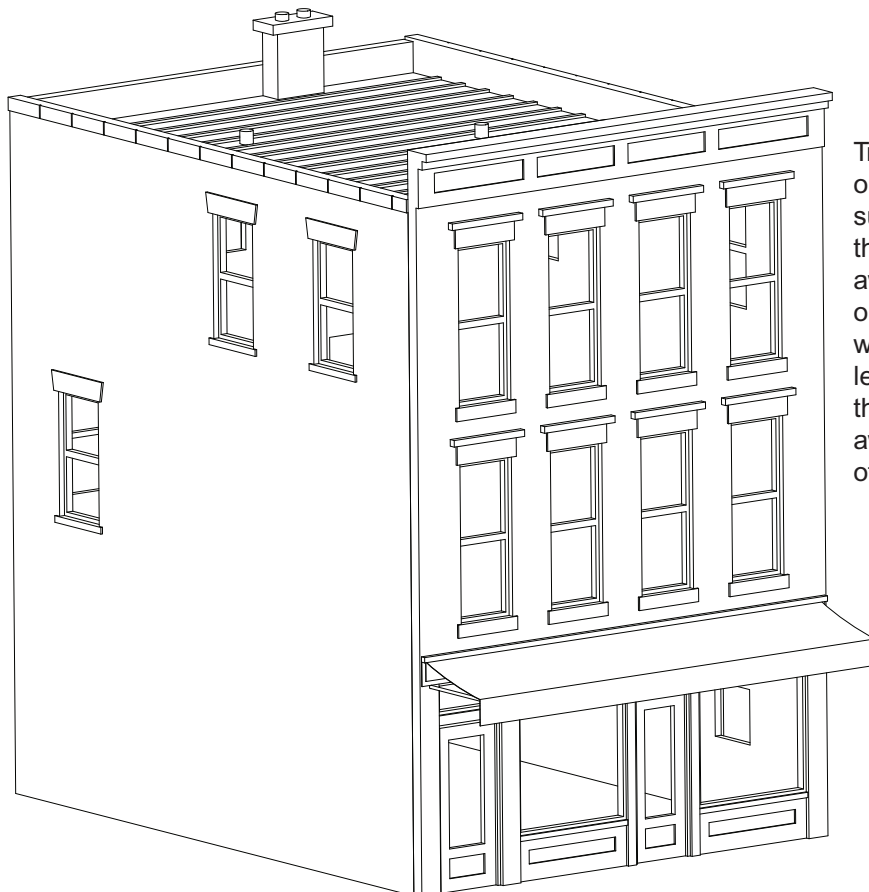
The Awning is installed last because it is delicate. Bend the supplied brass wire using the template to create the Awning Support.

Drill two number 75 holes at the positions indicated on the front wall. Test the fit of the wire, and make adjustments if required, but do not glue the support into position!

Top of Drill Hole should be flush with bottom edge of trim



Drill #75 Hole



Trim out the awning using a sharp knife, and fold on the lines indicated. Add some sag to the top surface by gently bending the awning with your thumbs. Using water based adhesive, glue the awning to the front wall (you can use the box front or the illustration as a guide). When dry, place the wire support into position and glue it in place. The leading edge of the support should be even with the front fold of the awning. You can glue the awning to the wire to also keep it in place. Trim off the excess wire from inside the structure.