



# HO Scale Structure Kit

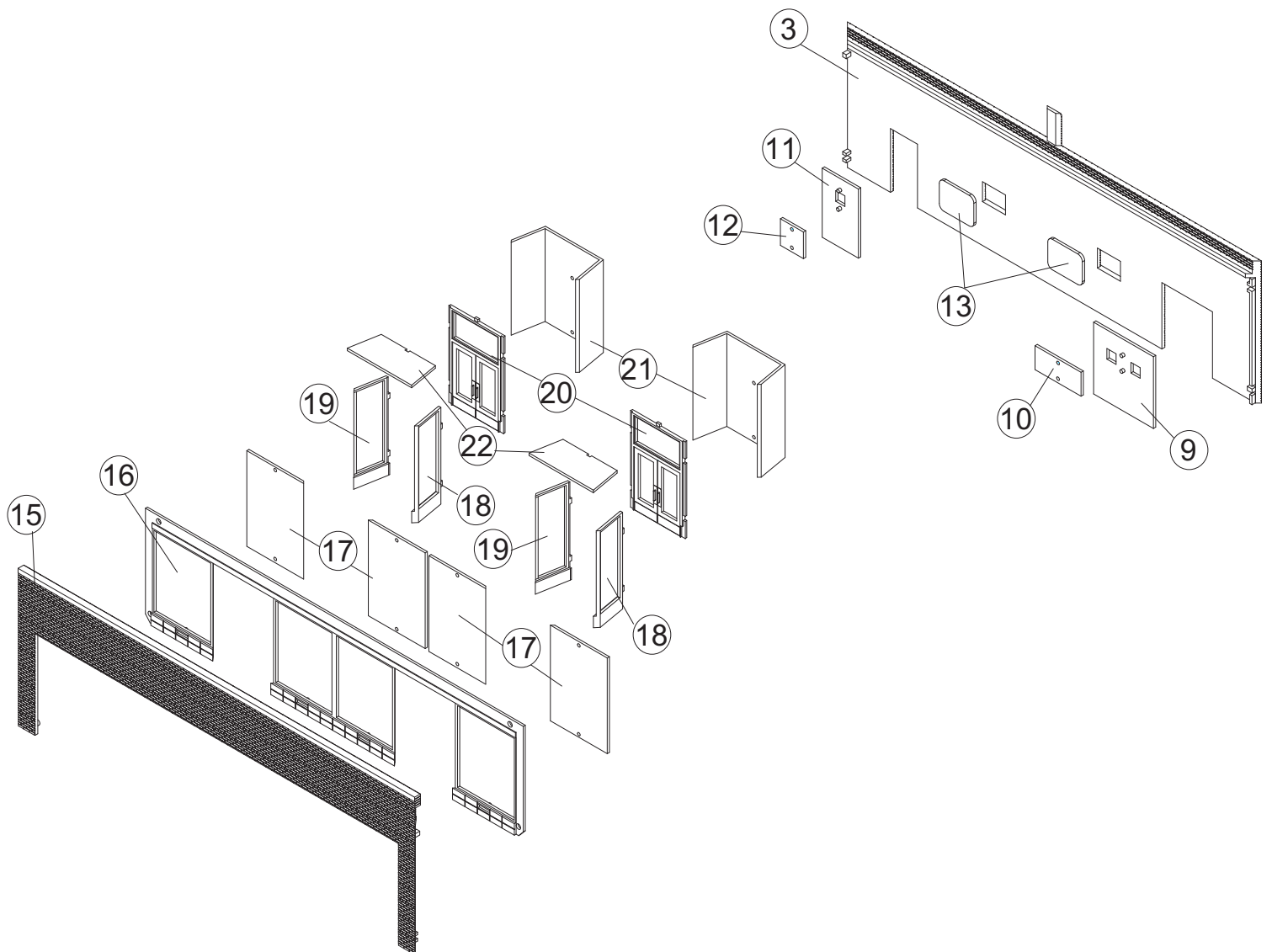
## GLOVER PARK HARDWARE

# 933-3465

Thanks for purchasing this Cornerstone Series® kit. Please read all instructions and study the drawings before starting; directions for the interior graphics are printed directly on that sheet. All parts are styrene plastic, so use compatible glue. If you wish to decorate your model, use paints for plastic models. With appropriate details and signs, your finished model fits almost any era.

We take them for granted now, but screws, nuts and hardware were once worth their weight in gold. Over the centuries, skilled artisans learned to make small objects from metal and began trading them for other things. As the skills and tools needed to work iron developed in medieval times, ironmongers began selling small household articles from their shops. The selection slowly expanded to include tools, various metal fixtures such as hinges, and building materials such as nails. Selling “hard wares” as opposed to “soft goods”, these shops gradually came to be called hardware stores. By the 1800s, westward migration, the industrial revolution and the growth of railroads made the hardware store a fixture in most American towns. Family-owned and operated for generations, many expanded to provide home repair work such as carpentry or plumbing. The rise of chain stores in the 1920s saw the development of national brands, many of which are still going strong today.

1. Glue Window Glass (12, 10) to Door Frames (11, 9). Glue Block Window Glass (13) to Back Wall. Glue Door Assemblies (11, 9) to Back Wall.
2. Glue the Front Wall Window Frame (16) to Front Wall (15). Glue Left Entry Window (19) Door Frame (20) Right Entry Window (18) and Entry Roof (22) together. Glue to Front Window/Front Wall Assembly (15, 16)
3. Before gluing Front Window Glass (17) in place, note that the large opening has a beveled edge - be sure the bevel faces the interior - then glue to Front Window Frame (16). The Entry Window Glass (21) also has a beveled edge - be sure it faces the front wall - then glue to the Front Entry Assembly.



4. Glue the 4 Wall Assemblies (15, 2, 3, 4) to the Roof (14).
5. Glue three Chimney Sides (5, 6, 7) together. Then glue Chimney Assembly to Back Wall (3) to complete the four sides of the Chimney.
6. Glue the Chimney Cap (8) to top of Chimney Assembly.
7. The finished structure can be set on the Base (1) if you wish to add interior details at a later time or, glued in place to complete construction.

