



HO Scale Structure Kit

MAGNOLIA HOTEL

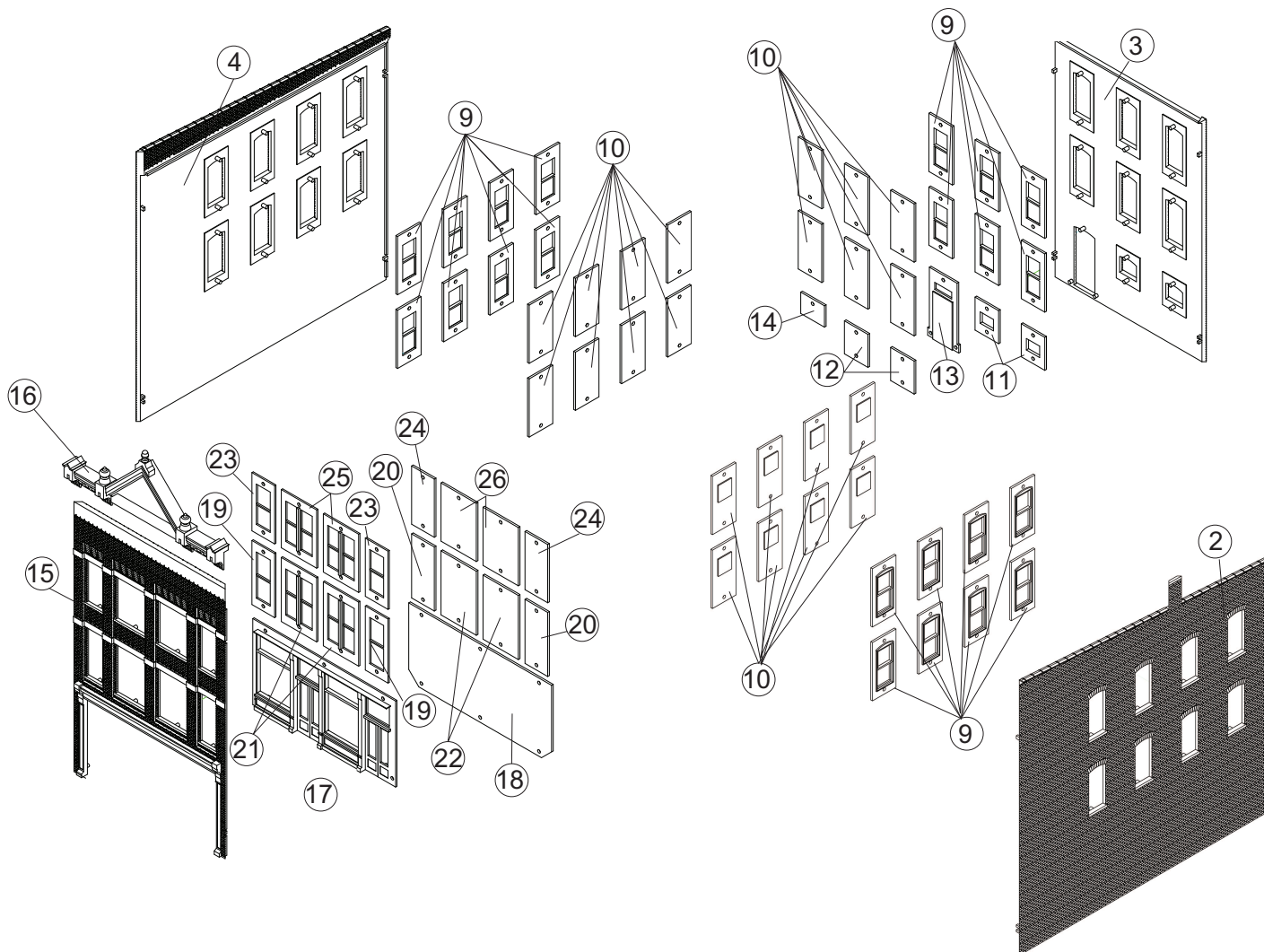
933-3462

Thanks for purchasing this Cornerstone Series® kit. Please read all instructions and study the drawings before starting — directions for the interior graphics are printed directly on that sheet. All parts are styrene plastic, so use compatible glue. If you wish to decorate your model, use paints for plastic models. With appropriate details and signs, your finished model fits almost any era.

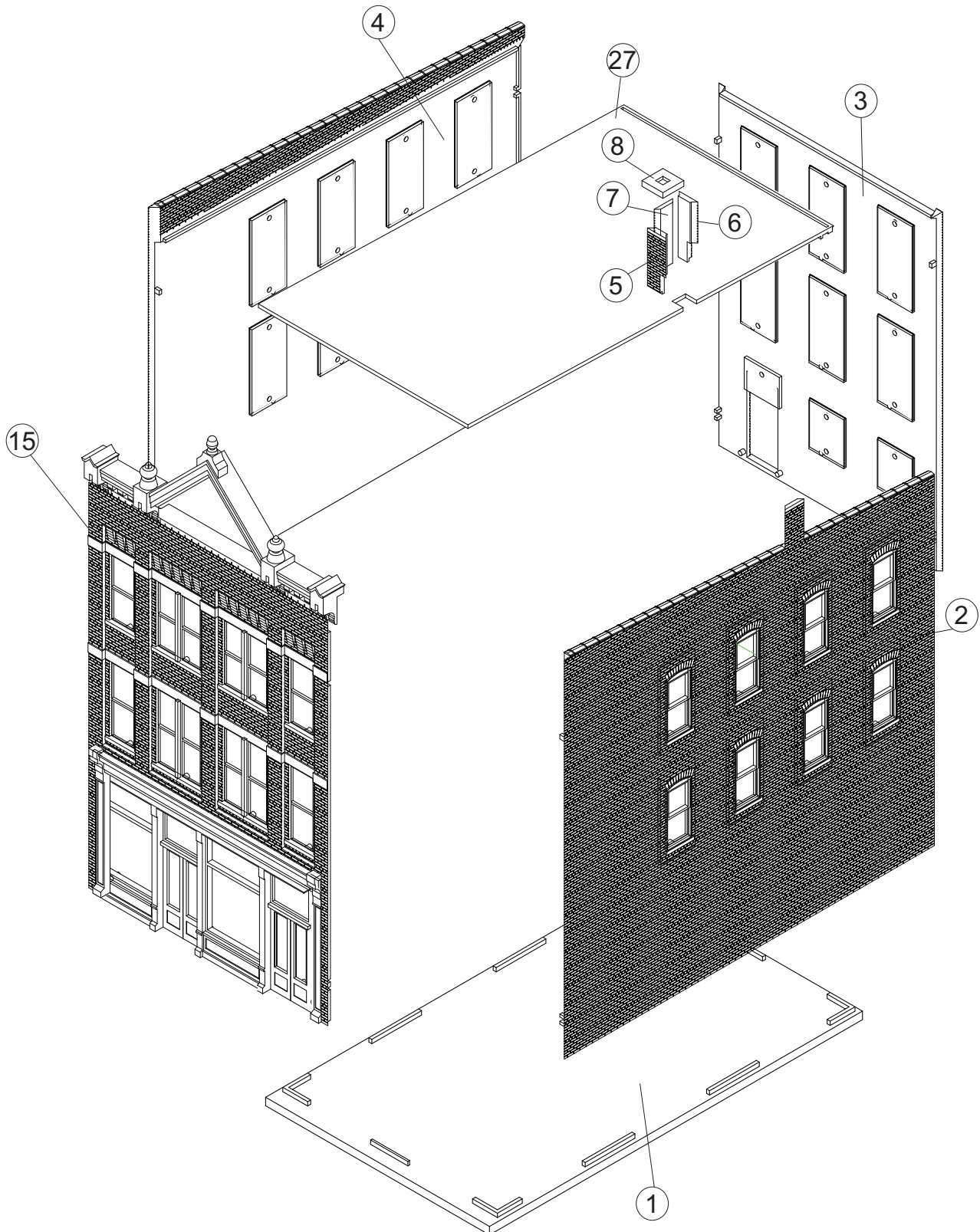
Any up-and-coming town was certain to boast of its hotels. With the coming of settlers, stage lines and railroads, a hotel was among the first commercial buildings constructed in most towns. Typically found in a prominent position on Main Street, many were also built near or next door to the railroad station. And like the depot, hotels were fancy buildings to give guests a good first impression. But as travelers switched from railway to highway, people came to prefer modern motels on newer routes that avoided downtown entirely. As a result, older hotels were converted to rooming houses or apartments while others were remodeled as stores and offices. But here and there, a few survived. Today, many are thriving and continue to offer tourists excellent service and deluxe accommodations in historic surroundings.

For more Cornerstone Series® kits as well as additional details to complete your scene, see your hobby shop, check out the latest Walther's HO Model Railroad Reference Book and our Website at walthers.com.

1. Glue Window and Door Frames to each Wall as shown. Glue Window Glass in place as shown.
2. Carefully trim any flash from the back of the Cornice (16). Glue Cornice (16) to the front top of the Front Wall (15). There is a lip on the back of the Cornice that will sit on top of the Front Wall (15).



3. Glue the 4 Wall Assemblies (15, 2, 3, 4) to the Roof (27).
4. Glue three Chimney Sides (5, 6, 7) together. Then glue Chimney Assembly to Side Wall (2) to complete the four sides of the Chimney.
5. Glue the Chimney Cap (8) to top of Chimney Assembly.
6. The finished structure can be set on the Base (1) if you wish to add interior details at a later time, or glued in place to complete construction.



3. Glue the 4 Wall Assemblies (15, 2, 3, 4) to the Roof (27).
4. Glue three Chimney Sides (5, 6, 7) together. Then glue Chimney Assembly to Side Wall (2) to complete the four sides of the Chimney.
5. Glue the Chimney Cap (8) to top of Chimney Assembly.
6. The finished structure can be set on the Base (1) if you wish to add interior details at a later time, or glued in place to complete construction.

