



# HO Structure Kit

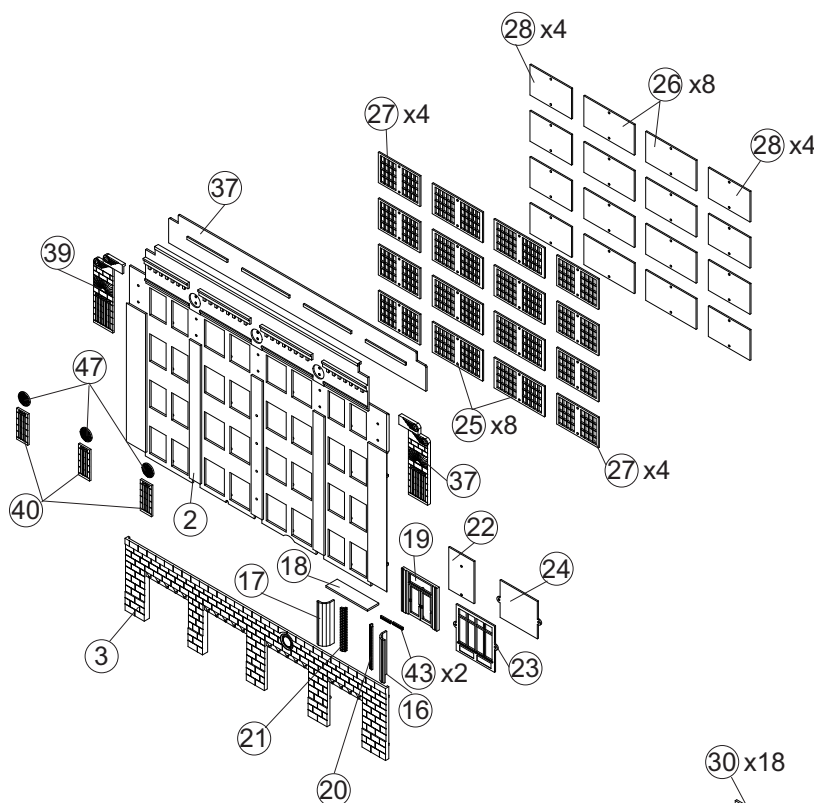
## PARKING GARAGE

933-3769

Thanks for purchasing this Cornerstone kit. All parts are made of styrene plastic, so use compatible glue and paint to assemble and finish your model. PLEASE READ all of the instructions and study the drawings before starting construction. This kit may be built as a background building using grooves molded in the Base (#1), Walls (#4, #5, #44 and #45) and Roof (#7) to simplify cutting.

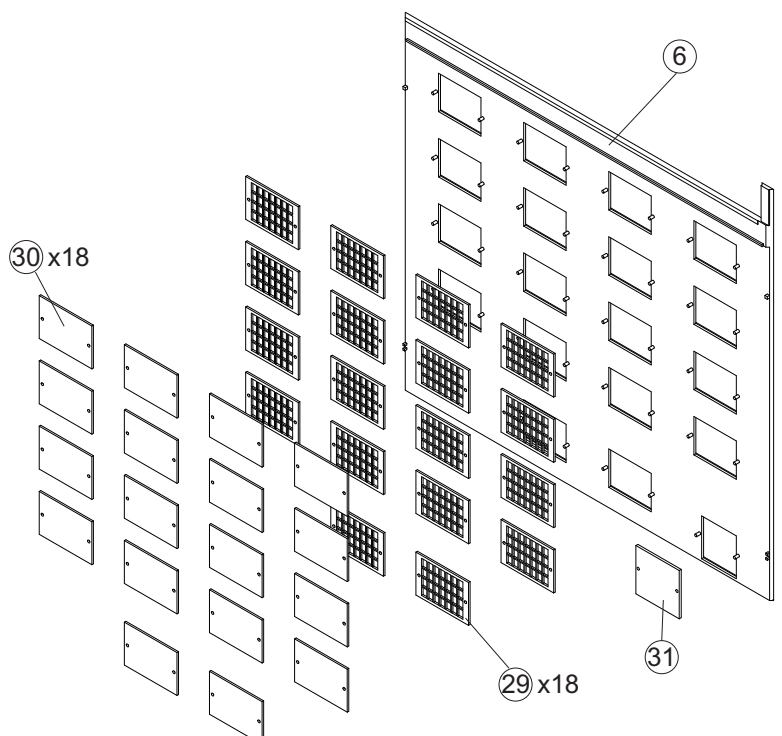
As driving to and from the central business district for work and shopping became common early in the 20th century, so did the problems of finding a parking place. Land was always scarce and expensive in this part of a city, and what was available was usually too small or too far away to be of much good as a parking lot. The ready availability of strong steel beams, concrete and elevators offered a ready solution, and the multi-story parking garage (many other names are used worldwide depending on regional preference or design factors) arrived. In the early days, these facilities borrowed directly from standard architectural designs, including large windows and decorative trim, to blend in easily with their surroundings. Valets took care of parking (navigating one-way ramps, or getting on and off mechanical elevators being too difficult for drivers) and some offered repair services, car washing and more. Many had space on the ground floor for a waiting room, also offering babysitting services, a small soda fountain and similar conveniences for patrons. Close and convenient many of these older facilities remained in use for decades. Perfect as a freestanding city business, your new model is also ideal alongside the Ashmore Hotel (#933-3764), providing parking for guests. Visit your local hobby shop, or check out Walther's HO Reference Book and [walthercornerstone.com](http://walthercornerstone.com) for vehicles and figures from your modeling era to finish the scene.

For more Cornerstone Series® kits as well as additional details to complete your scene, see your hobby shop, check out the latest Walther's HO Model Railroad Reference Book and our Website at [walthercornerstone.com](http://walthercornerstone.com).



1. Glue the inner front wall #37 to the back of wall #2. Glue "stone" trim parts #38, 39, 40, and 41 to the front of wall #2. At this time you may wish to apply the printed details and signs to the lower front wall #3 using white glue or water-based contact cement. Glue lower front wall #3 to the bottom tabs of wall #2. Glue windows #25 and #27 to wall #2, and then add clear parts #26 and #28. Glue the ground floor window #23 to wall #3, and then glue the clear part #24 in place. Before assembling the entryway below the clock on wall #3, note the notch on one edge of parts #16 and 17: this notched edge goes against the back inner corner of this opening. Carefully remove any sprue

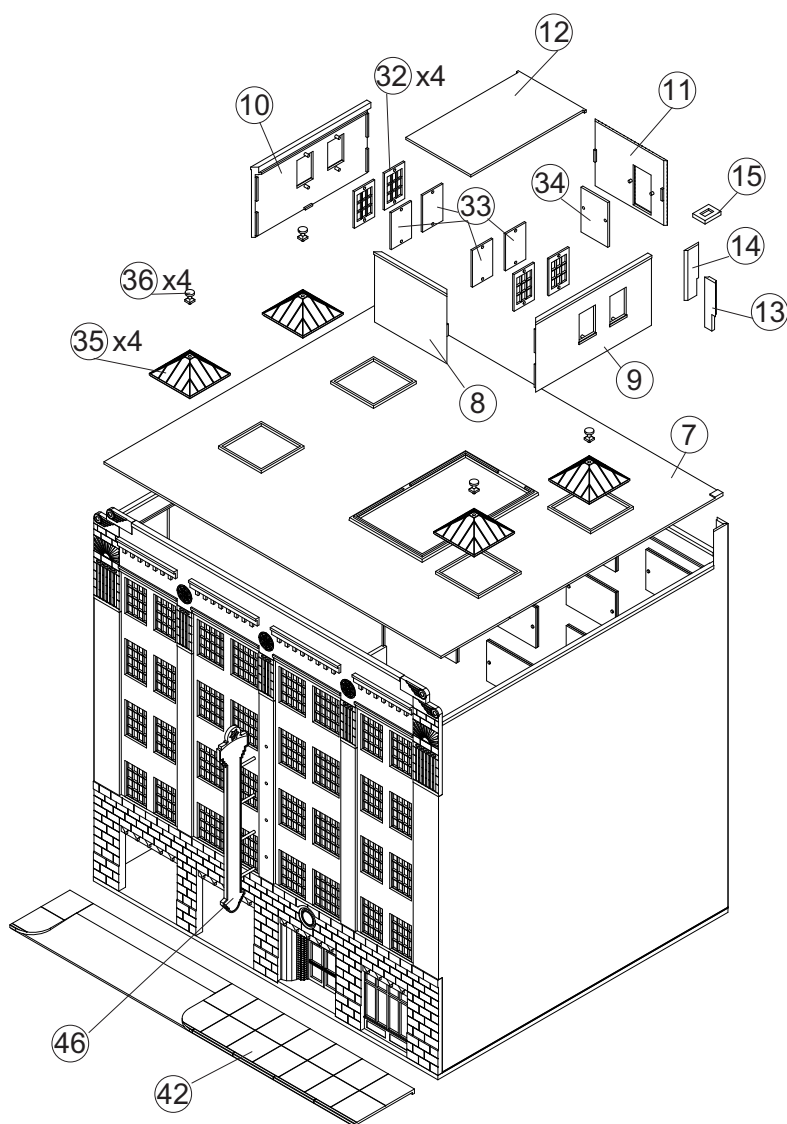
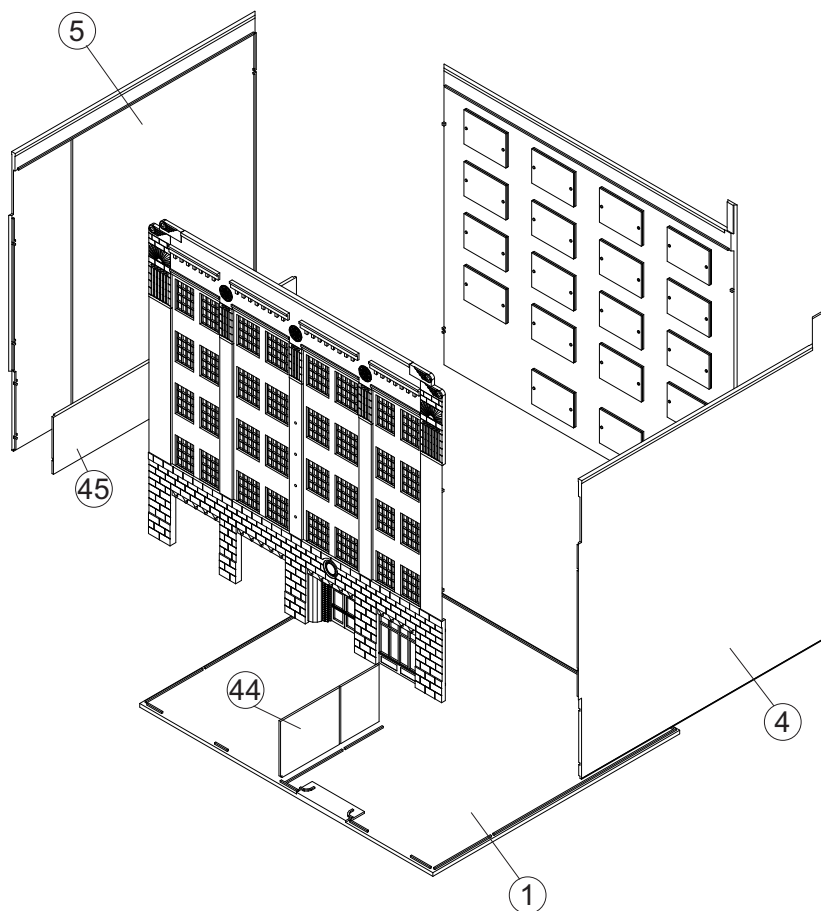
material and test fit #16 and #17 so they are tight to the top of the opening, then glue in place. Glue door handles #43 on entry door #19. Align slots on entry door #19 with parts #16 and #17, when #19 is even with the bottoms, glue in place. Make sure the pegs on entry roof #18 are at the back, and glue in place to the entry sides and door. Look carefully at the ends of side glass #20 and 21 – note that one "bend" is sharper than the other — the sharper bend installs closest to the door. Use glue sparingly to attach #20 and #21 to the door entryway sides. Glue door glass #22 in place.



2. Glue the back door #31 and the back windows #29 in place on wall #6. Then glue the clear parts #30 in place.

3. Glue front wall assembly and walls #4, #5 and #6 to base #1. Glue short inner wall #44 to the left of the ridges on the back of parts #1 and #3. Glue the long inner wall #45 to part #5.

4. For a removable roof, simply set #7 in place on the locating ridges, or glue in place as desired. Glue chimney sides #13 and #14 together and to walls #4 and #6, then glue cap #15 in place. Glue door #34 to wall #11, and windows #32 to walls #9 and #10. Then glue clear parts #33 in place. Glue walls #8, #9, #10 and #11 together and to the main roof. Glue small roof #12 in place. Glue skylights #35 in place and glue vents #36 to skylights. Glue sidewalk #42 to base #1. Using a sharp hobby knife, cut out the printed signs making sure they fit within the raised edges of the large sign #46. Using white glue or water-based contact cement, apply the graphics to the sign. Glue sign into holes in wall #2.



## DECALING

1. After cutting out the decal, dip in water for 10 seconds, remove and let stand for 1 minute. Slide decal onto surface, position and then blot off any excess water.
2. Lightly brush Micro Sol® on top. This will soften the decal allowing it to conform to irregular surfaces. DO NOT TOUCH DECAL while wet!
3. When the decal is thoroughly dry, check for any trapped air bubbles. Prick them with the point of a small pin or hobby knife blade and apply more Micro Sol®.