



HO Structure Kit **PELLA DEPOT** 933-4054

Thanks for purchasing this Cornerstone kit. All plastic parts are styrene, so use compatible paint and glue to assemble and finish your model. Please study the drawings and read these instructions before starting construction. PLEASE NOTE: If you wish to paint your model, do so before starting construction. Brickwork should be a mix of natural "earth" colors, which varied depending on local suppliers or the railroad's preferences. All wooden items such as trim, brackets, windows and doors would be finished in the company's standard paint color for buildings used by the public.

For much of the 19th and 20th centuries, the depot was the most important building in any town. Local residents, businessmen and politicians clearly understood the impression "their" depot made on visitors and were never shy about asking the railroad to provide the best possible building. As a result, larger, busier towns generating more business, cities served by more than one railroad, or those of greater importance such as a county seat, often received custom-designed and built stations. More elaborately trimmed and often made of brick or stone, facilities of this type were typically built only to serve passengers, with separate waiting rooms for men and women. A small area inside or separate building nearby was provided to secure checked baggage, but all of the express business was handled at a separate freight house, delivered by wagon or truck to the station for direct transfer at train time. Railroads tried to locate these stations in or near the central business district, providing easy access to and from the busiest part of town. Many also occupied a fairly large area, which given their high visibility and need to maintain goodwill with the public, was often transformed into an elaborate park-like setting, complete with flowerbeds, statuary, fountains and walkways. Many depots began their slow decline during the 1920s when passengers first began heading for the highways. In the years after WWII many railroads were obliged by local politicians to keep running trains, and stations remained open, if only for an hour or so when trains were due. As a result, many city stations were among the last to be closed. Many went on to other uses, including the prototype of your new model. Built by the Rock Island in 1908, this handsome brick station is still standing at the corner of Main and Oskaloosa Streets in Pella, Iowa, and is on the National Register of Historic Places. Although rail service is long-gone, the structure has been carefully maintained and is now used as a museum. Similar stations were constructed by many railroads during the 19th and early 20th centuries, and your new model will be right at home in any bustling smaller city, town or suburb along your railroad. Visit your local hobby shop; see the latest Walther's HO Model Railroad Reference Book or log onto walthers.com for more ideas to complete your new model.

DOORS & WINDOWS

Glue Windows and Doors to the inside of each Wall as shown. To install Window Glass simply slip over mounting pins molded on the back of each wall. Insert pins on Roof Brackets to mounting points in front of each wall and glue from inside. PLEASE NOTE: If desired, add the printed-paper window shades and stained glass panels before gluing Walls to Base. Cut printed details from sheet and attach to back of "glass" with a small piece of tape or white glue.

Main Building:

Small Front Wall (2): Entry Door (14); Single Window (11); Single Window Glass (28); Roof Bracket (2x 16); Door Transom Glass (31)

Large Front Wall (6): Entry Door (14); Baggage Door (15); Single Window (11), Single Window Glass (28); Door Transom Glass (31); Roof Brackets (3x 16)

Baggage Room End Wall (7): Horizontal Window (13); Horizontal Window Glass (32); Roof Bracket (2x 16)

Back Wall (8): Double Window (3x 10); Double Window Glass (3x 29); Roof Bracket (5x 16)

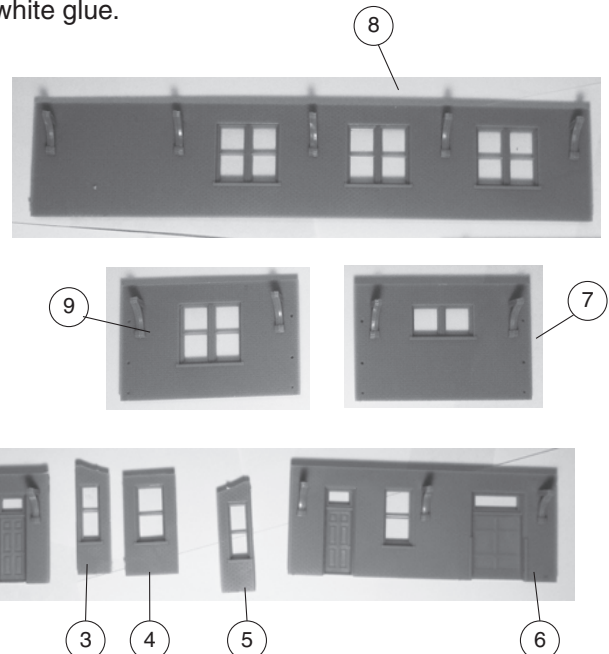
Waiting Room End Wall (9): Double Window (10); Double Window Glass (29); Roof Bracket (2x 16)

Operator's Bay:

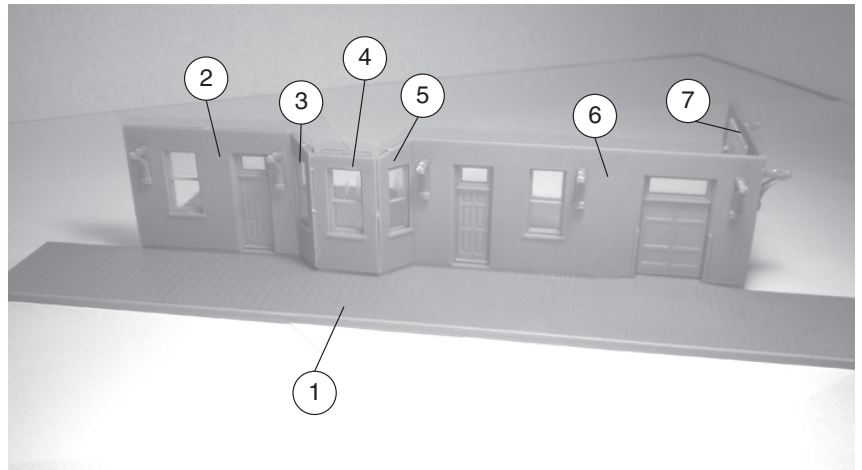
Left Bay Wall (3): Small Window (12); Small Window Glass (30)

Front Bay Wall (4): Single Window (11); Single Window Glass (28)

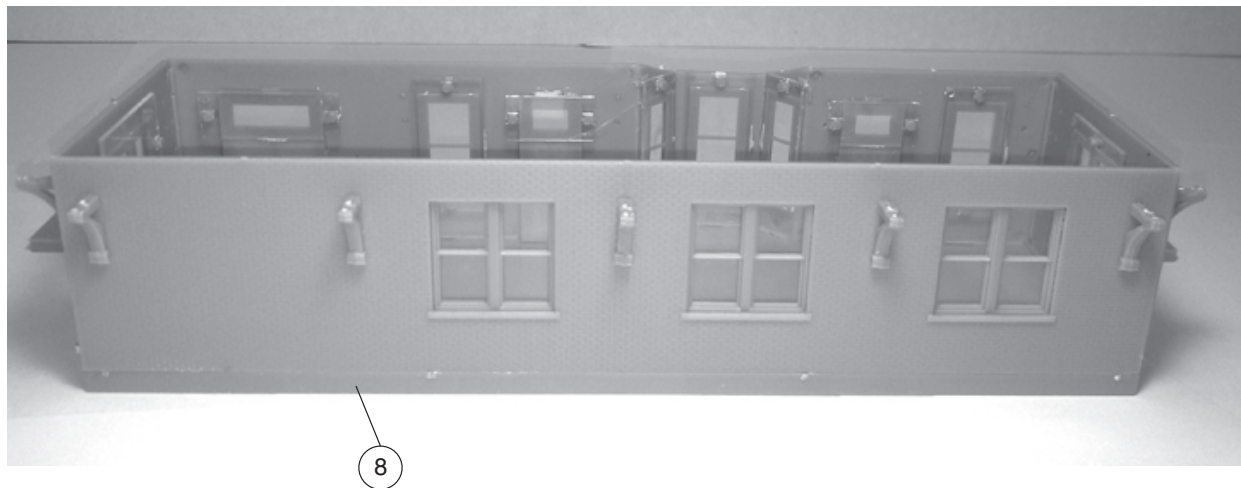
Right Bay Wall (5): Small Window (12); Small Window Glass (30)



1) Note the platform is the front of the Base (1). Assemble the front wall on the raised portion of the Base. Using the ridges on the Base as a guide, work from left to right and glue Walls (2, 3, 4, 5, 6) on Base as shown.

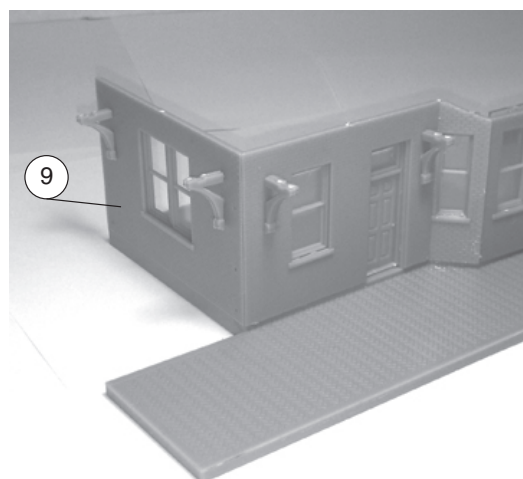


2) PLEASE NOTE: Be sure the window ledges of both End Walls are at the bottom. Using the ridges on the Base as a guide, glue Baggage Room End Wall (7) to the right side of the Base and to Large Front Wall at inside corner.



3) PLEASE NOTE: Be sure the window ledges are at the bottom. Using the ridges on the Base as a guide, glue Back Wall (8) to Base and to Baggage Room End Wall at inside corner.

4) Using the ridges on the Base as a guide, glue Waiting Room End Wall (9) to left side of Base and to Back Wall at inside corner.



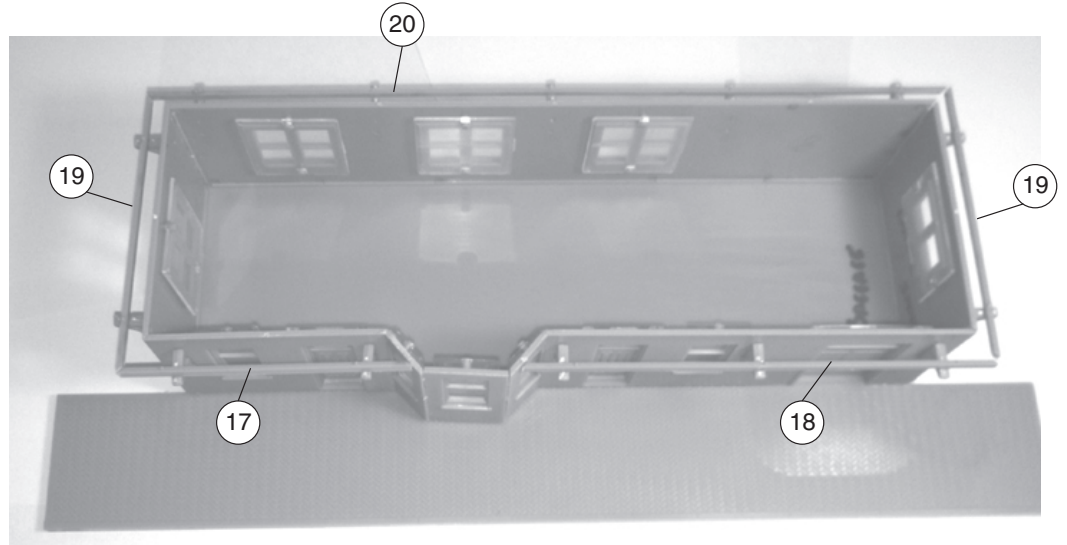
Roof Supports

PLEASE NOTE: Install all Roof Supports (17, 18, 2x 19, 20) with pins on top edge facing upward. The lower edge (no pins) is glued into the notches in each Roof Bracket (16).

5) Glue Back Roof Support (20) to Roof Brackets on Back Wall.

6) Glue End Roof Supports (2x 19) to Roof Brackets on Baggage Room End Wall (7) and Waiting Room End Wall (9).

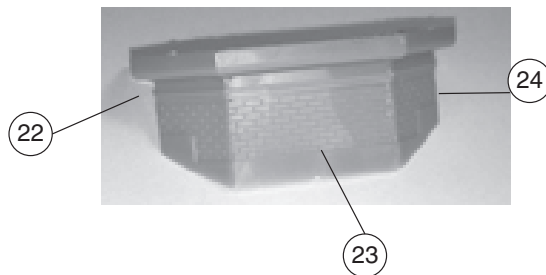
7) PLEASE NOTE: Roof Supports on front walls should touch left and right side of bay window as shown. Glue Left Front Roof Support (17) to Roof Brackets in Small Front Wall (2). Glue Right Front Roof Support (18) to Roof Brackets in Large Front Wall (6).

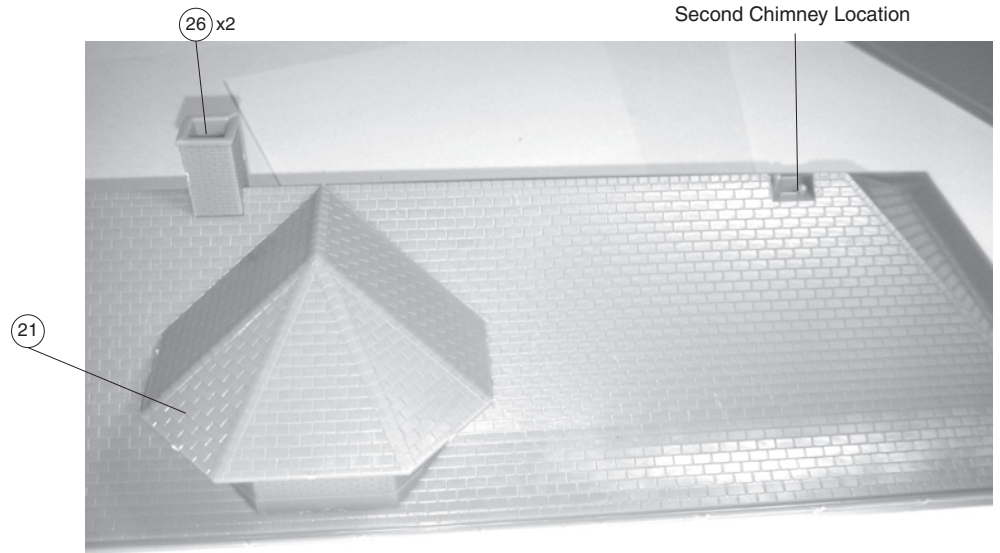


Roof

8) Glue Dormer Right (22) and Left Sides (24) to Dormer Front (23).

9) Using the raised ridges on the Roof (25) as a guide, glue Dormer assembly to Roof. Glue Dormer Roof (21) to Dormer.

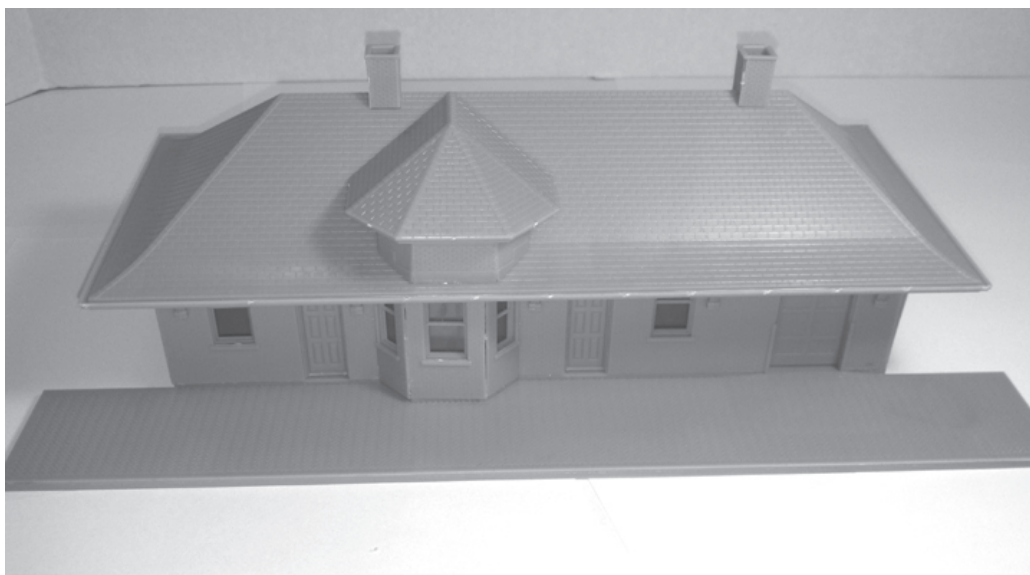
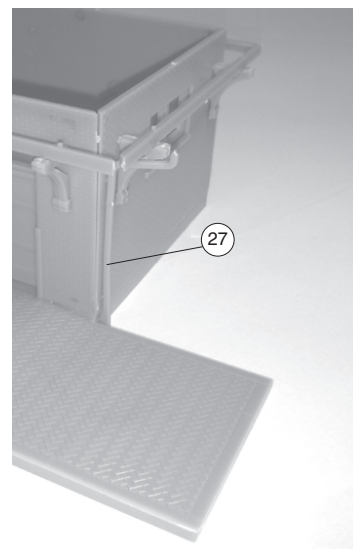




10) Make two Chimneys by gluing Chimney Halves (4x 26: 2 per chimney) together. Glue to mounting points in Roof.

13) Note the three downspout mounting holes on the outside right and left corners of each End Wall. Insert Downspouts (4x 27: 2 per end wall) and glue from inside.

14) Place completed Roof on completed wall assembly; the Roof may be set in place if you wish to add lighting or interior details (sold separately), or glued in place.



Station Sign

Printed-paper signs are included to match the style used at Pella, which were mounted on the lower edge of the bell roof. Cut the signs from the sheet and glue to a small piece of thin styrene (not included) with white glue. When dry, trim to size. Center and glue in place as desired.