



HO Structure Kit

RIVER ROAD MERCANTILE

933-3650

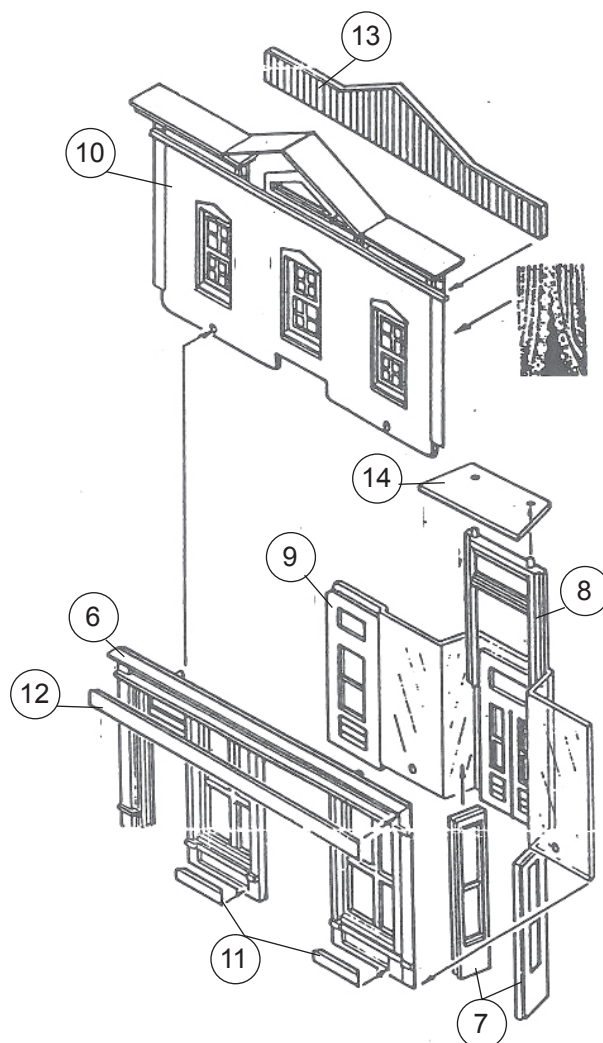
Thanks for purchasing this Cornerstone® kit. Please read these instructions and study the drawings before starting. PLEASE NOTE: All plastic parts are made of styrene, and most will simply snap in place. Some may require gluing as noted in the instructions, using cement made for styrene (sold separately). For a more permanent and sturdy structure you can also glue all parts together at the snap fit locations. Doors and Windows are molded as complete subassemblies with "glass" already in place, and windows can be detailed with the printed curtains, and/or the unique window lighting kit, both included with your new model. If you wish to paint any parts, do so before starting construction using plastic-compatible paints.

In an age when most American's lived a full day or more from the nearest town, the local Mercantile was often their immediate source of supplies. Carrying a wide range of basic hardware, food items and essentials for daily living, they were typically found in small hamlets or by themselves at road junctions. Some were later constructed alongside a railroad spur or branchline to handle freight shipments for local farmers, and often served as the post office and town hall as well. As roads improved and more people owned cars, some owners added gas pumps and garages, or small food stands. Most began to close by the late 1950s, but some still survive today, remodeled as private residences or storage buildings. See your local hobby dealer, check out the current Walthers Model Railroad Reference Book or visit us online at walthers.com for additional figures, scenery materials, vehicles and other details to complete your new model.

PLEASE NOTE: Before completing each wall assembly, you may wish to add the printed-paper curtains and/or interior lighting (as shown on the Lighting instruction sheet). If desired, trim Printed Curtains from sheet and attach to the back of the "glass" on any window with a small piece of tape or white glue.

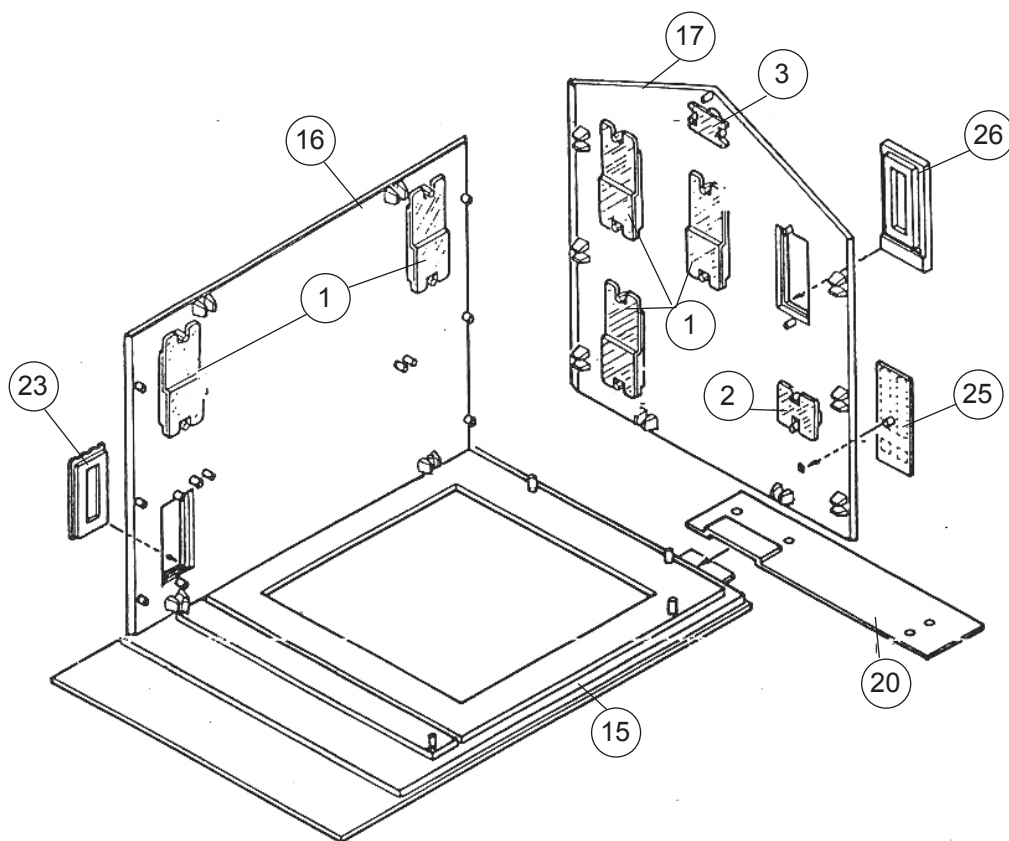
1) Insert Front Panel (13) and Windows (3x 1) in back of Upper Front Wall (10).

2) Insert Front Entry Doorway (8) to Lower Front Wall Glass (9). Insert Side Entry Windows (2x 7) to Lower Front Wall Glass. Insert Entry Ceiling (14) to Front Entry Doorway. PLEASE NOTE: Glue Signboard (12) and Window Trim Panels (2x 11) to Lower Front Wall (6). When dry, insert completed Lower Wall Glass in Lower Front Wall. Insert completed Upper Front in Lower Front Wall.



Applying Decals

1. Cut out the decal and dip in water for 10 seconds. Remove decal from water and let stand for 1 minute. Slide decal onto surface and into position. Blot off any excess water.
2. Lightly brush Micro Sol® on top of the decal. This will soften the decal allowing it to conform to any irregular surfaces. DO NOT TOUCH DECAL while wet!
3. When the decal is thoroughly dry, check for any trapped air bubbles. Prick them with the point of a small pin or hobby knife blade and apply more Micro Sol®.



3) PLEASE NOTE: Glue Stair Landing (20) to Base (15). A Boarded-Up Window (23) is provided that can be used in any window opening on any wall if desired; if used, glue in place. Insert Windows (2x 1) in back of Left Side Wall (16). Insert completed Left Side Wall in Base.

4) Insert Windows (3x 1) in back of Rear Wall (17). Insert Attic Window (3) as shown. Insert Lower Rear Door (25) in Rear Wall. PLEASE NOTE: Glue Upper Rear Door (26) to Rear Wall. Insert completed Rear Side Wall in Base and to Left Side Wall as shown.

5) Insert Windows (3x 1) in back of Right Side Wall (13). Insert completed Right Side Wall in Base and to Front and Rear Walls as shown. Insert Stairs (19) in Stair Landing.

6) PLEASE NOTE: Glue Cornices (21, 22) to rear of Roof (18) as shown. Glue Chimney (24) to Roof as shown. When dry, snap completed Roof assembly to completed Wall assembly.

