



HO Structure Kit SMITH'S GENERAL STORE 933-3653

Thanks for purchasing this Cornerstone® kit. Please read these instructions and study the drawings before starting. PLEASE NOTE: All plastic parts are made of styrene, and most will simply snap in place. Some may require gluing as noted in the instructions, using cement made for styrene (sold separately). For a more permanent and sturdy structure you can also glue all parts together at the snap fit locations. Walls and Windows are molded as complete subassemblies with "glass" already in place, and windows can be detailed with the printed curtains, and/or the unique window lighting kit, both included with your new model. If you wish to paint any parts, do so before starting construction using plastic-compatible paints.

Once found in business districts large and small, the general store was an important stop on your weekly shopping trip. Here you could purchase a full range of general merchandise (which is why they were called "general stores") including bulk items such as coffee, flour, pickles and other grocery staples, along with preserved meats and canned goods. Locally grown fruits and vegetables were offered in season, along with dairy products from local farms or suppliers. The store also carried all types of ready-made household items such as bolts of cloth, work clothes, china, glassware, oil lamps, kerosene (many later sold "gas-olene" in five-gallon cans before most towns had a filling station), and similar products. Especially common in rural areas, the stores carried an even wider selection of products as most were a substantial distance from the nearest "big town," and often served as the local post office. Mail order catalogs, better roads and improved automobiles started a slow decline for general stores, but some still survive as tourist attractions or have been remodeled as private homes and other businesses. See your local hobby dealer, check out the current Walthers Model Railroad Reference Book or visit us online at walthers.com for additional figures, scenery materials, vehicles and other details to complete your new model.

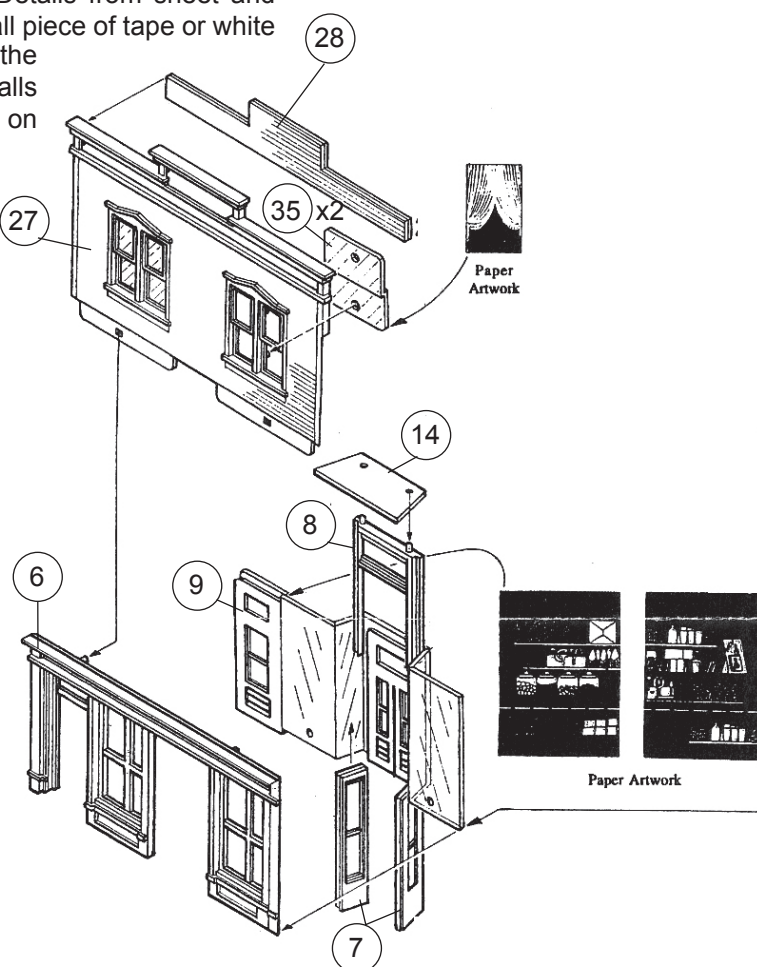
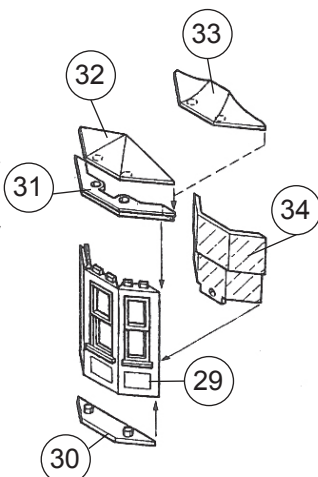
PLEASE NOTE: Before completing each wall assembly, you may wish to add the printed-paper curtains, details, and/or interior lighting (as shown on the Lighting instruction sheet). If desired, trim Printed Curtains and Details from sheet and attach to the back of the "glass" on any window with a small piece of tape or white glue. If desired, the Bay Window may be glued over one of the Double Windows on the Upper Front Wall. Both Side Walls (16) are identical and the exterior stairway can be installed on either the left or right of the structure.

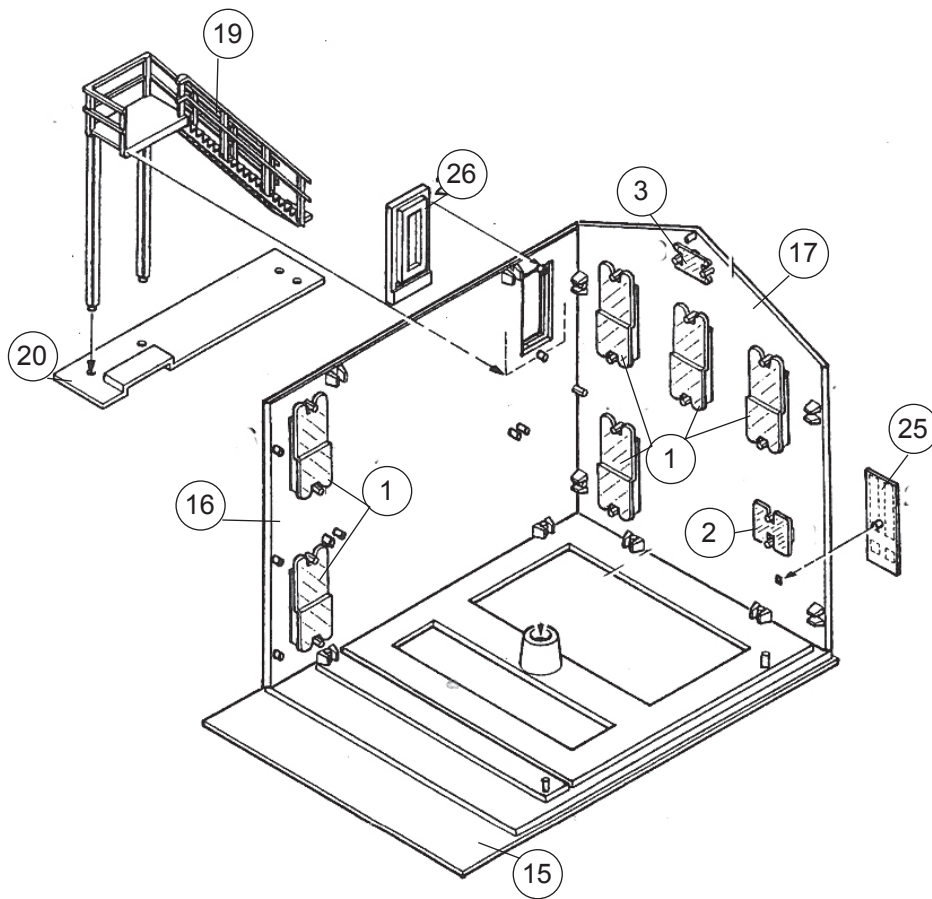
1) Insert Front Panel (28) to Upper Front Wall (27). Note the correct placement and insert Double Window Glass (2x 35) to back of each Double Window.

2) Insert Front Entry Doorway (8) to Lower Front Wall Glass (9). Insert Side Entry Windows (2x 7) to Lower Front Wall Glass. Insert Entry Ceiling (14) to Front Entry Doorway. Insert completed Lower Wall Glass in Lower Front Wall. Insert completed Upper Front Wall in Lower Front Wall. Insert completed Front Wall in Base (15).

Optional Front Wall Bay Window:

Insert Bay Window Floor (30) in Bay Window (29). Insert Bay Window Glass (34) in Bay Window. Two styles of Bay Window Roofs are provided (32, 33): insert a Bay Window Roof in the Upper Bay Window Frame (31) and insert completed Roof to completed Bay Window. PLEASE NOTE: Glue the Bay Window over one of the Double Windows on the Upper Front Wall.





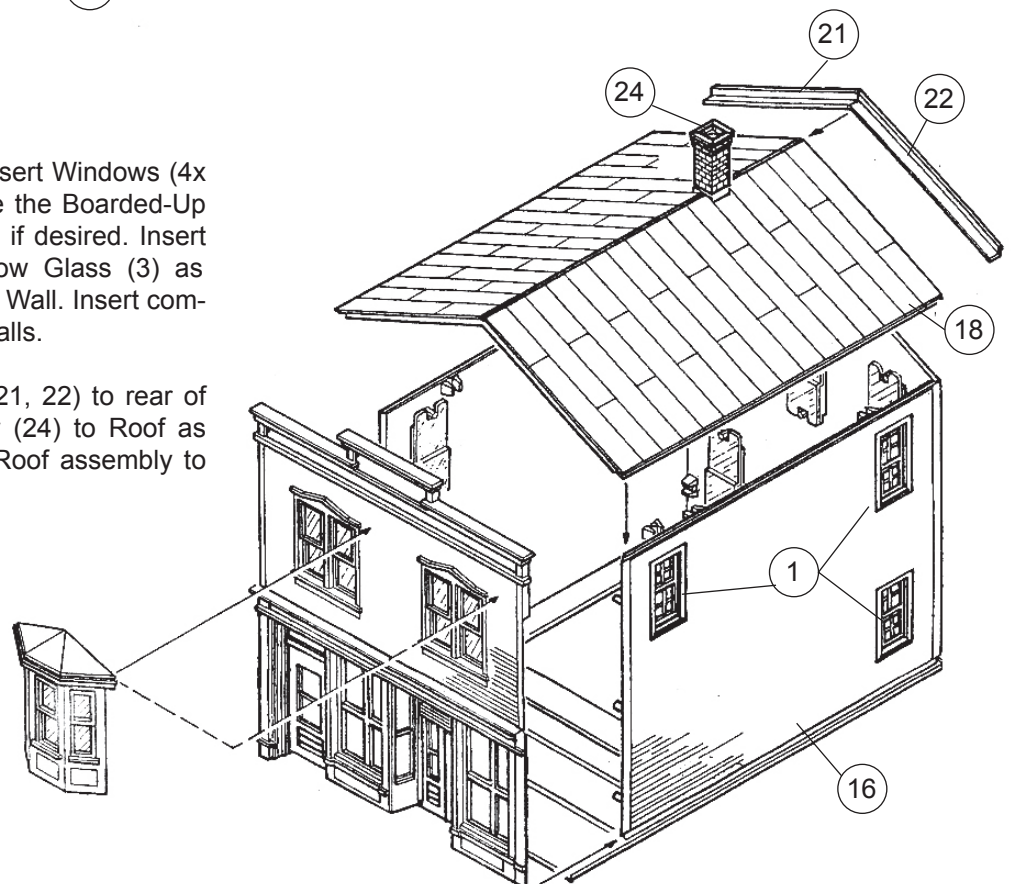
3) PLEASE NOTE: Side Walls (2x 16) are identical. If desired, you can build your model with an Exterior Stairway on the left or right side, or with standard Windows. Note the correct placement and insert Windows (1) to back of each Side Wall; you'll use five windows if you install the upstairs door, and an optional Boarded-Up Window (23) is provided that can be used in any window opening; if used, glue in place. Insert completed Side Walls in Base and Front Wall.

Optional Upstairs Door & Stairs:

Make sure the door faces correctly (doorknob to your right, no trim at bottom) and glue Door (26) to an upper window opening in a Side Wall: the instructions and box photo show the Door at the rear of the left side. Insert Exterior Stairs (19) in Stair Landing (20). Align the open platform in the stairway with the Door, and glue completed Stair Landing to Base (15).

4) Note the correct placement and insert Windows (4x 1) to back of Rear Wall (17), or glue the Boarded-Up Window (23) in any window opening if desired. Insert Transom Glass (2) and Attic Window Glass (3) as shown. Insert Rear Door (26) in Rear Wall. Insert completed Rear Wall in Base and Side Walls.

5) PLEASE NOTE: Glue Cornices (21, 22) to rear of Roof (18) as shown. Glue Chimney (24) to Roof as shown. When dry, snap completed Roof assembly to completed Wall assembly.



Applying Decals

1. Cut out the decal and dip in water for 10 seconds. Remove decal from water and let stand for 1 minute. Slide decal onto surface and into position. Blot off any excess water.
2. Lightly brush Micro Sol® on top of the decal. This will soften the decal allowing it to conform to any irregular surfaces. DO NOT TOUCH DECAL while wet!
3. When the decal is thoroughly dry, check for any trapped air bubbles. Prick them with the point of a small pin or hobby knife blade and apply more Micro Sol®.